

# PRODUCT CATALOG

facade paints



wood stains and varnishes



interior paints



paints for metal and wood



**BARVY A LAKY  
TELURIA®**



PRODUCT		USE					
		wood	metal	concrete masonry	adhesive	painting	special coatings
04-17	LAZUROL	✓					✓
18-21	PRAGOPRIMER	✓	✓	✓			
22-27	INDUSTROL	✓	✓	✓			
28-29	RADBAL		✓				
30-34	HOSTAGRUND		✓				
35-36	FEST-B		✓				
37-38	FORMEX		✓				
39-42	EPOLEX	✓	✓	✓			✓
43-44	BETEX			✓			✓
45-46	UNIBAL	✓					
47-52	ŘEDIDLA						
53-67	REMAL			✓		✓	✓
68-70	LATEX	✓		✓		✓	
71-81	BARLET			✓		✓	
82-88	BAKRYLEX	✓	✓	✓			
89-91	UNIFLEX				✓		
92-93	APEKO				✓		
94-95	SOICRAT	✓		✓			✓
96-101	OTHER PRODUCTS						✓
102	REMARKS						

THE SHADES USED IN THE CATALOG ARE ONLY APPROXIMATE.

## PICTOGRAMS



brush



roller



spraying



soaking wood



dipping metal



trowel



toothed spatula



tinting



sponge





# LAZUROL

IMPREGNATING PRIMERS, WOOD  
STAINS, VARNISHES, OILS  
AND ENAMELS



# LAZUROL

# UNIVERZÁLNÍ LAK

## S 1002 | VARNISH ENHANCES BEAUTY OF WOOD



0000  
gloss

0001  
matt

### PACK SIZES

0,75 l

4 l

9 l

### COVERAGE (m<sup>2</sup>/l)

14 - 17

### USE

INTERIOR

EXTERIOR

### APPLICATION



### PRODUCT:

The universal solvent-based varnish gloss or matt has excellent durability and spreading rate. It is suitable for transparent coating of wood and metal, both interior and exterior, especially: wooden wall panelling and ceilings, wood-fibre boards, wooden and metal banisters. It creates decorative and protective finish.

### SURFACE PREPARATION:

Wood has to be cleaned, dried with humidity max 12 %. Excessive resin (larch and pine) has to be stripped by thinner C 6000. Sand in grain direction and dust off. Quality and durability of coat depends on wood treatment. For best results wood penetrates to unify absorbency, better protection, in case of fungicidal impregnation against mould, fungi and insects. Sand by fine sandpaper, dust off.

Metal has to be clean, dry, and free of grease, rust and dust.

Poorly adhering old coat removes to the solid surface.

### THINNER S 6006 for cleaning tools

### RECOMMENDED APPLICATION:

Mix properly before use. It shouldn't be thinned, it is ready to use.

Metal: Apply 2 - 3 coats of varnish LAZUROL UNIVERSAL VARNISH S 1002, 24 hours between coats.

Wood: Apply 1 coat of impregnating wood stain LAZUROL CLASSIC S 1023, for exterior LAZUROL FUNGICIDAL PENETRATION S 1033. Then apply 1 - 2 coats of varnish LAZUROL UNIVERSAL VARNISH S 1002, 24 hours between coats.

The optimal film thickness of one coat is 25-30 µm.

# LAZUROL

# VENKOVNÍ POCHOZÍ LAK

## S 1020 | FLOOR VARNISH



0000  
colorless

### PACK SIZES

0,75 l

2,5 l

4 l

### COVERAGE (m<sup>2</sup>/l)

10 - 12

### USE

INTERIOR

EXTERIOR

### APPLICATION



### PRODUCT:

The hard-wearing single pack solvent-based varnish is designed for transparent semi-matt coating of wood, chipboards and cork in interior and exterior, especially: parquets, wooden floors, wooden wall panelling, stairways, doors and banisters. Decorative and high durable finish has excellent weather protection.

### SURFACE PREPARATION:

Wood has to be cleaned, dried with humidity max 12 %. Excessive resin (larch and pine) has to be stripped by thinner C 6000. Sand in grain direction and dust off. Quality and durability of coat depends on wood treatment. For best results wood penetrates to unify absorbency, better protection, in case of fungicidal impregnation against mould, fungi and insects. Sand by fine sandpaper, dust off and apply varnish.

Poorly adhering old coat removes to the solid surface.

### THINNER S 6006 for cleaning tools

### RECOMMENDED APPLICATION:

Mix properly before use. It shouldn't be thinned, it is ready to use.

Interior: Apply 1 coat of impregnating transparent wood stain LAZUROL CLASSIC S 1023. The surface wipes off with a dry brush after 20 minutes and sands after drying (24 hours). Apply 2 - 3 coats of LAZUROL FLOOR VARNISH S 1020 in interval 16 - 24 hours between coats.

Exterior: Apply 1 coat of LAZUROL FUNGICIDAL PENETRATION S 1033 or LAZUROL FUNGI. The surface wipes off with a dry brush after 20 minutes and sands after drying (24 hours). Apply 3 coats of LAZUROL FLOOR VARNISH S 1020 in interval 16 - 24 hours between coats.

The number of coats and wood structure affects colour shade.



# LAZUROL LAK S VČELÍM VOSKEM

## S 1022 | VARNISH WITH BEE WAX

### PRODUCT:

The solvent-based transparent varnish protects soft and hardwood in interior, especially: plank wood, timber ceiling, furniture and garden furniture. The varnish with wax enhances natural beauty of wood, is water-resistant and the surface remains permeable. It deeply penetrates and renovation is easy. Exterior wood treats by fungicidal impregnation before coating.

### SURFACE PREPARATION:

Wood has to be cleaned, dried with humidity max 12 %. Excessive resin (larch and pine) has to be stripped by thinner C 6000. Sand in grain direction and dust off. Quality and durability of coat depends on wood treatment. Poorly adhering old coat removes to the solid surface.

### THINNER S 6006 for cleaning tools

### RECOMMENDED APPLICATION:

Mix properly before use. It shouldn't be thinned, it is ready to use. For best results apply by cotton fleece or by sponge. Minimum temperature is 7 °C. Apply 1 - 2 coats with interval 6 hours between coats. The surface is suitable to wipe off with dry brush or cloth after 30 minutes and would be polished after drying (soft flannel). The coating is dry after 24 hours. Absorbent materials of organic origins (cloth, paper, dust, sawdust etc.) soaked with varnish need to be disposed, because it could self-ignite under specific circumstances.

### PACK SIZES

0,75 l  
2,5 l

### COVERAGE (m<sup>2</sup>/l)

25

### USE

INTERIOR  
EXTERIOR

### APPLICATION



0000  
colorless



# LAZUROL

# CLASSIC

## S 1023 | PENETRATING WOOD STAIN WITH OILS

### PRODUCT:

The solvent-based wood stain protects and decorates soft and hardwoods exposed to weather conditions, also for interior, especially: planed wood, sawn timber, garden furniture, wooden wall panelling and ceilings, fences, cottages and wooden houses, windows, doors. It deeply penetrates wooden structure and enhances its natural beauty, provides highly effective coating. It contains natural oil and also protects against UV radiation. Renovation is very simple. Colourless wood stain uses in interior only.

### SURFACE PREPARATION:

Wood has to be cleaned, dried with humidity max 12 %. Excessive resin (larch and pine) has to be stripped by thinner C 6000. Sand in grain direction and dust off. Quality and durability of coat depends on wood treatment. It is recommended to treat the exterior wood against mould, fungi and insects by LAZUROL FUNGICIDAL PENETRATION S 1033 or LAZUROL FUNGI. Sand by fine sandpaper, dust off and apply wood stain. Poorly adhering old coat removes to the solid surface.

### THINNER S 6006 for cleaning tools

### RECOMMENDED APPLICATION:

Mix properly before use. It shouldn't be thinned, it is ready to use. Minimum temperature for application is 7 °C. Apply 1 - 2 coats for interior and 3 coats for exterior use. The colourless wood stain is for interior only. Recoat after 24 hours. The surface is suitable to wipe off with dry brush or cloth after 10 - 15 minutes, beauty of wood highlights. LAZUROL UNIVERSAL VARNISH S 1002 (natural LAZUROL GOLD S 1037) applies for high gloss surface. LAZUROL FLOOR VARNISH S 1020 uses for high durability of floor.

### PACK SIZES

0,75 l  
2,5 l  
4 l  
9 l  
16 l

### COVERAGE (m<sup>2</sup>/l)

8 - 10

### USE

INTERIOR  
EXTERIOR

### APPLICATION



# LAZUROL IMPREGNAČNÍ ZÁKLAD

## S 1033 | FUNGICIDAL PENETRATION



0000  
transparent



### PACK SIZES

0,75 l

2,5 l

4,5 l

9 l

### PRODUCT:

The solvent-based fungicidal impregnation uses for preventive protection of wood against mould, fungi and insects. It is designed for threat class 1 and 2 in interior, 3 in exterior. It uses for penetrating of wood, chipboard, fibreboard, garden furniture, wooden wall panelling and ceilings, fences, cottages. It can be used under oil, solvent-based or water-based wood stains and paints.

**Follow the rules for safe use of the product. Read carefully the text on the label before use.**

### SURFACE PREPARATION:

Wood has to be cleaned, dried with humidity max 12 %. Excessive resin (larch and pine) has to be stripped by thinner C 6000. Sand in grain direction and dust off. Quality and durability of coat depends on wood treatment.

### COVERAGE (m<sup>2</sup>/l)

6 - 10

### THINNER S 6006 for cleaning tools

### USE

INTERIOR

EXTERIOR

### RECOMMENDED APPLICATION:

Mix properly before use. It shouldn't be thinned, it is ready to use.

FUNGICIDAL PENETRATION S 1033 applies with temperature 10 - 25 °C. The surface wipes off with dry brush or cloth after 15 - 20 minutes. Biocide effect occurs after drying of the coating. Than wood is prepared for next processing.

### APPLICATION



# LAZUROL TOPDECOR

## S 1035 | THIN COATING WOOD STAIN WITH MIXTURE OF WAXES



### PACK SIZES

0,75 l

2,5 l

4,5 l

### PRODUCT:

The solvent-based wood stain protects and decorates soft and hardwoods exposed to weather conditions, also for interior, especially: planed wood, saw timber, garden furniture, wooden wall panelling and ceilings, fences, cottages and wooden houses, windows, doors. It deeply penetrates wooden structure and provides low built highly effective silk finish. It contains wax, natural oil and fade resistant transparent iron oxide pigments. Renovation is very simple.

### COVERAGE (m<sup>2</sup>/l)

8 - 10

### SURFACE PREPARATION:

Wood has to be cleaned, dried with humidity max 12 %. Excessive resin (larch and pine) has to be stripped by thinner C 6000. Sand in grain direction and dust off. Quality and durability of coat depends on wood treatment.

It is recommended to treat the exterior wood against mould, fungi and insects by LAZUROL FUNGICIDAL PENETRATION S 1033 or LAZUROL FUNGI. Sand by fine sandpaper, dust off and apply wood stain.

### USE

INTERIOR

EXTERIOR

Poorly adhering old coat removes to the solid surface.

### THINNER S 6006 for cleaning tools

### APPLICATION

Mix properly before use. It shouldn't be thinned, it is ready to use.

Minimum temperature for application is 7 °C. Apply 1 - 2 coats for interior and 3 coats for exterior use. Recoat after 24 hours. The surface wipes off with a dry brush or cloth after 10 - 15 minutes, beauty of wood highlights. LAZUROL UNIVERSAL VARNISH S 1002 (natural LAZUROL GOLD S 1037) applies for high gloss surface. LAZUROL FLOOR VARNISH S 1020 uses for high durability of floor.





# LAZUROL

# TOPDECOR BÁZE

## S 1035 | THIN COATING WOOD STAIN WITH MIXTURE OF WAXES BASE

### PRODUCT:

The base is designed for mixing centres. The solvent-based wood stain protects and decorates soft and hardwoods exposed to weather conditions, also in interior, especially: planed wood, saw timber, garden furniture, wooden wall panelling and ceilings, fences, cottages and wooden houses, windows, doors. It deeply penetrates wooden structure and provides low built highly effective silk finish. It contains wax, natural oil and fade resistant transparent iron oxide pigments. Renovation is very simple.

### SURFACE PREPARATION:

Wood has to be cleaned, dried with humidity max 12 %. Excessive resin (larch and pine) has to be stripped by thinner C 6000. Sand in grain direction and dust off. Quality and durability of coat depends on wood treatment. It is recommended to treat the exterior wood against mould, fungi and insects by LAZUROL FUNGICIDAL PENETRATION S 1033 or LAZUROL FUNGI. Sand by fine sandpaper, dust off and apply wood stain. Poorly adhering old coat removes to the solid surface.

### THINNER S 6006 for cleaning tools

### RECOMMENDED APPLICATION:

Mix properly before use. It shouldn't be thinned, it is ready to use. Minimum temperature for application is 7 °C. Apply 1 - 2 coats for interior and 3 coats for exterior use. Recoat after 24 hours. The surface wipes off with a dry brush or cloth after 10 - 15 minutes, beauty of wood highlights. LAZUROL UNIVERSAL VARNISH S 1002 (natural LAZUROL GOLD S 1037) applies for high gloss surface. LAZUROL FLOOR VARNISH S 1020 uses for high durability of floor.

### TINTING:

Different colour shades are prepared by tinting system RAINBOW.

### PACK SIZES

0,75 l  
3 l  
9 l

### COVERAGE (m<sup>2</sup>/l)

8 - 10

### USE

INTERIOR  
EXTERIOR

### APPLICATION



### TINTING



# LAZUROL

# GOLD

## S 1037 | THIXOTROPIC WOOD STAIN

### PRODUCT:

The high performance solvent-based wood stain protects and decorates soft and hardwoods exposed to weather conditions, also in interior, especially: planed wood, saw timber, garden furniture, wooden wall panelling and ceilings, fences, cottages and wooden houses. It contains transparent iron oxide pigments. The coating is highly decorative and enhances beauty of wood. Water-repellent finish protects against UV radiation. The wood stain doesn't run down when applied and it has excellent linking on large surfaces.

### SURFACE PREPARATION:

Wood has to be cleaned, dried with humidity max 12 %. Excessive resin (larch and pine) has to be stripped by thinner C 6000. Sand in grain direction and dust off. Quality and durability of coat depends on wood treatment. It is recommended to treat the exterior wood against mould, fungi and insects by LAZUROL FUNGICIDAL PENETRATION S 1033 or LAZUROL FUNGI, for interior colourless LAZUROL CLASSIC S 1023. Sand by fine sandpaper, dust off and apply wood stain. Poorly adhering old coat removes to the solid surface.

### THINNER S 6006 for cleaning tools

### RECOMMENDED APPLICATION:

Mix properly before use. It shouldn't be thinned, it is ready to use. Minimum temperature for application is 7 °C. Apply 2 - 3 coats in wood direction, second coat after 6 hours. Sand after 24 hours. Colour shades are intermixable. Apply by brush for wood stains with natural fibre, roller for varnishes and wood stains (MOLTOPREN).

### PACK SIZES

0,75 l  
2,5 l

### COVERAGE (m<sup>2</sup>/l)

17

### USE

INTERIOR  
EXTERIOR

### APPLICATION



# LAZUROL

# GOLD BÁZE

## S 1037 | THIXOTROPIC WOOD STAIN BASE



### PACK SIZES

0,75 l

3 l

### COVERAGE (m<sup>2</sup>/l)

17

### USE

INTERIOR

EXTERIOR

### APPLICATION



### TINTING



### PRODUCT:

The base is designed for mixing centres. The high performance solvent-based wood stain protects and decorates soft and hardwoods exposed to weather conditions, also in interior, especially: planed wood, saw timber, garden furniture, wooden wall panelling and ceilings, fences, cottages and wooden houses. It contains transparent iron oxide pigments. The coating is highly decorative and enhances beauty of wood. Water-repellent finish protects against UV radiation. The wood stain doesn't run down when applied and it has excellent linking on large surfaces.

### SURFACE PREPARATION:

Wood has to be cleaned, dried with humidity max 12 %. Excessive resin (larch and pine) has to be stripped by thinner C 6000. Sand in grain direction and dust off. Quality and durability of coat depends on wood treatment. It is recommended to treat the exterior wood against mould, fungi and insects by LAZUROL FUNGICIDAL PENETRATION S 1033 or LAZUROL FUNGI, for interior colourless LAZUROL CLASSIC S 1023. Sand by fine sandpaper, dust off and apply wood stain. Poorly adhering old coat removes to the solid surface.

### THINNER S 6006 for cleaning tools

### RECOMMENDED APPLICATION:

Mix properly before use. It shouldn't be thinned, it is ready to use.

Minimum temperature for application is 7 °C. Apply 2 - 3 coats in wood direction, second coat after 6 hours.

Sand after 24 hours. Colour shades are intermixable. Apply by brush for wood stains with natural fibre, roller for varnishes and wood stains (MOLTOPREN).

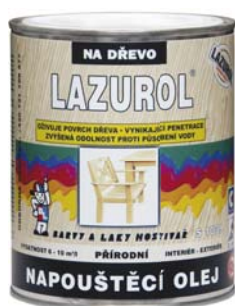
### TINTING:

Different colour shades are prepared by tinting system RAINBOW.

# LAZUROL

# NAPOUŠTĚCÍ OLEJ

## S 1039 | PENETRATING OIL



0000  
natural



### PACK SIZES

0,75 l

2,5 l

### COVERAGE (m<sup>2</sup>/l)

6 - 10

### USE

INTERIOR

EXTERIOR

### APPLICATION



### PRODUCT:

The solvent-based penetrating oil treats soft and hardwoods exposed to weather conditions, also in interior, especially garden furniture. It highlights wooden surface, gives silk gloss and easy maintenance.

### SURFACE PREPARATION:

Wood has to be cleaned, dried with humidity max 12 %. Excessive resin (larch and pine) has to be stripped by thinner C 6000. Sand in grain direction and dust off. Quality and durability of coat depends on wood treatment.

### THINNER S 6006 for cleaning tools

### RECOMMENDED APPLICATION:

Mix properly before use. It shouldn't be thinned, it is ready to use.

Minimum temperature for application is 7 °C. The surface wipes off with dry brush or cloth after 15 minutes.

Second coat applies with the same procedure after drying.

# LAZUROL RENOVAČNÍ LAZURA

## S 1040 | RENOVATING WOOD STAIN

### PRODUCT:

The solvent-based renovating wood stain is designed for lightening of dark and old wooden surfaces, especially: old fences, ceiling and wall panelling. It can be recoated by lighter shade of wood stains. This allows you to give the wood a new attractive look. The product doesn't smell, it doesn't contain aromatic compounds. It lightens all stains and imitates look of new wood.

### SURFACE PREPARATION:

Wood has to be cleaned and dried. If surface is slightly worn, it sands by a sandpaper and dusts off. If surface is damaged, wire brush uses in grain direction, than it sands, dusts off and penetrates.

### THINNER S 6006 for cleaning tools

### RECOMMENDED APPLICATION:

Mix properly before use. It shouldn't be thinned, it is ready to use.

It is suitable to apply 1 coat of LAZUROL FUNGICIDAL PENETRATION S 1033 in exterior against mould, fungi and insects. Apply 1 - 2 coats of LAZUROL RENOVATING WOOD STAIN S 1040 by brush. Finish depends on previous wear of the surface and its preparation. Very old wood coats 2 times for sure. Recoat after 24 hours. Then apply LAZUROL TOPDECOR S 1035 or LAZUROL GOLD S 1037.

### PACK SIZES

0,75 l

### COVERAGE (m<sup>2</sup>/l)

17

### USE

INTERIOR

EXTERIOR

### APPLICATION



0666  
light ochre



# LAZUROL TIXOTROPNÍ LAK

## S 1091 | THIXOTROPIC VARNISH FOR VERTICAL APPLICATIONS

### PRODUCT:

The solvent-based varnish gloss/matt is designed for transparent coating of especially vertical wood and metal surfaces, for example: wooden wall panelling and ceiling in interior and exterior. The varnish creates almost solid gel. It becomes thinner by mixing and application by brush is simple. Then it changes into gel again. It doesn't run down both the vertical surface and the brush.

### SURFACE PREPARATION:

Wood has to be cleaned, dried with humidity max 12 %. Excessive resin (larch and pine) has to be stripped by thinner C 6000. Sand in grain direction and dust off. Quality and durability of coat depends on wood treatment. For best results wood penetrates to unify absorbency, better protection, in case of fungicidal impregnation against mould, fungi and insects. Than sand by fine sandpaper, dust off and apply varnish. Poorly adhering old coat removes to the solid surface.

### THINNER S 6006 for washing tools

### RECOMMENDED APPLICATION:

Mix properly before use. It shouldn't be thinned, it is ready to use.

It is suitable to apply 1 coat of penetration LAZUROL FUNGICIDAL IMPREGNATION S1033 in exterior or colourless LAZUROL CLASSIC S 1023. It sands after drying 24 hours. Apply 2 coats of LAZUROL THIXOTROPIC VARNISH S 1091. Optimal film thickness of one coat is 35 - 40 µm. Recoat after 24 hours.

### PACK SIZES

0,75 l

### COVERAGE (m<sup>2</sup>/l)

8 - 12

### USE

INTERIOR

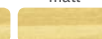
EXTERIOR

### APPLICATION



0000  
gloss

0001  
matt



# LAZUROL

# LODNÍ LAK

## S 1119 | YACHT VARNISH



0000  
gloss



### PACK SIZES

0,375 l

0,75 l

2,5 l

### COVERAGE (m<sup>2</sup>/l)

14 - 16

### USE

INTERIOR

EXTERIOR

### APPLICATION



### PRODUCT:

The highly durable and flexible solvent-based varnish decorates and protects woodwork exposed to moisture and water, for example: garden furniture, sports equipment, cork, wooden wall panelling, both interior and exterior. The varnish is highly resistant to humidity and water, application is easy, it has long lasting gloss and excellent weather protection.

### SURFACE PREPARATION:

Wood has to be cleaned, dried with humidity max 12 %. Excessive resin (larch and pine) has to be stripped by thinner C 6000. Sand in grain direction and dust off. Quality and durability of coat depends on wood treatment. For best results wood penetrates to unify absorbency, better protection, in case of fungicidal impregnation against mould, fungi and insects. Then sand by fine sandpaper, dust off and apply varnish. Poorly adhering old coat removes to the solid surface.

### THINNER S 6006, S 6001 for spraying

### RECOMMENDED APPLICATION:

Mix properly before use.

Wooden and porous surfaces penetrate by 1 - 2 coats of LAZUROL FUNGICIDAL IMPREGNATION S 1033 or UNIBAL VARNISH PENETRATION O 1000. You can also use wood stains: LAZUROL CLASSIC S 1023 or LAZUROL TOPDECOR S 1035. The surface wipes off by cloth after 20 minutes. Then apply 2 - 3 coats of LAZUROL YACHT VARNISH S 1119. Recoat after 24 hours, optimal thickness of one coat is 25 - 30 µm. Coat while weather is stable and dry.

# LAZUROL

# OKNOBAL STANDARD

## S 2015 | ENAMEL FOR WINDOWS



0100  
white



### PACK SIZES

0,6 l

### COVERAGE (m<sup>2</sup>/l)

14 - 16

### USE

INTERIOR

EXTERIOR

### APPLICATION



### PRODUCT:

The solvent-based gloss enamel is designed for coating of wood, especially: wooden windows, doors, ceiling, both interior and exterior. It has proper opacity and spreading rate, excellent durability. The paint reduces tackiness after drying. It protects against weather conditions and UV radiation.

### SURFACE PREPARATION:

Wood has to be cleaned, dried with humidity max 12 %. Excessive resin (larch and pine) has to be stripped by thinner C6000. Sand in grain direction and dust off. Quality and durability of coat depends on wood treatment. For best results wood penetrates to unify absorbency, better protection, in case of fungicidal impregnation against mould, fungi and insects. Then sand by fine sandpaper, dust off. Poorly adhering old coat removes to the solid surface.

### THINNER S 6006 for brush or roller, S 6001 for spraying

### RECOMMENDED APPLICATION:

Mix properly before use, thin as needed.

Penetrate by 1 - 2 coats of LAZUROL FUNGICIDAL PENETRATION S 1033 or UNIBAL VARNISH IMPREGNATION O 1000. The surface wipes off by cloth after 20 minutes. Sand after drying 24 hours. Then apply 1 - 2 coats of PRAGOPRIMER PLUS S 2070 or LAZUROL OKNOBAL PRIMER S 2060. Drying time is 24 hours. Apply 1 - 3 coats of LAZUROL ENAMEL FOR WINDOWS S 2015. Drying of one coat is 24 hours and optimal film thickness is 25 - 30 µm.



# LAZUROL

# OKNOBAL ZÁKLAD

## S 2060 | QUICK DRYING PRIMER

### PRODUCT:

The solvent-based primer uses to the system of the wood preservation exposed to weather conditions. It has excellent opacity, spreading rate, dries quickly and dry film smooths very well, it can be also used in interior.

### SURFACE PREPARATION:

Wood has to be cleaned, dried with humidity max 12 %. Excessive resin (larch and pine) has to be stripped by thinner C 6000. Sand in grain direction and dust off. Quality and durability of coat depends on wood treatment. For best results wood penetrates to unify absorbency, better protection, in case of fungicidal impregnation against mould, fungi and insects. Than sand by fine sandpaper, dust off. Poorly adhering old coat removes to the solid surface.

**THINNER S 6006 for brush or roller, S 6001 for spraying**

### RECOMMENDED APPLICATION:

Mix properly before use. It shouldn't be thinned, it is ready to use. Penetrate by 1 - 2 coats of LAZUROL FUNGICIDAL PENETRATION S 1033 or UNIBAL VARNISH PENETRATION O 1000. It sands with fine sandpaper after drying. Then apply 1 - 2 coats of LAZUROL OKNOBAL PRIMER S 2060. Optimal film thickness is 30 - 35 µm. It can be recoated by gloss INDUSTRIAL UNIVERSAL S 2013, INDUSTRIAL PLUS S 2071 or matt INDUSTRIAL UNIMAT S 2075, for windows LAZUROL OKNOBAL ENAMEL U 2015 or LAZUROL FOR WINDOWS STANDARD S 2015.

### PACK SIZES

0,6 l

### COVERAGE (m<sup>2</sup>/l)

15 - 17

### USE

INTERIOR

EXTERIOR

### APPLICATION



0100  
white



# LAZUROL

# OKNOBAL EMAIL

## U 2015 | URETHANIZED ENAMEL FOR WINDOWS

### PRODUCT:

The solvent-based urethanized enamel uses for coating of woodworks, especially: wooden windows, doors, ceilings, both interior and exterior. It has high durability, opacity, excellent plasticity and silk gloss. The enamel has perfect spreading rate, anti-blocking reduces tackiness after drying, thus handling improves. It protects against weather conditions and UV radiation, it has long lasting finish.

### SURFACE PREPARATION:

Wood has to be cleaned, dried with humidity max 12 %. Excessive resin (larch and pine) has to be stripped by thinner C 6000. Sand in grain direction and dust off. Quality and durability of coat depends on wood treatment. For best results wood penetrates to unify absorbency, better protection, in case of fungicidal impregnation against mould, fungi and insects. Than sand by fine sandpaper, dust off. Poorly adhering old coat removes to the solid surface.

**THINNER S 6006**

### RECOMMENDED APPLICATION:

Mix properly before use, thin as needed. Penetrate by 1 - 2 coats of LAZUROL FUNGICIDAL PENETRATION S 1033. Apply 1 - 2 coats of primer for wood PRAGOPRIMER PLUS S 2070 or LAZUROL OKNOBAL PRIMER S 2060. Apply 1 - 2 coats of LAZUROL OKNOBAL ENAMEL U 2015 in film thickness 35 µm. Apply in two thin coats for long lasting finish. Recoat after 10 hours when temperature is 20 - 25 °C and film thickness 30 - 35 µm.

### PACK SIZES

0,6 l

2,5 l

4 l

### COVERAGE (m<sup>2</sup>/l)

15 - 17

### USE

INTERIOR

EXTERIOR

### APPLICATION



1000  
white

2800  
palisandr

6003  
ivory



# LAZUROL

# AQUA P UREX

## V 1301 | ACRYLURETHANE VARNISH FOR WOOD



0000 gloss  
0001 matt  
0002 semi-matt



### PACK SIZES

0,6 kg

5 kg

### COVERAGE

(m<sup>2</sup>/kg)

12

### USE

INTERIOR

### APPLICATION



### PRODUCT:

The water-based varnish makes resistant finish that highlights beauty of wood. It uses on hard and soft woods, plywood, furniture, parquets and wood panelling in interior. It can be used as clear coat on acrylic enamels. It meets the requirements of slip resistance. **The product meets requirements for coating of toys for children 3 years old.** It contains UV filters.

### SURFACE PREPARATION:

The surface has to be cleaned, rid of grease, dust and loose old coats. Excessive resin has to be stripped. Sand in grain direction and dust off.

### RECOMMENDED APPLICATION:

Mix properly before use. Thin the varnish by 20 % of water for 1st coat. The surface sands by sandpaper no. 400 - 600. Apply 2 - 3 coats by undiluted varnish, 2 - 4 hours between coats. The temperature needs to be 15 - 25 °C. Apply by brush, roller or spray.

# LAZUROL

# AQUA S AKRYL

## V 1302 | VARNISH FOR WOOD



0000 gloss  
0001 matt



### PACK SIZES

0,6 kg

5 kg

### COVERAGE

(m<sup>2</sup>/kg)

12

### USE

INTERIOR

### APPLICATION



### PRODUCT:

The water-based varnish uses on hard and soft woods, especially: furniture, wooden panelling, plywood in interior. It is possible to use it as clear coat on acrylic enamels.

### SURFACE PREPARATION:

The surface has to be cleaned, rid of grease, dust and loose old coats. Excessive resin has to be stripped. Sand in grain direction and dust off. The surface impregnates by the varnish thinned with water in ratio 1:1 or impregnating primer: REMAL, BARLET or SOICRAT. Then it sands by sandpaper no. 400 - 600 after drying at least 4 hours.

### RECOMMENDED APPLICATION:

Mix properly before use. It shouldn't be thinned. Apply 2 - 3 coats. When applies on acrylic coat, the surface slightly sands and dusts off (without impregnation), apply 1 - 2 coats. The surface sands with sandpaper no. 400 - 600, when spraying after 4 hours and apply another coat. The temperature needs to be above 10 °C. Apply by brush, roller or spray.

# LAZUROL

# AQUA EKOHOST

## V 1305 | POLYURETHANE FLOOR VARNISH

### PRODUCT:

The high-performance water-based polyurethane floor varnish has high durability and hardness, enhances beauty of wood. It uses for coating in interior, especially: furniture, parquets, cork and porous surfaces as fibreboards, plywood. It contains filter against UV radiation. It produces in clear semi-matt and matt versions. It meets the slip resistance requirements.

### SURFACE PREPARATION:

Wooden surface sands by sandpaper no. 150 and dusts off.

### RECOMMENDED APPLICATION:

Mix properly before use.

Apply 1 coat with additional max 10 % of water. Sand with sandpaper no. 400 - 600 to remove fibres after 4 hours. Then apply 1 - 2 coats. Coating dries against dust in 6 hours, final hardness in 48 hours.

Temperature for application is 15 - 25 °C. Apply by brush, roller or spaying.

### TINTING:

Different colour shades are prepared by tinting system RAINBOW.

### PACK SIZES

0,3 kg  
0,6 kg  
2 kg  
5 kg

### COVERAGE (m<sup>2</sup>/kg)

12

### USE

INTERIOR

### APPLICATION



### TINTING



0001  
matt

0002  
semi-matt



# LAZUROL

# AQUA NAPOUŠTĚDLO

## V 1314 | FUNGICIDAL AND INSECTICIDAL IMPREGNATING PRIMER

### PRODUCT:

The water-based impregnating primer prevents wood surfaces against wood colouring and decaying fungi and insects. It uses under water based wood stains and enamels. Treated wood in interior (class 1 and 2 according CSN EN 335) and exterior (class 3 CSN EN 335)

Active substances: Propiconazole (ES 262-104-4): 9 g/kg of the product, 3-iodine-2-propinyl-N-butylcarbamate (ES 259-627-5) 3 g/kg, Permethrin (ES 258-067-9): 1 g/kg, type designation according CSN 490600-1: F<sub>B</sub>, B, I<sub>P</sub> 1, 2, 3, S. Don't use it in conflict with the instruction.

Follow the rules for safe use of the product. Read carefully the text on the label and information before use.

### SURFACE PREPARATION:

The surface sands by a sandpaper no. 60 - 100 and dusts off.

### RECOMMENDED APPLICATION:

Mix properly before use. Coat the wood by brush or dipping with drying time 6 - 8 hours. The surface sands by a sandpaper no. 220 - 240. Than process the wood as needed.

### PACK SIZES

0,7 kg  
2,5 kg  
5 kg

### COVERAGE (m<sup>2</sup>/kg)

7 - 10

### USE

INTERIOR

EXTERIOR

### APPLICATION



0000  
transparent



# LAZUROL

# AQUA DEKOR

## V 1315 | THIN COATING WOOD STAIN



### PACK SIZES

0,7 kg

2,5 kg

### COVERAGE (m<sup>2</sup>/kg)

12 - 15

### USE

INTERIOR

EXTERIOR

### APPLICATION



### PRODUCT:

The water-based wood stain makes a high quality coating of wood, especially: pergolas, fences, timbers, building cladding, log cabins, both interior and exterior. It can be used for exterior terraces assuming limited durability (mechanical and chemical exposure) and frequent renovation. The wood stain also uses for coating of dry decorations, but not recommended for wooden floors and stairs in interior.

### SURFACE PREPARATION:

The surface sands by a sandpaper no. 60 - 100 and impregnates with LAZUROL AQUA FUNGICIDAL AND INSECTICIDAL IMPREGNATION PRIMER, especially in exterior.

### RECOMMENDED APPLICATION:

Mix properly before use, it shouldn't be thinned. It applies by a brush or a spray. Apply 1st coat of LAZUROL AQUA DEKOR, let dry for 6 hours, than it smoothes by a sandpaper no. 220 - 240. Apply another 1 - 2 coats with drying time at least 6 hours between them at 20 °C. The stain residue wipes by dry brush from top of the surface. LAZUROL AQUA FINISH uses 1-3 times per year to close micro cracks, prolong renovation time and gives new satin gloss. The temperature for application needs to be 18 - 25 °C, at least 10 °C.

# LAZUROL

# AQUA BALZÁM

## V 1316 | TOP FINISH



0000  
transparent



### PACK SIZES

0,7 kg

### COVERAGE (m<sup>2</sup>/kg)

40 - 72

### USE

INTERIOR

EXTERIOR

### APPLICATION



### PRODUCT:

The water-based top finish uses for renovating of wood coated by LAZUROL AQUA DEKOR. It closes micro cracks, makes water resistant thin coat on top and gives new satin gloss, finally prolong renovation time. It can be used in interior and exterior.

### RECOMMENDED APPLICATION:

Mix properly before use. It thins by water in ratio: 1 part of the top finish to 3 - 6 parts of water. It applies in 1 coat by a sponge, a cloth, a brush or a mop. The application temperature needs to be 18 - 25 °C, at least 10 °C. Treat the surface according wear 1 - 3 times per year.



# LAZUROL

# PRAGOLESK

## C 1037 | NITROCELLULOSE GLOSS VARNISH

### PRODUCT:

The solvent-based varnish is designed for clear gloss coating of wood in interior, for example: sports equipment, small woodworks. It dries quickly and harden well. Additives absorbs UV radiation, thus yellowing of coat and wood is significantly reduced.

### SURFACE PREPARATION:

Wood has to be cleaned, dried with humidity max 12 %. Excessive resin (larch and pine) has to be stripped by thinner C 6000. Sand in grain direction and dust off. Quality and durability of coat depends on wood treatment.

### THINNER C 6000

### RECOMMENDED APPLICATION:

Mix properly before use.

Apply 1 coat (spray) of LAZUROL PRAGOLESK C 1037 thinned by C 6000 (30 %). The surface sands with sandpaper no. 240 - 320. Apply 2 - 3 coats of LAZUROL PRAGOLESK C 1037. Recoat after 2 hours, optimal film thickness 20 µm.

Don't use it for coating exposed to weather conditions.

### PACK SIZES

0,375 l

0,75 l

4 l

9 l

### COVERAGE (m<sup>2</sup>/l)

9

### USE

INTERIOR

### APPLICATION



0000  
gloss



# LAZUROL

# PRAGOMAT

## C 1038 | NITROCELLULOSE MATT VARNISH

### PRODUCT:

The solvent-based varnish is designed for matt coating of wood in interior, for example: sports equipment, small woodworks. It dries quickly and harden well. Additives absorbs UV radiation, thus yellowing of coat and wood is significantly reduced.

### SURFACE PREPARATION:

Wood has to be cleaned, dried with humidity max 12 %. Excessive resin (larch and pine) has to be stripped by thinner C 6000. Sand in grain direction and dust off. Quality and durability of coat depends on wood treatment.

### THINNER C 6000

### RECOMMENDED APPLICATION:

Mix properly before use.

Apply 1 coat (spray) of LAZUROL PRAGOMAT C 1038 thinned by C 6000 (30 %). The surface sands with sandpaper no. 240 - 320. Apply 2 - 3 coats of LAZUROL PRAGOMAT C 1038. Recoat after 2 hours, optimal film thickness 20 µm.

Don't use it for coating exposed to weather conditions.

### PACK SIZES

0,375 l

0,75 l

4 l

9 l

### COVERAGE (m<sup>2</sup>/l)

9

### USE

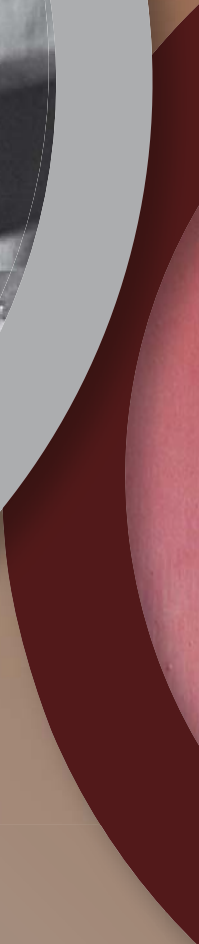
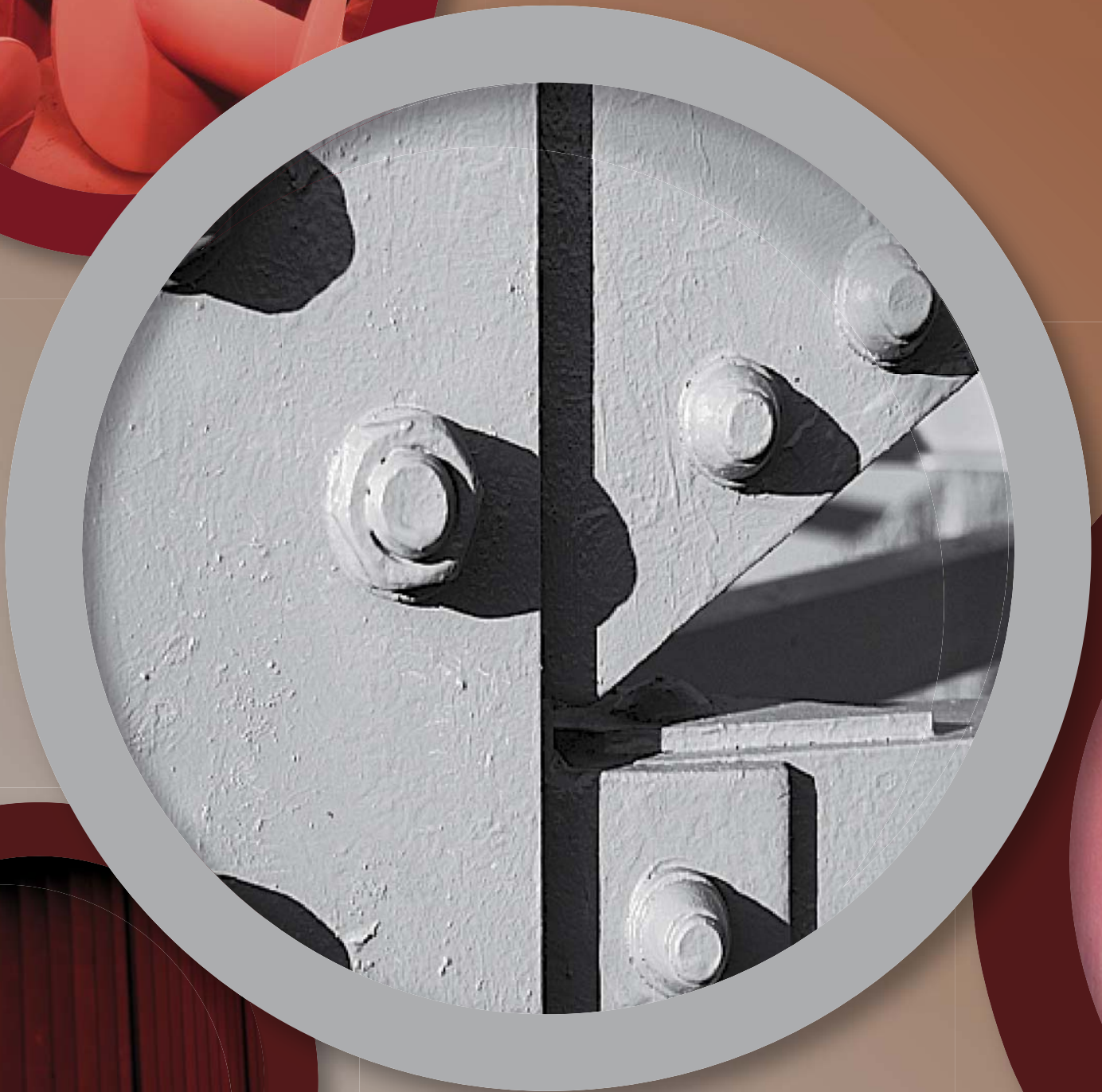
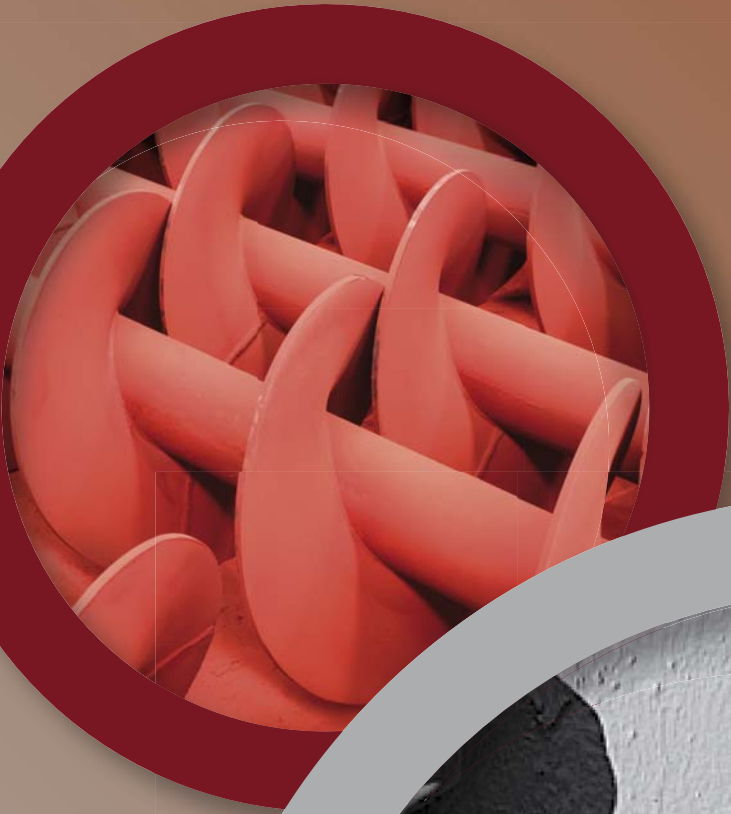
INTERIOR

### APPLICATION



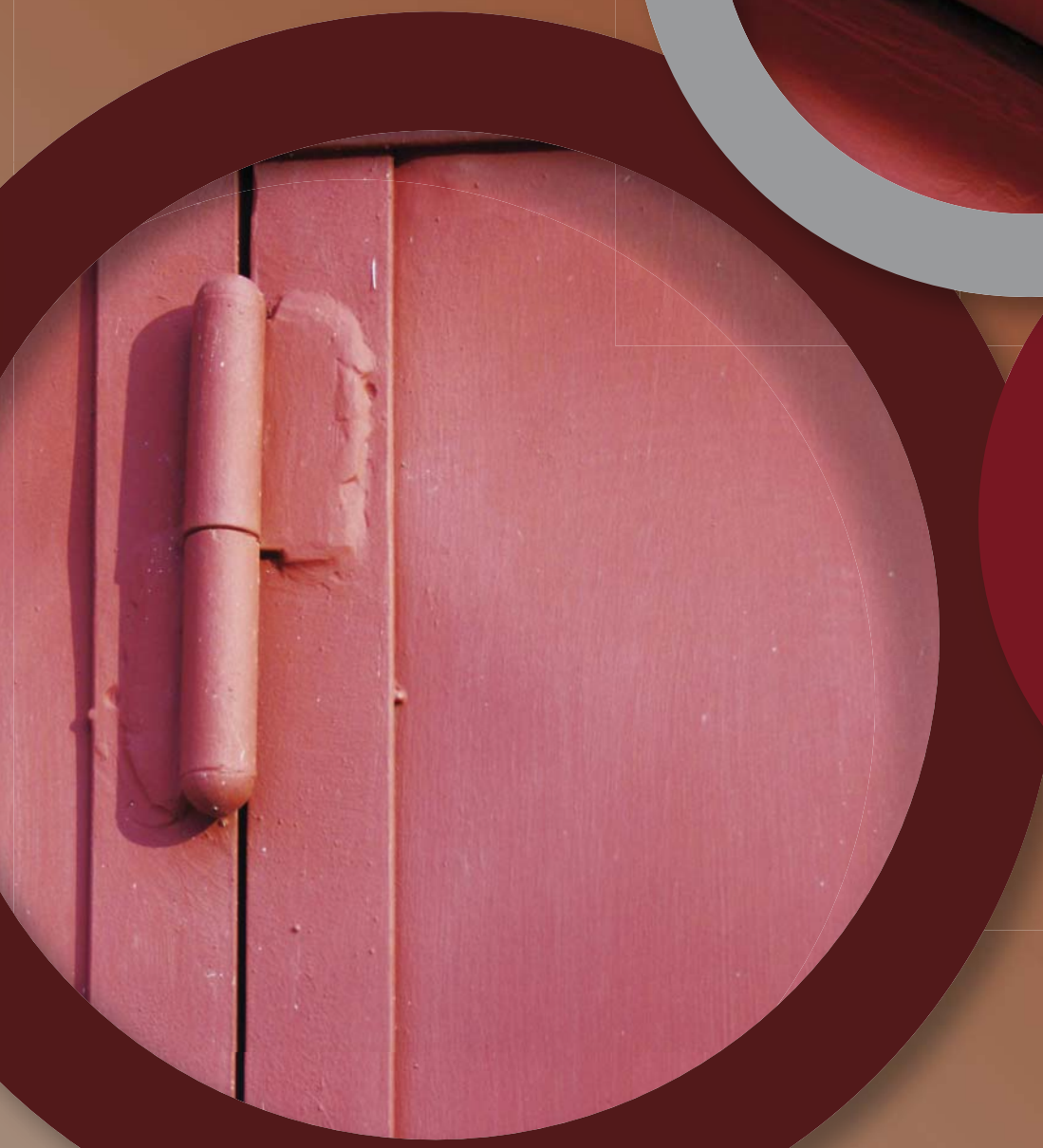
0000  
matt





# PRAGOPRIMER

SOLVENT-BASED PRIMERS  
ON METAL AND WOOD





# PRAGOPRIMER

# STANDARD

## S 2000 | QUICK DRYING PRIMER



0100 white    0110 grey    0840 russet



### PACK SIZES

0,35 l

0,6 l

2,5 l

4 l

9 l

18 l

### COVERAGE (m<sup>2</sup>/l)

18 - 21

### USE

INTERIOR

EXTERIOR

### APPLICATION



### PRODUCT:

The universal solvent-based anticorrosive primer uses for undercoating of steel and metal surfaces, both interior and exterior, especially under air-drying solvent-based topcoats. It is also possible to use it for coating of non-metal materials, porous surfaces, but it is necessary to penetrate before.

### SURFACE PREPARATION:

The surface has to be cleaned, dried and free of grease, rust and dust. Degrease by TECHNICAL BENZENE P 6402, ACETONE P6401 or hot water with detergent. Salt residue rinse with water. Defective or poorly adhering impurities remove by sanding or scraping, thoroughly remove rust (metal brush, grindstone, rust remover). A rust remover rinses by water.

Porous materials penetrate to unify absorbency of the surface.

Previously painted surfaces clean, degrease and remove all poorly adhering old coats to the solid surface.

Verify compatibility between old paint and new one. Perform a test on the area 1 m<sup>2</sup>.

### THINNER S 6001 for spraying, S 6006 for brush or roller

### RECOMMENDED APPLICATION:

Mix properly before use, thin as needed.

**Metal:** Apply 1 coat of PRAGOPRIMER STANDARD S 2000, drying 24 hours (can be forced till 80 °C).

Optimal film thickness is 25 - 30 µm. It seals, if necessary (i.e. BKP Rapid TOS). It sands with a sandpaper no. 180 - 220 while wet. Apply 1 coat of PRAGOPRIMER STANDARD S 2000. It sands with a sandpaper no. 280 after drying. Apply 1 - 2 coats of gloss enamel INDUSTROL UNIVERSAL S 2013, INDUSTROL PLUS S 2071 or matt INDUSTROL UNIMAT S 2075.

**Porous material:** Apply 1 coat of penetration LAZUROL CLASSIC S 1023 or LAZUROL FUNGICIDAL

PENETRATION S 1033, drying time 24 hours. Apply 1 coat of PRAGOPRIMER STANDARD S 2000, drying time 24 hours. It seals, if necessary, see above. Apply 1 - 2 coats of gloss enamel INDUSTROL UNIVERSAL S 2013, INDUSTROL PLUS S 2071 or matt INDUSTROL UNIMAT S 2075.

# PRAGOPRIMER

# UNIVERZÁL

## S 2035 | UNIVERSAL PRIMER



0110 grey    0840 russet



### PACK SIZES

0,6 l

### COVERAGE (m<sup>2</sup>/l)

12 - 14

### USE

INTERIOR

EXTERIOR

### APPLICATION



### PRODUCT:

The solvent-based primer is used on metal surfaces under solvent-based topcoats, oil and nitrocellulose paints. The coating dries quickly, it is effectively anticorrosive and widely used, both interior and exterior.

### SURFACE PREPARATION:

The surface has to be cleaned, dried and free of grease, rust and dust. Degrease by TECHNICAL BENZENE P 6402, ACETONE P6401 or hot water with detergent. Salt residue rinse with water. Defective or poorly adhering impurities remove by sanding or scraping, thoroughly remove rust (metal brush, grindstone, rust remover).

A rust remover rinses by water.

Porous materials penetrate to unify absorbency of the surface.

Previously painted surfaces clean, degrease and remove all poorly adhering old coats to the solid surface.

Verify compatibility between old paint and new one. Perform a test on the area 1 m<sup>2</sup>.

### THINNER S 6005 for brush or roller, C 6000 for spraying

### RECOMMENDED APPLICATION:

Mix properly before use, thin as needed.

**Metal:** Apply 1 coat of PRAGOPRIMER UNIVERSAL S 2035, optimal film thickness is 30 - 35 µm (after 1 hour of drying at 20 °C, it is possible to spray with a solvent-based enamel). Apply 1 - 2 coats of INDUSTROL UNIVERSAL S 2013 or RADBAL STANDARD S 2119, INDUSTROL UNIMAT S 2075.



# PRAGOPRIMER

# PLUS

## S 2070 | QUICK DRYING PRIMER FOR WOOD

### PRODUCT:

The solvent-based primer uses to the system of the wood preservation exposed to weather conditions. It has excellent opacity, spreading rate, dries quickly and dry coat sands very well. It can be used also in interior.

### SURFACE PREPARATION:

Wood has to be cleaned, dried with humidity max 12 %. Excessive resin (larch and pine) has to be stripped by thinner C6000. Sand in grain direction and dust off. Quality and durability of coat depends on wood treatment. For best results wood penetrates to unify absorbency, better protection, in case of fungicidal impregnation against mould, fungi and insects. Than sand by fine sandpaper, dust off. Poorly adhering old coat removes to the solid surface.

**THINNER S 6006 for brush or roller, S 6001 for spraying**

### RECOMMENDED APPLICATION:

Mix properly before use. It shouldn't be thinned, it is ready to use. Penetrate by 1 coat of LAZUROL FUNGICIDAL PENETRATION S 1033 or UNIBAL VARNISH IMPREGNATION O 1000. It sands with fine sandpaper after drying. Then apply 1 - 2 coats of PRAGOPRIMER PLUS S 2070. Optimal film thickness is 30 - 35 µm. It can be recoated by gloss INDUSTRIAL UNIVERSAL S 2013, INDUSTRIAL PLUS S 2071 or matt INDUSTRIAL UNIMAT S 2075, for windows LAZUROL OKNOBAL ENAMEL U 2015 or LAZUROL FOR WINDOWS STANDARD S 2015.

### PACK SIZES

- 0,6 l
- 2,5 l
- 4 l
- 9 l

### COVERAGE (m<sup>2</sup>/l)

15 - 17

### USE

- INTERIOR
- EXTERIOR

### APPLICATION



0100  
white



# PRAGOPRIMER

# PROFI

## S 2129 | PRIMER

### PRODUCT:

The solvent-based anticorrosive primer is designed for steel and metal surfaces under solvent-based and oil topcoats, both interior and exterior. It is also possible to use it for non-metal materials, porous surfaces, but it is necessary to penetrate before. The primer dries quickly and it is also designed for airless application in high build coats.

### SURFACE PREPARATION:

The surface has to be cleaned, dried and free of grease, rust and dust. Degrease by TECHNICAL BENZENE P 6402, ACETONE P 6401 or hot water with detergent. Salt residue rinse with water. Defective or poorly adhering impurities remove by sanding or scraping, thoroughly remove rust (metal brush, grindstone, rust remover).

A rust remover rinses by water.

Porous materials penetrate to unify absorbency of the surface.

Previously painted surfaces clean, degrease and remove all poorly adhering old coats to the solid surface. Verify compatibility between old paint and new one. Perform a test on the area 1 m<sup>2</sup>.

**THINNER S 6005 for brush or roller, S 6006, S 6001 for spraying**

### RECOMMENDED APPLICATION:

Mix properly before use. It shouldn't be thinned, it is ready to use. Steel: Apply 1 coat of primer PRAGOPRIMER PROFÍ S 2129 (drying can be forced till 80 °C). Apply 2 - 3 coats of INDUSTRIAL UNIVERSAL S 2013 or INDUSTRIAL UNIMAT S 2075.

### PACK SIZES

- 10 kg
- 25 kg

### COVERAGE (m<sup>2</sup>/kg)

11 - 14

### USE

- INTERIOR
- EXTERIOR

### APPLICATION



0110  
grey

0840  
russet





# INDUSTROL

UNIVERSAL SOLVENT-BASED ENAMELS  
GLOSS AND MATT ON METAL  
AND WOOD





## S 2013 | UNIVERSAL ENAMEL GLOSS



### PACK SIZES

- 0,375 l
- 0,6 l
- 0,75 l
- 2,5 l
- 4 l
- 9 l

### PRODUCT:

The solvent-based enamel uses for coating of metal, wood and masonry, both exterior and interior, especially: metal constructions, fences, doors, door frames, parapets, wooden furniture and panelling, garden furniture. The paint has excellent opacity and spreading rate, gives durable high gloss finish. It supplies in wide range of shades, the shelf life is without changing properties. The primer paints first.

### SURFACE PREPARATION:

The surface has to be cleaned, dried and free of grease, dust. Metal rids of rust. Wood sands in grain direction and dusts off, humidity of wood max 12 %, excessive resin strips by THINNER C 6000. The primer paints first.

### COVERAGE (m<sup>2</sup>/l)

- 14 - 16

### USE

- INTERIOR
- EXTERIOR

**THINNER S 6001 for spraying, S 6006 for brush or roller**

### RECOMMENDED APPLICATION:

Mix properly before use, thin as needed.

**Metal:** Apply 1 coat of PRAGOPRIMER STANDARD S 2000 or FORMEX PRIMER FOR GALVANIZED IRON S 2003, PRAGOPRIMER UNIVERSAL S 2035, PRAGOPRIMER PROFI S 2129. It seals, if necessary (i.e. BKP Rapid), sands with sandpaper no. 180 - 220 while wet. Apply 1 coat of PRAGOPRIMER STANDARD S 2000 or PRAGOPRIMER UNIVERSAL S 2035, PRAGOPRIMER PROFI S 2129. It sands again with a sandpaper no. 280 - 320 while wet. Apply 1 - 2 coats of INDUSTROL UNIVERSAL S 2013.

**Wood:** Apply 1 coat of impregnation LAZUROL CLASSIC S1023, drying time 24 hours. Apply 1 - 2 coats of PRAGOPRIMER PLUS S 2070 or LAZUROL OKNOBAL PRIMER S 2060. Apply 2 - 3 coats of INDUSTROL UNIVERSAL S 2013. Every coat dries for 24 hours (20 °C).

It is better to apply enamel in more coats for long lasting finish. Optimal film thickness is 30 - 35 µm.

### APPLICATION





# INDUSTROL

# PLUS

## S 2071 | UNIVERSAL ENAMEL

### PRODUCT:

The universal solvent-based quick drying enamel gloss uses on metal and wood surfaces exposed to weather conditions, also in interior. It dries quickly, has excellent spreading rate and gives gloss surface, thus it is suitable for industrial applications.

### SURFACE PREPARATION:

The surface has to be cleaned, dried and free of grease, dust. Metal rids of rust. Wood sands in grain direction and dusts off, humidity of wood max 12 %, excessive resin strips by thinner C 6000. The primer paints first. Concrete or masonry has to be dry, compact, clean and aged (4 - 6 months) and insulated against ground humidity. Porous materials penetrate to unify absorbency of the surface and undercoat. Previously painted surfaces clean, degrease and remove all poorly adhering old coats. Verify compatibility between old paint and new one. Perform a test on the area 1 m<sup>2</sup>.

**THINNER S 6001 for spraying, S 6005 and S 6006 for brush or roller**

### RECOMMENDED APPLICATION:

Mix properly before use, thin as needed.

**Metal:** Apply 1 coat of PRAGOPRIMER STANDARD S 2000 or FORMEX PRIMER FOR GALVANIZED IRON S 2003, PRAGOPRIMER UNIVERSAL S 2035, PRAGOPRIMER PROFI S 2129. It seals, if necessary (i.e. BKP Rapid), it sands with sandpaper no. 180 - 220 while wet. Apply 1 coat of PRAGOPRIMER STANDARD S 2000 or PRAGOPRIMER UNIVERSAL S 2035, PRAGOPRIMER PROFI S 2129. It sands again with a sandpaper no. 280 - 320 while wet. Apply 1 - 2 coats of INDUSTROL PLUS S 2071.

**Wood:** Apply 1 coat of impregnation LAZUROL CLASSIC S 1023 or UNIBAL VARNISH PENETRATION O 1000. Apply 1 - 2 coats of PRAGOPRIMER PLUS S 2070 or LAZUROL OKNOBAL PRIMER S 2060. Smooth according needs by sandpaper no. 150 - 180, dust off. Apply 1 - 2 coats of INDUSTROL PLUS S 2071.

### PACK SIZES

0,375 l

0,75 l

4 l

### COVERAGE (m<sup>2</sup>/l)

14 - 16

### USE

INTERIOR

EXTERIOR

### APPLICATION



1000  
white



# INDUSTROL

# UNIMAT

## S 2075 | UNIVERSAL ENAMEL MATT

### PRODUCT:

The universal solvent-based enamel matt uses on metal and wood surfaces exposed to weather conditions, also in interior, especially: door frames, fences, parapets, constructions, metal objects, wooden furniture and panelling, garden furniture. It dries quickly, has excellent spreading rate, gives matt surface, thus it is widely used.

### SURFACE PREPARATION:

The surface has to be cleaned, dried and free of grease, dust. Metal rids of rust. Wood sands in grain direction and dusts off, humidity of wood max 12 %, excessive resin strips by THINNER C 6000. The primer paints first. Concrete or masonry has to be dry, compact, clean and aged (4 - 6 months) and insulated against ground humidity. Porous materials penetrate to unify absorbency of the surface and undercoat. Previously painted surfaces clean, degrease and remove all poorly adhering old coats. Verify compatibility between old paint and new one. Perform a test on the area 1 m<sup>2</sup>.

**THINNER S 6001 for spraying, S 6006 for brush or roller**

### RECOMMENDED APPLICATION:

Mix properly before use, thin as needed.

**Wood:** Apply 1 coat of impregnation LAZUROL CLASSIC S 1023 or UNIBAL VARNISH PENETRATION O 1000. Sand according needs by sandpaper no. 150 - 180, dust off. Apply 1 - 2 coats of PRAGOPRIMER PLUS S 2070 or LAZUROL OKNOBAL PRIMER S 2060. Sand by sandpaper no. 280 - 320, dust off. Apply 1 - 2 coats of INDUSTROL UNIMAT S 2075.

**Metal:** Apply 1 coat of PRAGOPRIMER STANDARD S 2000. It sands with sandpaper no. 280 - 320. Apply 1 - 2 coats of INDUSTROL UNIMAT S 2075.

### PACK SIZES

0,6 l

4 l

9 l

### COVERAGE (m<sup>2</sup>/l)

14 - 16

### USE

INTERIOR

EXTERIOR

### APPLICATION



1000  
white

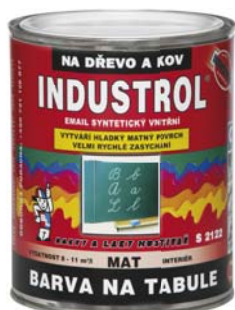
1999  
black



# INDUSTROL

# BARVA NA TABULE

## S 2122 | INTERIOR ENAMEL FOR BLACKBOARDS



0570  
green

0199  
black



### PACK SIZES

0,6 l

5 l

9 l

### COVERAGE (m<sup>2</sup>/l)

8 - 11

### USE

INTERIOR

### APPLICATION



### PRODUCT:

The solvent-based paint is designed for blackboards and ping pong tables. It can be used for painting of steel, wood, chipboards, fibreboards for interior use only. Write by chalk on blackboard after drying of the paint, but no sooner than 5 days.

### SURFACE PREPARATION:

Wood has to be cleaned, dried, sanded, humidity max. 12 %, rids of excessive resins.

Metal surface has to be clean, dry and free of grease, rust and dust. The primer uses first.

Porous materials penetrate, than use primer.

### THINNER S 6001 for spraying, S 6006 for brush or roller

### RECOMMENDED APPLICATION

Mix properly before use, thin as needed.

**Wood:** Apply 1 coat of impregnation UNIBAL VARNISH IMPREGNATION O 1000 or LAZUROL PENETRATING OIL S 1039. Apply 1 - 2 coats of INDUSTROL FOR BLACKBOARDS S 2122, recoat after 12 hours at 23 °C.

**Metal:** Apply 1 coat of PRAGOPRIMER STANDARD S 2000 or PRAGOPRIMER PROFI S 2129, PRAGOPRIMER UNIVERSAL S 2035. Apply 1 - 2 coats of INDUSTROL FOR BLACKBOARDS S 2122. Recoat at 23 °C after 12 hours.

# INDUSTROL

# PROFI BÁZE

## U 2129 | QUICK DRYING URETHANIZED ENAMEL GLOSS BASE



### PACK SIZES

0,75 l

4,5 l

9 l

### COVERAGE (m<sup>2</sup>/l)

14

### USE

INTERIOR

EXTERIOR

### APPLICATION



### TINTING



### PRODUCT:

The bases are intended for mixing centres only. The solvent-based enamel gloss uses for coating of metal, wood and other surfaces, both interior and exterior. It dries quickly and it has increased thermal resistance.

### SURFACE PREPARATION:

The surface has to be cleaned, dried and free of grease, dust. Metal rids of rust.

Wood sands in grain direction and dusts off, humidity of wood max 12 %, excessive resin strips by THINNER C 6000. The primer paints first.

Porous materials penetrate to unify absorbency of the surface and undercoat.

Previously painted surfaces clean, degrease and remove all poorly adhering old coats. Verify compatibility between old paint and new one. Perform a test on the area 1 m<sup>2</sup>.

### THINNER S 6005 for spraying, S 6005, S 6006 for brush or roller

### RECOMMENDED APPLICATION:

Mix properly before use, thin as needed.

**Metal:** Apply 1 coat of PRAGOPRIMER STANDARD S 2000 or FORMEX PRIMER FOR GALVANIZED IRON S 2003, PRAGOPRIMER UNIVERSAL S2035, PRAGOPRIMER PROFI S2129. It sands with a sandpaper no. 280 - 320. Apply 1 - 2 coats of INDUSTROL PROFI U 2129.

**Wood:** Apply 1 coat of impregnation LAZUROL CLASSIC S 1023 or UNIBAL VARNISH PENETRATION O 1000. It sands with a sandpaper no. 150 - 180. Apply 1 - 2 coats of PRAGOPRIMER PLUS S 2070 or LAZUROL OKNOBAL PRIMER S 2060. Sand it with a sandpaper no. 280 - 320. Apply 1 - 2 coats of INDUSTROL PROFI U 2129.

Optimal film thickness is 30 - 35 µm in ventilated, not humid ambient at 15 - 25 °C. Any further coat apply after 2 hour by system "wet to wet" or after 48 hours.

### TINTING:

Different colour shades are prepared by tinting system RAINBOW.

## U 2175 | UNIVERSAL URETHANIZED ENAMEL MATT BASE

### PRODUCT:

The bases is intended for mixing centres only. Solvent-based enamel matt uses for coating of metal, wood and other surfaces, both interior and exterior.

### SURFACE PREPARATION:

The surface has to be cleaned, dried and free of grease, dust. Metal rids of rust.

Wood sands in grain direction and dusts off, humidity of wood max 12 %, excessive resin strips by THINNER C 6000. The primer paints first.

Porous materials penetrate to unify absorbency of the surface and undercoat.

Previously painted surfaces clean, degrease and remove all poorly adhering old coats. Verify compatibility between old paint and new one. Perform a test on the area 1 m<sup>2</sup>.

**THINNER S 6005 for spraying, S 6006 for brush or roller**

### RECOMMENDED APPLICATION:

Mix properly before use, thin as needed.

**Wood:** Apply 1 coat of LAZUROL CLASSIC S 1023 (colourless), slightly sand by a sandpaper no. 150 - 170.

Apply 1 coat of PRAGOPRIMER PLUS S 2070 or LAZUROL OKNOBAL ZÁKLAD S 2060, sand by a sandpaper no. 280 - 320. Apply 1 - 3 coats of INDUSTROL UNIMAT U 2175.

**Metal:** Apply 1 - 2 coats of PRAGOPRIMER STANDARD S 2000, PRAGOPRIMER UNIVERSAL S 2035, PRAGOPRIMER PROFI S 2129 or FORMEX PRIMER FOR GALVANIZED IRON S 2003. Apply 1 - 3 coats of INDUSTROL UNIMAT U 2175.

Optimal film thickness is 30 - 40 µm in ventilated, not humid ambient at 15 - 25 °C. Any further coat applies after 24 hours.

### TINTING:

Different colour shades are prepared by tinting system RAINBOW.

### PACK SIZES

0,75 l

4,5 l

### COVERAGE

(m<sup>2</sup>/l)

10 - 13

### USE

INTERIOR

EXTERIOR

### APPLICATION



### TINTING



# RADBAL

SOLVENT-BASED HEAT-RESISTANT  
NON-YELLOWING RADIATOR PAINTS





# RADBAL

# STANDARD

## S 2119 | RADIATOR PAINT

### PRODUCT:

The solvent-based heat resistant paint is designed for radiators and central heating pipes. It can be applied in combination with proper primer in exterior too. The paint applies easy and dries quickly. The coat has high durability.

### SURFACE PREPARATION:

Metal has to be cleaned, dried and free of grease, rust and dust. The surface has to be painted by anticorrosive primer at first.

Previously painted surfaces clean, degrease and remove all poorly adhering old coats. Verify compatibility between old paint and new one.

**THINNER S 6001 for spraying, S 6006 for brush or roller**

### RECOMMENDED APPLICATION:

Mix properly before use, thin as needed.

Apply 1 coat of PRAGOPRIMER STANDARD S 2000 or FORMEX PRIMER FOR GALVANIZED IRON S 2003, PRAGOPRIMER UNIVERSAL S 2035, PRAGOPRIMER PROFI S 2129. Apply 1 - 2 coats of RADBAL STANDARD S 2119.

It is better to apply 2 thin coats for long lasting finish. Recoat after 24 hours.

### PACK SIZES

0,375 l

0,6 l

4 l

### COVERAGE (m<sup>2</sup>/l)

14 - 16

### USE

INTERIOR

EXTERIOR

### APPLICATION



1000 white

6003 Ivory



# RADBAL

# PROFI

## S 2120 | SPECIAL RADIATOR PAINT

### PRODUCT:

The solvent-based heat resistant paint is designed for radiators and central heating pipes. The paint is highly white, yellowing doesn't occur till 130 °C. It has proper opacity and spreading rate, the coat dries quickly. It doesn't contain aromatic compounds.

### SURFACE PREPARATION:

Metal has to be cleaned, dried and free of grease, rust and dust. The surface has to be painted by anticorrosive primer at first.

Previously painted surfaces clean, degrease and remove all poorly adhering old coats. Verify compatibility between old paint and new one.

**THINNER S 6006 for cleaning tools, S 6001 for spraying**

### RECOMMENDED APPLICATION:

Mix properly before use. It shouldn't be thinned, it is ready to use.

Apply 1 coat of PRAGOPRIMER STANDARD S 2000 or FORMEX PRIMER FOR GALVANIZED IRON S 2003, PRAGOPRIMER UNIVERSAL S 2035. Apply 1 - 2 coats of RADBAL PROFI S 2120, recoat after 12 - 24 hours.

### PACK SIZES

0,6 l

4 l

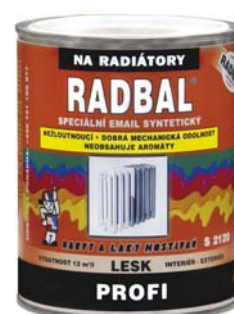
### COVERAGE (m<sup>2</sup>/l)

12

### USE

INTERIOR

### APPLICATION



1000 white

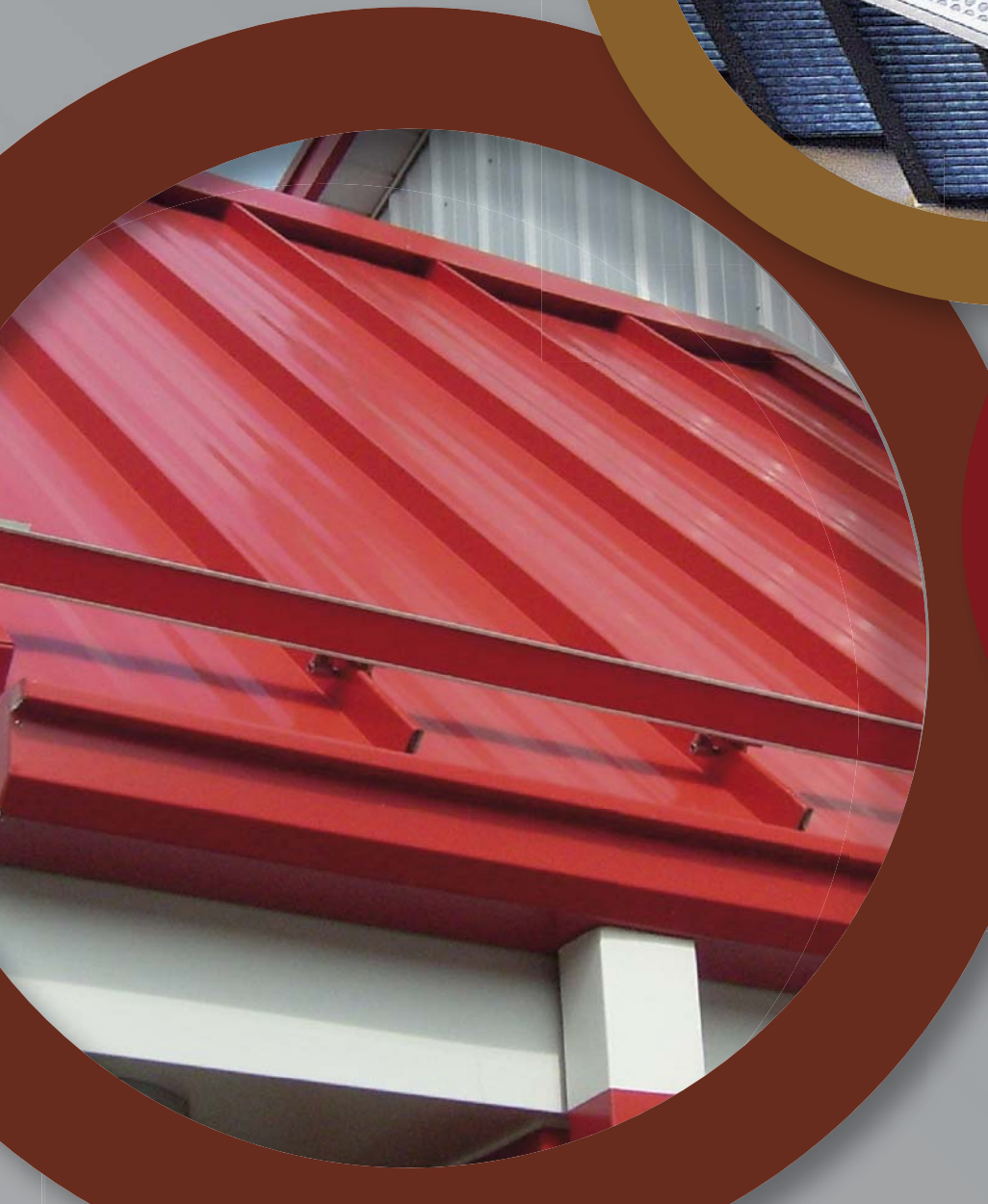
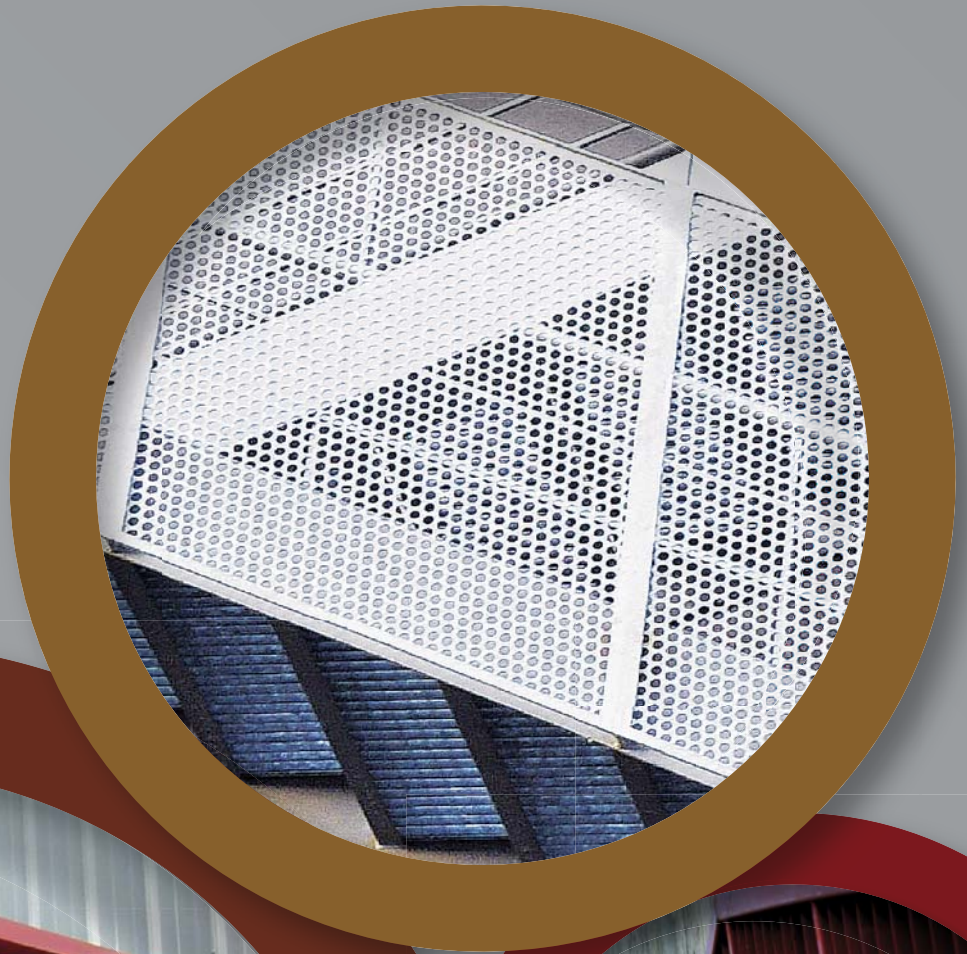






# HOSTAGRUND

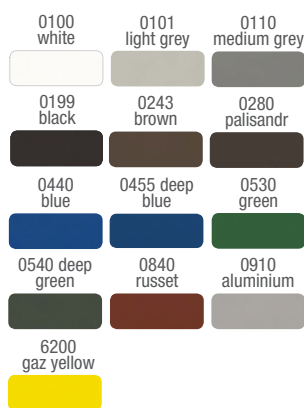
SINGLE COAT PAINTS ON METAL



# HOSTAGRUND

# 2 v 1 NA ŽELEZO

## S 2160 | SINGLE COAT FOR IRON



### PACK SIZES

0,6 l

4 l

9 l

### COVERAGE (m<sup>2</sup>/l)

4,5

### USE

INTERIOR

EXTERIOR

### APPLICATION



### PRODUCT:

The solvent-based thixotropic single coat uses on metal constructions, both exterior and interior, especially: columns, bridges, chassis, fences. It can be used for light metals, oxidized galvanized sheets and non-metal surfaces as concrete and wood after previous penetration. Thixotropy allows high build application, by airless 300 µm of wet film at once. It dries quickly even in high build coat and has silk finish. It is supplied in wide range of shades.

### SURFACE PREPARATION:

The surface has to be cleaned, dried and free of grease, rust and dust. Degrease by TECHNICAL BENZENE P 6402, ACETONE P 6401 or hot water with detergent. Salt residue rinse with water. Defective or poorly adhering impurities remove by sanding or scraping, thoroughly remove rust (metal brush, grindstone, rust remover). A rust remover rinses by water.

Porous materials penetrate to unify absorbency of the surface.

Previously painted surfaces clean, degrease and remove all poorly adhering old coats to the solid surface. Verify compatibility between old paint and new one. Perform a test on the area 1 m<sup>2</sup>.

### THINNER S 6005 for cleaning tools

### RECOMMENDED APPLICATION:

The paint doesn't thin for airless spraying and brush applications, slightly mix volume.

**Airless:** Apply 1 coat of HOSTAGRUND S 2160 with dry film thickness 100 µm.

**Conventional spraying or brush:** Apply 1 - 2 coats of HOSTAGRUND S 2160 with total dry film thickness 100 µm. Other coat applies after 4 hours, at the latest 24 hours.

# HOSTAGRUND

# KOVÁŘSKÁ BARVA

## S 2160 | SINGLE COAT FOR METALWORK



0950  
black smith



### PACK SIZES

0,375 l

0,6 l

2,5 l

4 l

9 l

### COVERAGE (m<sup>2</sup>/l)

4,5

### USE

INTERIOR

EXTERIOR

### APPLICATION



### PRODUCT:

The solvent-based single coat uses on metal for attractive appearance, especially: gates, fences and other metalwork, both exterior and interior. It can be used for non-metal surfaces as concrete and wood after previous penetration. The paint is thixotropic and doesn't run from vertical surfaces.

### SURFACE PREPARATION:

The surface has to be cleaned, dried and free of grease, rust and dust. Degrease by TECHNICAL BENZENE P 6402, ACETONE P 6401 or hot water with detergent. Salt residue rinse with water. Defective or poorly adhering impurities remove by sanding or scraping, thoroughly remove rust (metal brush, grindstone, rust remover). A rust remover rinses by water.

Porous materials penetrate to unify absorbency of the surface.

Previously painted surfaces clean, degrease and remove all poorly adhering old coats to the solid surface. Verify compatibility between old paint and new one. Perform a test on the area 1 m<sup>2</sup>.

### THINNER S 6005 for cleaning tools

### RECOMMENDED APPLICATION:

The paint doesn't thin for airless spraying and brush applications, slightly mix volume.

**Airless:** Apply 1 coat of HOSTAGRUND S 2160 with dry film thickness 100 µm.

**Conventional spraying or brush:** Apply 1 - 2 coats of HOSTAGRUND S 2160 with total dry film thickness 100 µm. Other coat applies after 4 hours in case of need, at the latest 24 hours.



# HOSTAGRUND

# PRIM 3 v 1

## S 2177 | MULTIFUNCTIONAL SINGLE COAT

### PRODUCT:

The solvent-based anticorrosive semi-glossy single coat combines primer, barrier and topcoat. It is designed for direct coating on metal, steel and oxidized galvanized surfaces, especially: roofs, metal constructions, columns, fences, both exterior and interior. It can be also used for porous materials as wood and chipboards after previous penetration.

### SURFACE PREPARATION:

The surface has to be cleaned, dried and free of grease, rust and dust. Degrease by TECHNICAL BENZENE P 6402, ACETONE P 6401 or hot water with detergent. Salt residue rinse with water. Defective or poorly adhering impurities remove by sanding or scraping, thoroughly remove rust (metal brush, grindstone, rust remover). A rust remover rinses by water.

Porous materials penetrate to unify absorbency of the surface.

Previously painted surfaces clean, degrease and remove all poorly adhering old coats to the solid surface. Verify compatibility between old paint and new one. Perform a test on the area 1 m<sup>2</sup>.

### THINNER S 6006

### RECOMMENDED APPLICATION:

Mix properly before use. It shouldn't be thinned, it is ready to use.

Apply 2 - 3 coats according needs, more than 8 hours between coats. Optimal film thickness of one coat is 30 - 40 µm.

### PACK SIZES

- 0,6 l
- 2,5 l
- 4 l
- 9 l

### COVERAGE (m<sup>2</sup>/l)

- 10 - 12

### USE

- INTERIOR
- EXTERIOR

### APPLICATION



# HOSTAGRUND

# PRIM 3 v 1 BÁZE

## S 2177 | MULTIFUNCTIONAL SINGLE COAT BASE

### PRODUCT:

The bases is intended for mixing centres only. The solvent-based anticorrosive semi-matt single coat combines primer, barrier and topcoat. It is designed for direct coating on metal, steel and wood, both exterior and interior. It can be also used for porous materials as wood and chipboards after previous penetration.

### SURFACE PREPARATION:

The surface has to be cleaned, dried and free of grease, rust and dust. Degrease by TECHNICAL BENZENE P 6402, ACETONE P 6401 or hot water with detergent. Salt residue rinse with water. Defective or poorly adhering impurities remove by sanding or scraping, thoroughly remove rust (metal brush, grindstone, rust remover). A rust remover rinses by water.

Porous materials penetrate to unify absorbency of the surface.

Previously painted surfaces clean, degrease and remove all poorly adhering old coats to the solid surface. Verify compatibility between old paint and new one. Perform a test on the area 1 m<sup>2</sup>.

### THINNER S 6006

### RECOMMENDED APPLICATION:

Mix properly before use. It shouldn't be thinned, it is ready to use.

Apply 2 - 3 coats according needs, more than 24 hours between coats. Optimal film thickness of one coat is 30 - 40 µm.

### TINTING:

Different colour shades are prepared by tinting system RAINBOW.

### PACK SIZES

- 0,75 l
- 2,5 l
- 4,5 l
- 9 l

### COVERAGE (m<sup>2</sup>/l)

- 9

### USE

- INTERIOR
- EXTERIOR

### APPLICATION



# HOSTAGRUND

# ZINEX 2 v 1

## S 2820 | SINGLE COAT FOR GALVANIZED SURFACES



**PACK SIZES**

- 0,6 l
- 2,5 l
- 4 l
- 9 l

**COVERAGE**  
(m<sup>2</sup>/l)

- 10 - 11

**USE**

- INTERIOR
- EXTERIOR

**APPLICATION**



**PRODUCT:**

The solvent-based acrylic single coat uses for painting on steel, light metal, galvanized steel in exterior and interior. It can be used under acrylic, polyurethane and epoxy topcoats. The coat has proper adhesion to steel, copper, aluminium and galvanized surfaces including fresh one. It dries quickly and the coat is resistant to weather conditions. The paint is slightly thixotropic, it doesn't run from vertical surfaces.

**SURFACE PREPARATION:**

The surface has to be cleaned, dried and free of grease, rust and dust. Degrease by TECHNICAL BENZENE P 6402, ACETONE P 6401 or hot water with detergent. Salt residue rinse with water. Defective or poorly adhering impurities remove by sanding or scraping, thoroughly remove rust (metal brush, grindstone, rust remover). A rust remover rinses by water.

Previously painted surfaces clean, degrease and remove all poorly adhering old coats to the solid surface. Verify compatibility between old paint and new one. Perform a test on the area 1 m<sup>2</sup>.

**THINNER S 6005**

**RECOMMENDED APPLICATION:**

Mix properly before use, thin as needed.

Total dry film has to be 80 µm. Drying time of second coat would be slower.

Treat difficult places (corners, edges, welds, surface defects), when spraying at first. Paint these places by brush, then spray the whole area including treated places. Second coat applies after 24 hours, in case of spraying "wet to wet" after 15 - 30 minutes.

# HOSTAGRUND

# BLOKÁTOR RZI

## U 2161 | PENETRATING ONE-PACK POLYURETHANE PRIMER



**PACK SIZES**

- 0,5 l
- 2,5 l

**COVERAGE**  
(m<sup>2</sup>/l)

- 15 - 21,5

**USE**

- INTERIOR
- EXTERIOR

**APPLICATION**



**PRODUCT:**

The solvent-based one-pack impregnating primer curing by moisture uses on metal, both exterior and interior. It ensures topcoat adherence on difficult surfaces (metal with rest of rust, light metals). The paint is highly effective in humid environment, where other fails, especially: underground collectors, metal tanks, pipes, roofs and bridge constructions. It is also suitable for penetrating of porous and less coherent surfaces as concrete, masonry and wood. Cured paint has proper chemical resistance.

**SURFACE PREPARATION:**

The surface has to be cleaned, dried and free of grease, rust and dust. Previously painted surfaces clean, degrease and remove all poorly adhering old coats to the solid surface. Verify compatibility between old paint and new one. Perform a test on the area 1 m<sup>2</sup>.

**THINNER S 6005 for cleaning tools**

**RECOMMENDED APPLICATION:**

Properly mix before use. Don't thin for brush and airless applications.

Apply 1 - 2 coats of HOSTAGRUND RUST SEAL U 2161 for total dry film thickness 10 µm. Second coat apply in 2 - 3 hours of drying (20 °C, humidity 50 - 98 %). Porous materials coat immediately after soaking.

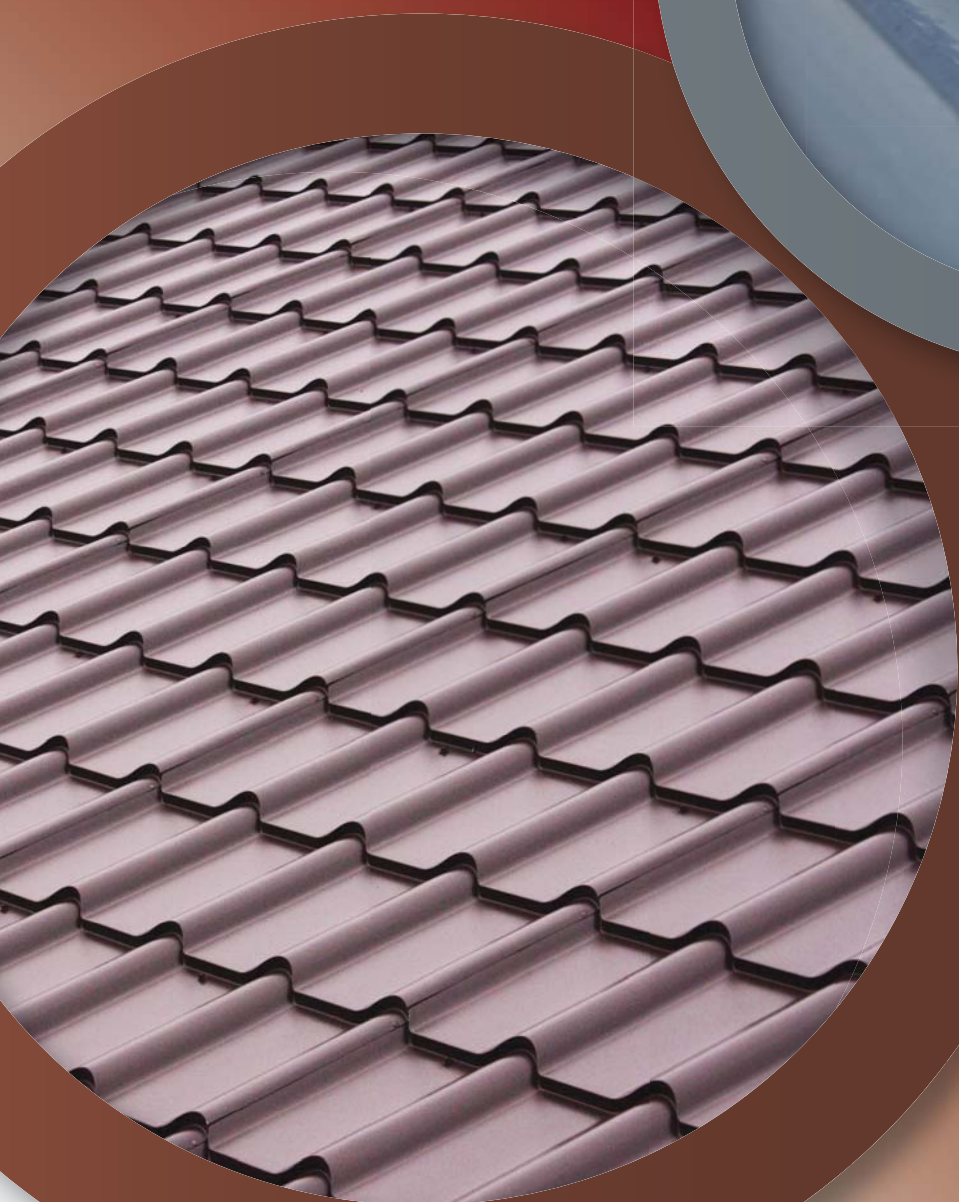
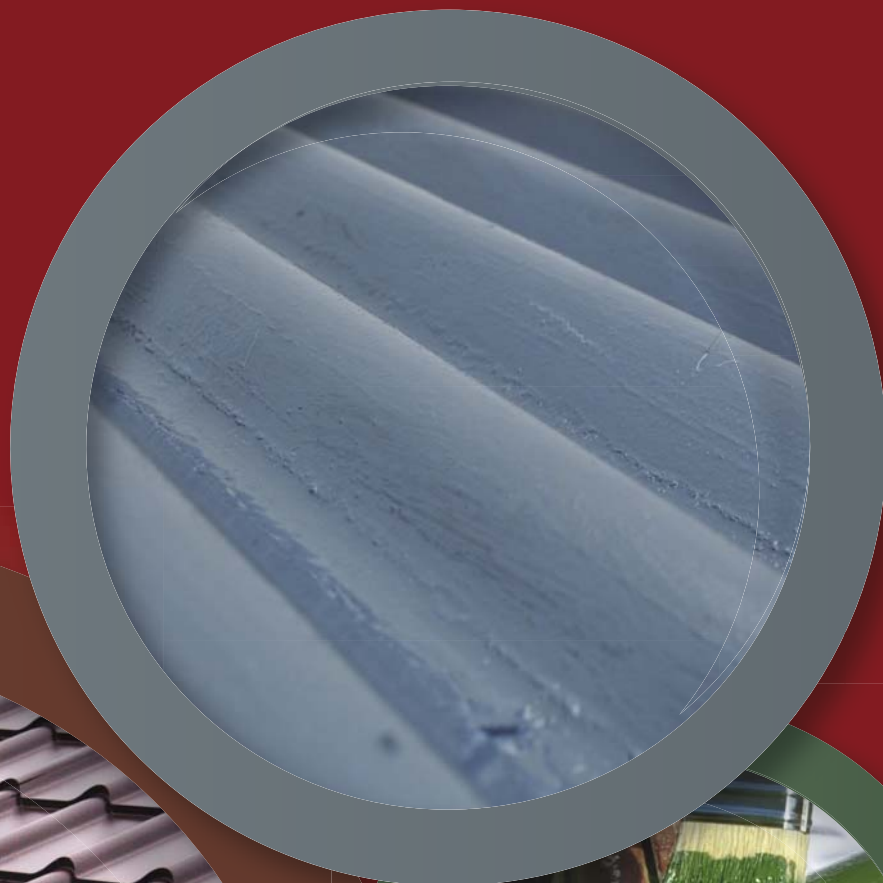
Then the technological break is necessary according conditions from 6 to 48 hours (the smaller film and the higher temperature and humidity, the shorter curing time and the technological break).

Apply 1 - 2 coats of FORMEX PRIMER FOR GALVANIZED IRON S 2003 in total film thickness 40 - 80 µm.

Apply 1 - 2 coats of INDUSTROL PROFIL U 2129 in total film thickness 40 - 80 µm.

# FEST-B

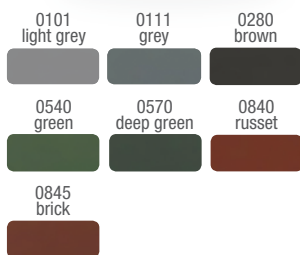
ANTICORROSIVE SINGLE COAT  
ON ROOFS AND METALS



# FEST-B

# 2v1

## S 2141 | SINGLE COAT FOR IRON



### PACK SIZES

- 0,8 kg
- 2,5 kg
- 5 kg
- 12 kg

### COVERAGE (m<sup>2</sup>/kg)

- 7 - 8

### USE

- INTERIOR
- EXTERIOR

### APPLICATION



### PRODUCT:

The solvent-based single coat uses for protective and decorative coatings in exterior: metal roofing, eaves, metal works exposed weather conditions and sunshine. It contains corrosion inhibitor and UV radiation absorber. Painting of galvanized sheet is possible after one year of weathering.

### SURFACE PREPARATION:

The surface has to be cleaned, dried and free of grease, rust and dust. Degrease by TECHNICAL BENZENE P 6402, ACETONE P 6401 or hot water with detergent. Salt residue rinse with water. Defective or poorly adhering impurities remove by sanding or scraping, thoroughly remove rust (metal brush, grindstone, rust remover). A rust remover rinses by water.

Porous materials penetrate to unify for uniform absorbency of the surface.

Previously painted surfaces clean, degrease and remove all poorly adhering old coats to the solid surface. Verify compatibility between old paint and new one. Perform a test on the area 1 m<sup>2</sup>.

**THINNER S 6006 for brush or roller, S 6001 for spraying**

### RECOMMENDED APPLICATION:

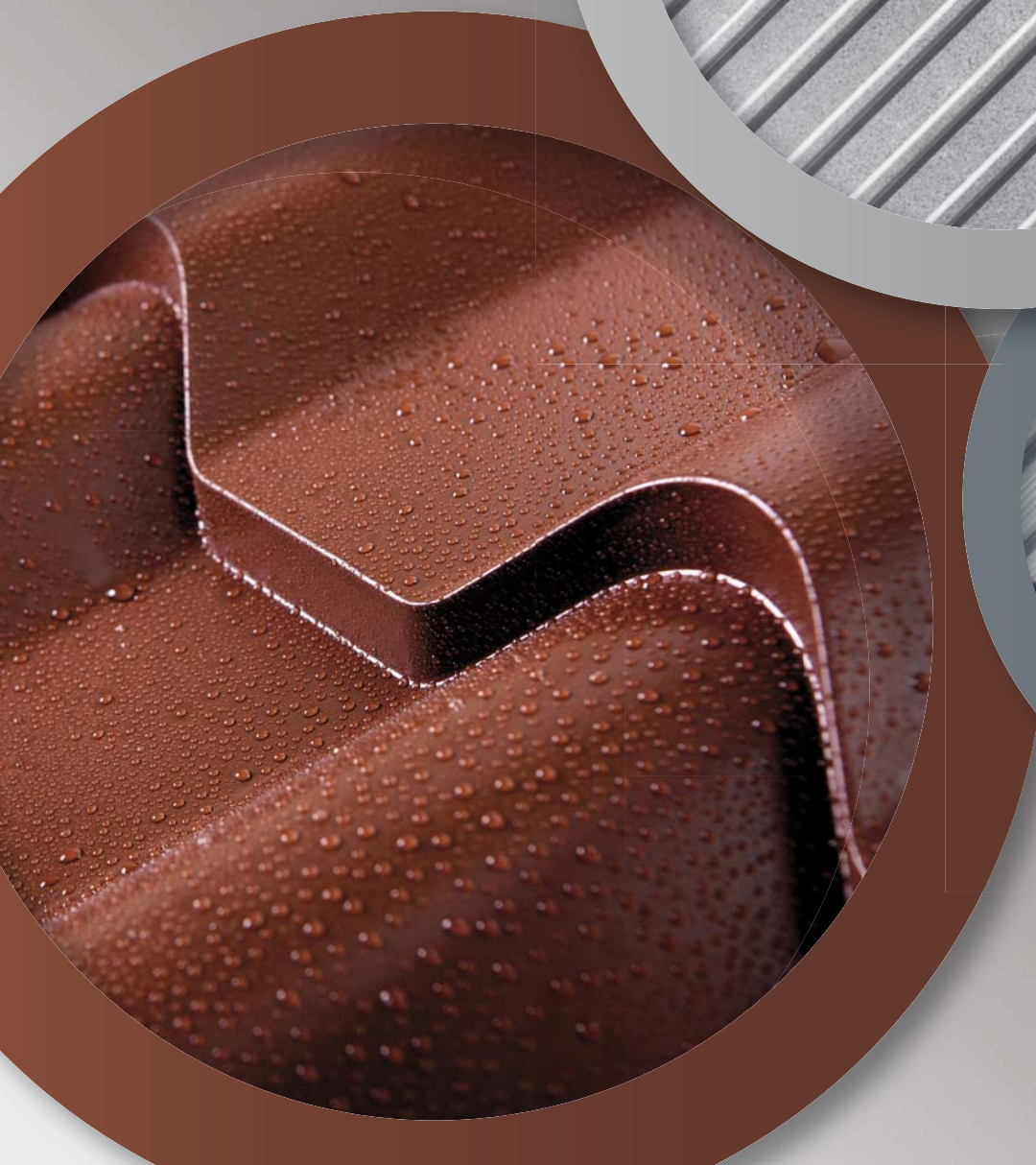
Mix properly before use.

Apply 1 - 2 coats (spraying) of FEST-B S 2141 with optimal film thickness of one coat 50 µm. Following coat applies "wet to wet" till 3 hours or after drying 24 hours.



# FORMEX

SOLVENT-BASED QUICK  
DRYING PRIMER ON LIGHT METALS



# FORMEX ZÁKLAD NA POZINK

## S 2003 | PRIMER FOR GALVANIZED IRON



0110  
grey

0600  
grey-green

0840  
russet



### PACK SIZES

0,6 l

4 l

9 l

### COVERAGE (m<sup>2</sup>/l)

10 - 12

### USE

INTERIOR

EXTERIOR

### APPLICATION



### PRODUCT:

The solvent-based primer uses on light metals, galvanized iron, both exterior and interior. It is designed under air-drying solvent based and nitrocellulose topcoats. It dries quickly. It can be used on radiators.

### SURFACE PREPARATION:

The surface has to be cleaned, dried and free of grease, rust and dust. Degrease by TECHNICAL BENZENE P 6402, ACETONE P 6401 or hot water with detergent. Salt residue rinse with water. Defective or poorly adhering impurities remove by sanding or scraping, thoroughly remove rust (metal brush, grindstone, rust remover). A rust remover rinses by water.

Previously painted surfaces clean, degrease and remove all poorly adhering old coats to the solid surface. Verify compatibility between old paint and new one. Perform a test on the area 1 m<sup>2</sup>.

### THINNER C 6000 for spraying, S 6005 for brush or roller

### RECOMMENDED APPLICATION:

Mix properly before use, thin as needed.

Apply 1 coat of FORMEX PRIMER FOR GALVANIZED IRON S 2003. It is possible recoat by nitrocellulose or solvent-based topcoat after 1 hour of drying at 20 °C (can be forced till 80 °C). Optimal film thickness is 35 - 40 µm. Apply 1 - 2 coats of INDUSTROL UNIVERSAL S 2013 or INDUSTROL PROFI U 2129, RADBAL STANDARD S 2119.

# EPOLEX

SOLVENT-BASED TWO-PACK  
EPOXY PAINTS ON HARD-WEARING  
SURFACES





# EPOLEX

# LAK NA DŘEVO

## S 1300 | TWO-PACK EPOXY VARNISH



0000  
colorless



### PACK SIZES

0,84 kg

2,5 kg

### COVERAGE (m<sup>2</sup>/kg)

11 - 13

### USE

INTERIOR

### APPLICATION



### PRODUCT:

The solvent-based epoxy varnish high gloss uses for clear and tough coating on wood, fibreboards, metal and some plastics and for penetration of absorbent materials as concrete and masonry. The varnish is resistant to many chemical substances, solvents, oils, hydroxides and fuels. It is resistant to water and humidity, withstand temperature till 120 °C. The varnish is approved for coating on food industry equipment that is in direct contact. It isn't suitable for exterior use.

### SURFACE PREPARATION:

Wood has to be cleaned, dried and free of grease, dust, humidity of wood max 12 %, excessive resin strips by THINNER C 6000. Sand in grain direction and dust off. Quality and durability of coat depends on wood treatment. Wood impregnates by thinned epoxy varnish for uniform absorbency. Than sand by a fine sandpaper, dust off and the varnish applies.

Metal has to be clean, dry and free of grease and rust, dust off.

### THINNER S 6300

### HARDENER S 7300

### RECOMMENDED APPLICATION:

The varnish mixes with hardener in weight ratio S 1300 : S 7300 = 100 : 40 and properly mix together.

**Wood:** Apply 1 coat of EPOLEX FOR WOOD S 1300 thinned for flow time 15 - 25 s at Ford cup 4. Drying time is 24 hours at room temperature. Sand by sandpaper no. 280-320 and dust off. Apply 2nd coat of S 1300, drying time 24 hours, sand with a sandpaper no. 320, dust off. Apply 3rd coat of S 1300, drying and hardening can be forced at 60 °C for 60 min, 80 °C for 45 min, 100 °C for 30 min. The coat can be sanded, polished by abrasive paste or polished.

# EPOLEX

# ZÁKLAD PROFI

## S 2300 | TWO-PACK ANTICORROSIVE EPOXY PRIMER



0110  
grey



### PACK SIZES

1,18 kg

### COVERAGE (m<sup>2</sup>/kg)

9 - 12

### USE

INTERIOR

EXTERIOR

### APPLICATION



### PRODUCT:

The solvent-based anticorrosive primer uses on metal providing excellent paint adhesion and corrosion protection. The content mix with HARDENER S 7300 before use. It doesn't run in thick build coats.

### SURFACE PREPARATION:

The surface has to be cleaned, dried and free of grease, rust and dust. Degrease by TECHNICAL BENZENE P 6402, ACETONE P 6401 or hot water with detergent. Salt residue rinse with water. Defective or poorly adhering impurities remove by sanding or scraping, thoroughly remove rust (metal brush, grindstone, rust remover). A rust remover rinses by water.

Previously painted surfaces clean, degrease and remove all poorly adhering old coats to the solid surface. Verify compatibility between old paint and new one. Perform a test on the area 1 m<sup>2</sup>.

### THINNER S 6300

### HARDENER S 7300

### RECOMMENDED APPLICATION:

Mix properly before use, add hardener in weight ratio S 2300 : S 7300 = 100 : 17, mix together and thin as needed.

**Metal:** Apply 1 coat of EPOLEX PRIMER PROFI S 2300, next coat after drying at 20 °C for 24 hours (can be forced at 60 - 100 °C for 60 - 30 minutes).

**Interior:** Apply 1 - 2 coats of EPOLEX EMAIL PROFI S 2321.

**Exterior:** Apply 1 - 2 coats of TELPUR T 300.



# EPOLEX

# EMAIL PROFI

## S 2321 | TWO-PACK EPOXY ENAMEL

### PRODUCT:

The solvent-based epoxy enamel gloss uses for: wood, metal, masonry and some plastics. The coat is resistant to water, humidity, various chemicals, especially hydroxides, oils, fuels and many solvents. It has tendency to chalking and loses gloss in exterior. The white shade 1000 is approved for coating on food industry equipment that is in direct contact. The coating could be smoothed and polished.

### SURFACE PREPARATION:

The surface has to be cleaned, dried and free of grease, dust. Metal rids of rust.

Wood sands in grain direction and dusts off, humidity of wood max 12 %, excessive resin strips by THINNER C 6000. The primer paints first.

Concrete or masonry has to be dry, compact, clean and aged (4 - 6 months) and insulated against ground humidity.

Porous materials impregnate for uniform absorbency of the surface and undercoat.

Previously painted surfaces clean, degrease and remove all poorly adhering old coats. Verify compatibility between old paint and new one. Perform a test on the area 1 m<sup>2</sup>.

### THINNER S 6300

### HARDENER S 7300

### RECOMMENDED APPLICATION:

Mix properly before use, add hardener in weight ratio S 2321 : S 7300 = 100 : 33, mix together and thin as needed.

Metal: Apply 1 coat of EPOLEX PRIMER PROFI S2300. Apply 1 - 2 coats of EPOLEX ENAMEL PROFI S 2321 after drying of the primer. Second coat applies after 24 hours (can be forced at 60 - 100 °C for 60 - 30 minutes). Minimum drying temperature is 10 °C.

### PACK SIZES

0,94 kg

### COVERAGE (m<sup>2</sup>/kg)

11 - 15

### USE

INTERIOR

### APPLICATION



1000 white



# EPOLEX

# BARVA NA VANY

## S 2321 0 | TWO-PACK EPOXY ENAMEL

### PRODUCT:

The solvent-based epoxy enamel uses for surface renovation of enamelled baths, shower trays and enclosures. Not for acrylic surfaces and exterior use.

### SURFACE PREPARATION:

The bath cleans thoroughly by cleanser to be free of grease, limescale and sediments. The surface sands by sandpaper no. 280 - 320 while wet for better adhesion. Rinse by water and let dry. Damaged spots, cracking enamel seal by epoxy putty for metal. Sand by sandpaper no. 320 - 360 while wet after drying. The surface rinses by cleanser. Remove outlet and overflow, smooth and clean places below them. Avoid dripping of water. The surface has to be matt, clean and dry. Apply tape around bath. Minimum temperature of the surface is 15 °C. A draught could bring dust and cause defects on the surface.

### THINNER S 6300

### HARDENER S 7300

### RECOMMENDED APPLICATION:

Mix properly before use, add hardener in weight ratio S 23210 : S 7300 = 100 : 33, mix together and let it defoam 15 minutes. Paint in a cross thin coat. Second coat applies after 24 hours. Contain of the can is for 2 coats of the bath.

### PACK SIZES

0,94 kg

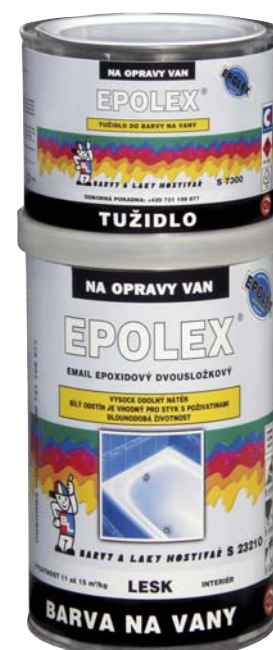
### COVERAGE (m<sup>2</sup>/kg)

11 - 15

### USE

INTERIOR

### APPLICATION



1000 white



# EPOLEX

# NA PODLAHY

## S 2380 | TWO-PACK EPOXY PAINT FOR FLOOR



0132 gravel grey  
0142 road grey

### PACK SIZES

4 kg  
A  
1 kg  
B

### COVERAGE (m<sup>2</sup>/kg)

3,5

### USE

INTERIOR

### APPLICATION



### PRODUCT:

The solvent-based epoxy paint uses for application on load concrete floors and other mineral surfaces as masonry and chipboards, especially: garages, production halls, warehouses, stores, covered terraces. It can be used as cast flooring. The finish is highly durable, resistant to many chemical substances, humidity and wear resistant. The paint doesn't contain solvents, thus volume doesn't change. It isn't resistant to weather conditions, chalking occurs..

### SURFACE PREPARATION:

The concrete substrate has to be dried, absorb, free of dust, grease, asphalt and petroleum products and aged 28 days. It is suitable to dust off by vacuum cleaner. In case of blasting, let the surface thoroughly dry. Bigger unevenness smooth. Humidity shouldn't exceed 5 %.

### THINNER S 6300

### HARDENER S 7380

### RECOMMENDED APPLICATION:

Mix properly before use, add hardener in weight ratio S 2380 : S 7380 = 100 : 25, mix together.

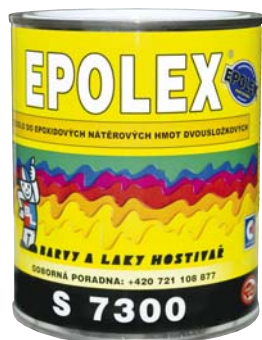
Penetration: Add thinner S 6300 while mixing in ration the hardened mixture: S 6300 = 2 : 1. In case of increased absorbability penetration repeats until smooth non-porous surface. It is possible to recoat after 2 hour of drying at 23 °C.

Paint: The hardened mixture doesn't thin. The paint pours on the penetrated floor, spreads with notched trowel or by roller with short hair and use spike roller for rolling out air bubbles. Add quartz sand on top for anti-slip effect. If high build coat paints, add 60 % of quartz sand 0.2 - 0.8 mm into the paint before mixing with hardener.

# EPOLEX

# TUŽIDLO

## S 7300 | HARDENER FOR EPOXY PAINTS



### PACK SIZES

1 kg

### PRODUCT:

The product is designed for hardening of two-pack epoxy coatings EPOLEX. Its addition differs and is mentioned in technical data sheet of individual product. Prepare such amount of mixture to apply in 8 hours.

# BETEX

SOLVENT-BASED SINGLE  
COATS FOR CONCRETE



# BETEX

# 2 v 1 NA BETON

## S 2131 | IMPREGNATION AND TOPCOAT FOR CONCRETE



0110  
grey



0440  
blue



0510  
green



0840  
russet



### PACK SIZES

0,8 kg

2 kg

5 kg

### COVERAGE (m<sup>2</sup>/kg)

7 - 8

### USE

INTERIOR

EXTERIOR

### APPLICATION



### PRODUCT:

The solvent-based paint is used for semi-matt decorative coating floors of cellars, garages, terraces, balconies, walls and columns. The product is highly durable and resistant to weather conditions, short-term resistant against some solvents as diesel, engine oil, sulphuric acid.

### SURFACE PREPARATION:

The surface has to be cleaned, compact, dried, aged (4 - 6 months) and insulated against ground humidity and free of dust, grease, asphalt and petroleum products.

Previously painted surfaces clean, degrease and remove all poorly adhering old coats.

### THINNER S 6005

### RECOMMENDED APPLICATION:

Mix properly before use, thin as needed. The paint thins in weight ratio S 2131 : S 6005 = 2 : 1 and first coat makes as penetration. Second coat applies as mixture in weight ratio S 2131 : S 6005 = 10 : 1 and after drying for 24 hours. Third coat applies without thinning or with small amount for absorbent surfaces, always after drying. Optimal film thickness is 80 µm.

# BETEX

# 2 v 1 NA BAZÉNY

## S 2852 | PENETRATION AND POLYSTYRENE PAINT FOR CONCRETE



0440  
blue



### PACK SIZES

1 kg

4 kg

9 kg

### COVERAGE (m<sup>2</sup>/kg)

5 - 6

### USE

INTERIOR

EXTERIOR

### APPLICATION



### PRODUCT:

The solvent-based polystyrene paint uses as impregnation and topcoat on concrete surfaces, masonry and plasters exposed water, vapours or high humidity. It can be used for pools and metal tanks. It isn't designed for smoothed concrete surfaces.

### SURFACE PREPARATION:

The surface has to be cleaned, compact, dried, aged (4 - 6 months) and insulated against ground humidity and free of dust, grease, asphalt and petroleum products. It is suitable to dust off by vacuum cleaner. In case of blasting, let the surface thoroughly dry. Bigger unevenness sands. Humidity shouldn't exceed 5 %.

### THINNER S6005

### RECOMMENDED APPLICATION:

Mix properly before use. It shouldn't be thinned, it is ready to use.

**Plasters, masonry, concrete:** The paint thins in weight ratio S 2852 : S 6005 = 1 : 1 and apply 1 coat of impregnation by mixture. Apply 3 - 5 coats of BETEX 2v1 FOR POOLS.

**Metal:** Apply 1 coat of FORMEX PRIMER FOR GALVANIZED IRON S 2003. The paint applies till 24 hours or after 7 days, 3 - 4 coats of BETEX 2v1 FOR POOLS, 4 hours between coats at 23 °C. The whole film thickness is 120 µm. The paint could be exposed to water after 7 days.



# UNIBAL

IMPREGNATING OIL PRIMERS



# UNIBAL

# FERMEŽ NAPOUŠTĚCÍ

## O 1000 | VARNISH PENETRATION



0000  
colorless



### PACK SIZES

0,375 l  
0,75 l  
2,5 l  
4 l  
9 l

### COVERAGE

(m<sup>2</sup>/l)

7

### USE

INTERIOR  
EXTERIOR

### APPLICATION



### PRODUCT:

The solvent-based impregnation uses for wood, plasters and other porous materials, under oil and solvent-based paints. It secures adhesion of topcoats and protects surface against weather conditions.

### SURFACE PREPARATION:

Wood has to be cleaned, dried, and smooth with humidity max. 12 %, excessive resin strips by THINNER C 6000. Quality and durability of coat depends on wood treatment.

### THINNER S 6006

### RECOMMENDED APPLICATION:

Apply 1 coat of UNIBAL PENETRATING VARNISH O 1000. The surface wipes off after 20 minutes, drying time is 48 hours. Apply 1 - 2 coats of OIL PRIMER FOR METAL O 2004, drying 48 hours at 23 °C. Apply 1 - 2 coats of INDUSTROL UNIVERSAL S 2013, 24 hours between coats at 23 °C.

# FERMEŽ LNĚNÁ

## P 6420 | THINNER FOR VARNISH PAINTS AND GLAZIER'S PUTTY



### PACK SIZES

0,375 l  
0,75 l  
2,5 l

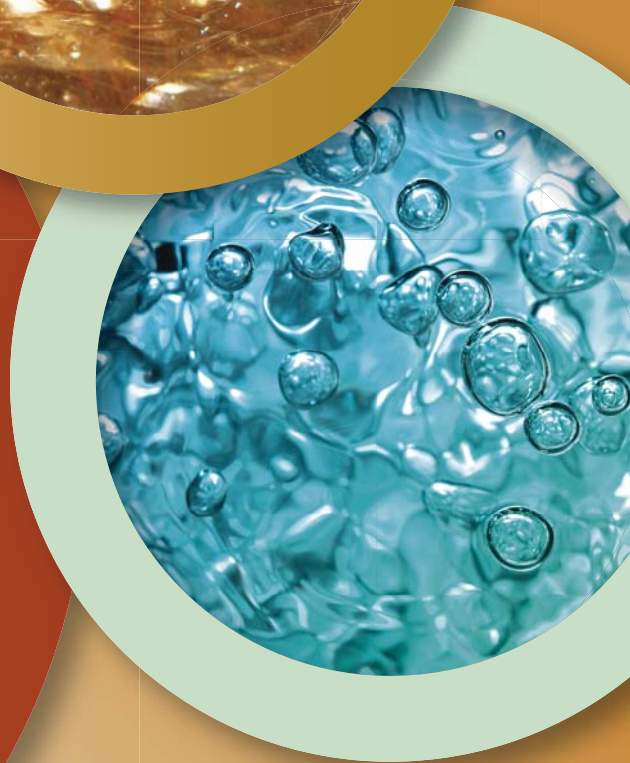
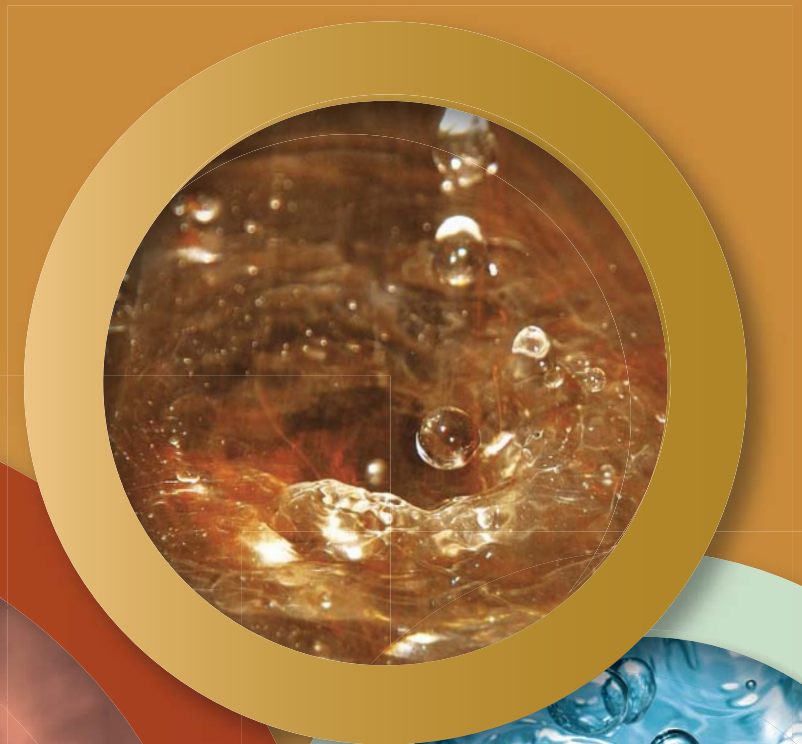
### APPLICATION



### PRODUCT:

Flaxy varnish uses as the thinner into varnish paints and oil glazier's putty.

# THINNERS AND SOLVENTS





# ŘEDIDLO

## C 6000

### C 6000 | THINNER FOR NITROCELLULOSE PAINTS



#### PACK SIZES

0,4 l  
0,7 l  
4 l  
9 l  
30 l  
160 kg

#### PRODUCT:

The mixture of organic solvents: toluene, butyl acetate, acetone, butanol thins nitrocellulose paints (LAZUROL PRAGOLESK C 1037, LAZUROL PRAGOMAT C 1038) and uses for brush or spray applications, if it isn't specified on the label. Spray application is for industrial and professional use only. It can be also used for solvent-based paints, when instruction recommends, and for stripping of excessive resins from wooden surfaces.

#### APPLICATION



# ŘEDIDLO

## S 6001

### S 6001 | THINNER FOR SPRAY APPLICATION OF SOLVENT-BASED PAINTS



#### PACK SIZES

0,4 l  
0,7 l  
4 l

#### PRODUCT:

The mixture of organic solvents: xylene, ethanol thins air-drying solvent-based paints as PRAGOPRIMER STANDARD S 2000, INDUSTROL UNIVERSAL S 2013 for spray application.

#### APPLICATION



# ŘEDIDLO

## PROFI S 6001 P

### S 6001 P | THINNER FOR SPRAY APPLICATION OF SOLVENT-BASED PAINTS



#### PACK SIZES

4 l  
9 l  
160 kg

#### PRODUCT:

The mixture of organic solvents: hydrodesulphurized petroleum heavy fraction, toluene thins air-drying solvent-based paints: PRAGOPRIMER STANDARD S 2000, INDUSTROL UNIVERSAL S 2013 for spray application in professional and industrial use only.

#### APPLICATION





# ŘEDIDLO

## S 6003

### S 6003 | THINNER FOR BAKING PAINTS

#### PRODUCT:

The mixture of organic solvents: xylene, butanol thins baked paints and varnishes: S 2053, S 1903, S 1942, if it isn't recommended otherwise.

#### PACK SIZES

- 0,4 l
- 0,7 l
- 4 l
- 9 l
- 160 kg

#### APPLICATION



# ŘEDIDLO

## S 6005

### S 6005 | THINNER FOR SOLVENT-BASED PAINTS

#### PRODUCT:

The mixture of Xylene isomers thins solvent-based paints (S 2003, S 2160, S 2820) and uses for brush, spray, roller and dip applications, if it isn't recommended otherwise.

#### PACK SIZES

- 0,4 l
- 0,7 l
- 4 l
- 9 l
- 160 kg

#### APPLICATION



# ŘEDIDLO

## S 6006

### S 6006 | THINNER FOR OIL AND SOLVENT-BASED PAINTS

#### PRODUCT:

The mixture of organic solvents: hydrodesulphurized petroleum heavy fraction, xylene, ethyl benzene, aromatic and C9 hydrocarbons thins oil and air-drying solvent-based paints (S 2000, S 2013, S 2177) and uses for brush, spray, roller and dip applications, if it isn't recommended otherwise.

#### PACK SIZES

- 0,4 l
- 0,7 l
- 4 l
- 9 l
- 30 l
- 150 kg

#### APPLICATION



# ŘEDIDLO

## S 6300

### S 6300 | THINNER FOR TWO-PACK EPOXY PAINTS



#### PACK SIZES

- 0,4 l
- 0,7 l
- 4 l
- 9 l
- 160 kg

#### PRODUCT:

The mixture of organic solvents: Xylene, ethyl benzene, butanol, butyl acetate, 2-butoxyethan-1-ol thins epoxy paints (EPOLEX) and uses for cleaning tools.

#### APPLICATION



# ŘEDIDLO

## C 6600

### C 6600 | UNIVERSAL THINNER FOR PAINTS



#### PACK SIZES

- 0,4 l
- 0,7 l
- 4 l

#### PRODUCT:

The mixture of organic solvents: butyl acetate, xylene, butanol, toluene thins solvent-based, nitrocellulose and epoxy paints. Spray application is for industrial and professional use only.

#### APPLICATION



# ŘEDIDLO

## P 6401

### P 6401 | ACETONE



#### PACK SIZES

- 0,4 l
- 0,7 l
- 4 l
- 9 l
- 150 kg

#### PRODUCT:

The solvent thins nitrocellulose glues.

#### APPLICATION



# BENZÍN TECHNICKÝ

## P 6402

### P 6402 | BENZINE TECHNICAL GRADE

**PRODUCT:**

The solvent uses for cleaning metal, in lighters and blowtorches.

**PACK SIZES**

- 0,4 l
- 0,7 l
- 4 l
- 9 l
- 150 kg

**APPLICATION**



# PETROLEJ

## P 6404

### P 6404 | KEROSENE

**PRODUCT:**

The solvent consists of linear and cyclic hydrocarbons C11-14 with less 2 % of aromatic uses for lightening in oil lamps.

**PACK SIZES**

- 0,4 l
- 0,7 l
- 4 l
- 9 l
- 150 kg



# TOLUEN

## P 6406

### P 6406 | TOLUENE

**PRODUCT:**

The solvent thins chlorinated rubbers and rubber adhesives. For industrial use only!

**PACK SIZES**

- 4 l
- 9 l
- 150 kg

**APPLICATION**



# TOLUEN SMĚS

## P 6407

### P 6407 | TOLUENE MIXTURE



#### PACK SIZES

0,4 l

0,7 l

4 l

9 l

#### APPLICATION



#### PRODUCT:

The mixture of organic solvents: toluene, low boiling hydrogenated gasoline uses for cleaning and degreasing of surfaces before using of adhesives. Thinning of paints is for professional and industrial use only.

# BENZÍNOVÝ ČISTIČ

## P 6411

### P 6411 | BENZINE TECHNICAL GRADE CLEANER



#### PACK SIZES

0,4 l

0,7 l

4 l

9 l

150 kg

#### APPLICATION



#### PRODUCT:

The mixture of organic solvents: low boiling hydrogenated gasoline, ethanol and toluene uses for degreasing of metal.

# LÍH TECHNICKÝ

## P 6413

### P 6413 | TECHNICAL ALCOHOL



#### PACK SIZES

0,4 l

0,7 l

4 l

9 l

150 kg

#### APPLICATION



#### PRODUCT:

The solvent uses for thinning of alcohol paints, for cleaning and in alcohol cookers.



# REMAL

IMPREGNATING PRIMERS,  
INTERIOR WALL AND FUNCTIONAL  
PAINTS



# REMAL

# PENETRACE AKRYL. UNIVERZÁLNÍ

## V 1307 | PENETRATING PRIMER



### PACK SIZES

1 kg

5 kg

10 kg

### PRODUCT:

The water-based acrylic penetration uses as primer on porous surfaces (plasters, wood). The primer reduces and unifies substrate absorbency, fixes the surface and improves adhesion of interior wall and latex paints.

### SURFACE PREPARATION:

The surface has to be cleaned, dried and aged.

### COVERAGE (m<sup>2</sup>/kg)

5 - 30

### RECOMMENDED APPLICATION:

The penetrating primer thins by water in ratio 1 part of the penetration and up to 3 parts of water depending on the surface absorbency. Apply 1 - 2 coats. The paint applies after drying.

### USE

INTERIOR

EXTERIOR

### APLICACION



# REMAL

# PENETRACE AKRYL. HLOUBKOVÁ

## V 1308M | DEEP-PENETRATING PRIMER



### PACK SIZES

1 kg

5 kg

### PRODUCT:

The water-based acrylic deep-penetrating primer reduces and unifies substrate absorbency, fixes the surface and improves adhesion of plasters, facades, before tiling and paving, self-levelling, local repairs of concrete floors. It has small particles, thus deeply penetrates the surface.

### COVERAGE (m<sup>2</sup>/kg)

5 - 30

### SURFACE PREPARATION:

The surface has to be cleaned, dried and aged.

### RECOMMENDED APPLICATION:

The deep-penetrating primer uses without thinning for very absorbent surfaces, it thins for porous 1 : 3 (1 part of primer to 3 parts of water), it thins for low absorbent 1 : 5 (1 part of primer to 5 parts of water). It applies in 2 coats by brush or spray. Apply paint when the surface dries thoroughly.

### USE

INTERIOR

EXTERIOR

### APLICACION



# REMAL

# STANDARD

## R. SP | WHITE INTERIOR PAINT

### PRODUCT:

The water-based interior paint is among classic natural kaolin type. It has exceptional opacity, permeability and durability with whiteness 82 %. It uses for painting on: plasters, concrete, drywalls, cement boards, chipboards and restoration plasters in interior. Wet abrasion resistance class 5 (CSN EN ISO 11998, classification EN 13300)

### SURFACE PREPARATION:

Smooth all loose, defective paint and thick coatings. Wash the surface to remove dirt, grease and dusty residue. Defects and cracks fill by REMAL SPATULA, acrylic putty uses for bigger one. Dirty spots cover by REMAL STAIN-STOP. The surface, especially absorbent and dusting, penetrates by REMAL, BARLET and SOICRAT penetrating primers. It is easy to paint on dry and smooth surfaces. Temperature of the surface must be above 5 °C.

### RECOMMENDED APPLICATION:

Add max 0.4 l (40 %) of water to 1 kg of the paint for 1st coat and mix properly. 2nd coat with additional max 0.3 l (30 %) of water to 1 kg of the paint. It applies by brush, roller or spray. Following coats apply when the surface dries thoroughly.

### TINTING:

The paint can be tinted by colour pastes: REMAKOL V 3502, REMAL V 3500P.

### PACK SIZES

- 1 kg
- 4 kg
- 6,5+1 kg
- 13+2 kg
- 22+3 kg
- 36+4 kg

### COVERAGE (m<sup>2</sup>/kg)

up to 13

### USE

INTERIOR

### APPLICATION



### TINTING



# REMAL

# PLUS

## R. PP | WHITE INTERIOR PAINT

### PRODUCT:

The water-based interior paint is among natural type. It has exceptional opacity, permeability and durability with whiteness 86 %. It uses for painting on: plasters, concrete, drywalls, cement boards, chipboards and restoration plasters in interior. Wet abrasion resistance class 5 (CSN EN ISO 11998, classification EN 13300)

### SURFACE PREPARATION:

Smooth all loose, defective paint and thick coatings. Wash the surface to remove dirt, grease and dusty residue. Defects and cracks fill by REMAL SPATULA, acrylic putty uses for bigger one. Dirty spots cover by REMAL STAIN-STOP. The surface, especially absorbent and dusting, penetrates by REMAL, BARLET and SOICRAT penetrating primers. It is easy to paint on dry and smooth surfaces. Temperature of the surface must be above 5 °C.

### RECOMMENDED APPLICATION:

Add max 0.4 l (40 %) of water to 1 kg of the paint for 1st coat and mix properly. 2nd coat with additional max 0.3 l (30 %) of water to 1 kg of the paint. It applies by brush, roller or spray. Following coats apply when the surface dries thoroughly.

### TINTING:

The paint can be tinted by colour pastes: REMAKOL V 3502, REMAL V 3500P.

### PACK SIZES

- 1 kg
- 4 kg
- 6,5+1 kg
- 13+2 kg
- 22+3 kg
- 36+4 kg

### COVERAGE (m<sup>2</sup>/kg)

up to 13

### USE

INTERIOR

### APPLICATION



### TINTING



# REMAL

# PROFI

## R. UN | WHITE INTERIOR PAINT



### PACK SIZES

- 1 kg
- 3 kg
- 4 kg
- 5 kg
- 6,5+1 kg
- 10 kg
- 13+2 kg
- 22+3 kg
- 36+4 kg

### COVERAGE (m<sup>2</sup>/kg)

up to 13

### USE

INTERIOR

### APPLICATION



### TINTING



### PRODUCT:

The water-based interior paint has high opacity and durability. It is permeable, whiteness 91 %. It uses for painting on: plasters, concrete, drywalls, cement boards, chipboards and restoration plasters in interior. Wet abrasion resistance class 5 (CSN EN ISO 11998, classification EN 13300).

### SURFACE PREPARATION:

Smooth all loose, defective paint and thick coatings. Wash the surface to remove dirt, grease and dusty residue. Defects and cracks fill by REMAL SPATULA, acrylic putty uses for bigger one. Dirty spots cover by REMAL STAIN-STOP. The surface, especially absorbent and dusting, penetrates by REMAL, BARLET and SOICRAT penetrating primers. It is easy to paint on dry and smooth surfaces. Temperature of the surface must be above 5 °C.

### RECOMMENDED APPLICATION:

Add max 0.4 l (40 %) of water to 1 kg of the paint for 1st coat and mix properly. 2nd coat with additional max 0.3 l (30 %) of water to 1 kg of the paint. It applies by brush, roller or spray. Following coats apply when the surface dries thoroughly.

### TINTING:

The paint can be tinted by colour pastes: REMAKOL V 3502, REMAL V 3500P and in systems: TELURMIX, RAINBOW.

# REMAL

# EKONOMIK

## R. EK | WHITE INTERIOR PAINT



### PACK SIZES

- 1 kg
- 4 kg
- 7,5 kg
- 15 kg
- 25 kg
- 40 kg

### COVERAGE (m<sup>2</sup>/kg)

up to 11

### USE

INTERIOR

### APPLICATION



### TINTING



### PRODUCT:

The water-based interior paint has high whiteness 91 %, opacity, permeability and durability. It uses for painting on: plasters, concrete, drywalls, cement boards, chipboards and restoration plasters in interior. The paint is based on natural calcite that allows multiple recoat and improves drying. Wet abrasion resistance class 5 (CSN EN ISO 11998, classification EN 13300).

### SURFACE PREPARATION:

Smooth all loose, defective paint and thick coatings. Wash the surface to remove dirt, grease and dusty residue. Defects and cracks fill by REMAL SPATULA, acrylic putty uses for bigger one. Dirty spots cover by REMAL STAIN-STOP. The surface, especially absorbent and dusting, penetrates by REMAL, BARLET and SOICRAT penetrating primers. It is easy to paint on dry and smooth surfaces. Temperature of the surface must be above 5 °C.

### RECOMMENDED APPLICATION:

Add max 10 - 20 % of water, mix properly and apply 2 coats. It applies by brush, roller or spray. Following coats apply when the surface dries thoroughly.

### TINTING:

The paint can be tinted by colour pastes: REMAKOL V 3502, REMAL V 3500P.



# REMAL

# EXPERT

## R. EP | BRILLIANT WHITE INTERIOR PAINT

### PRODUCT:

The water-based interior paint is brilliant white and makes silk finish. It has excellent opacity, permeability, durability and whiteness 92 %. It uses for painting on: plasters, concrete, drywalls, cement boards, chipboards and restoration plasters in interior. Wet abrasion resistance class 5 (CSN EN ISO 11998, classification EN 13300).

### SURFACE PREPARATION:

Smooth all loose, defective paint and thick coatings. Wash the surface to remove dirt, grease and dusty residue. Defects and cracks fill by REMAL SPATULA, acrylic putty uses for bigger one. Dirty spots cover by REMAL STAIN-STOP. The surface, especially absorbent and dusting, penetrates by REMAL, BARLET and SOICRAT penetrating primers. It is easy to paint on dry and smooth surfaces. Temperature of the surface must be above 5 °C.

### RECOMMENDED APPLICATION:

Add max 10-20 % of water, mix properly and apply 2 coats. It applies by brush, roller or spray. Following coats apply when the surface dries thoroughly.

### TINTING:

The paint can be tinted by colour pastes: REMAKOL V 3502, REMAL V 3500P.

### PACK SIZES

- 4 kg
- 6,5+1 kg
- 15+3 kg
- 22+3 kg
- 36+4 kg

### COVERAGE (m<sup>2</sup>/kg)

up to 11

### USE

INTERIOR

### APPLICATION



### TINTING



# REMAL

# SNĚHOBÍLÝ

## R. SNP | SNOW WHITE INTERIOR PAINT

### PRODUCT:

The water-based interior paint has high whiteness. It has exceptional opacity, permeability and durability with whiteness 93 %. It uses for painting on: plasters, concrete, drywalls, cement boards, chipboards and restoration plasters in interior. Wet abrasion resistance class 5 (CSN EN ISO 11998, classification EN 13300).

### SURFACE PREPARATION:

Smooth all loose, defective paint and thick coatings. Wash the surface to remove dirt, grease and dusty residue. Defects and cracks fill by REMAL SPATULA, acrylic putty uses for bigger one. Dirty spots cover by REMAL STAIN-STOP. The surface, especially absorbent and dusting, penetrates by REMAL, BARLET and SOICRAT penetrating primers. It is easy to paint on dry and smooth surfaces. Temperature of the surface must be above 5 °C.

### RECOMMENDED APPLICATION:

Add max 10-20 % of water, mix properly and apply 2 coats. It applies by brush, roller or spray. Following coats apply when the surface dries thoroughly.

### TINTING:

The paint can be tinted by colour pastes: REMAKOL V 3502, REMAL V 3500P.

### PACK SIZES

- 1 kg
- 4 kg
- 6,5+1 kg
- 13+2 kg
- 22+3 kg
- 36+4 kg

### COVERAGE (m<sup>2</sup>/kg)

up to 11

### USE

INTERIOR

### APPLICATION



### TINTING



## S | WHITE INTERIOR PAINT FOR DRYWALLS



### PACK SIZES

- 1 kg
- 4 kg
- 7,5 kg
- 15 kg
- 40 kg

### COVERAGE (m<sup>2</sup>/kg)

up to 11

### USE

INTERIOR

### APPLICATION



### TINTING



### PRODUCT:

The water-based interior paint is washable with high volume of acrylic dispersion and uses for coating on drywalls and other surfaces: plasters, concrete, cement boards, chipboards in interior. It has exceptional opacity, permeability, durability with whiteness 92 %. Wet abrasion resistance class 3 (CSN EN ISO 11998, classification EN 13300).

### SURFACE PREPARATION:

Smooth all loose, defective paint and thick coatings. Wash the surface to remove dirt, grease and dusty residue. Defects and cracks fill by REMAL SPATULA, acrylic putty uses for bigger one. Dirty spots cover by REMAL STAIN-STOP. The surface, especially absorbent and dusting, penetrates by REMAL, BARLET and SOICRAT penetrating primers. REMAL PENETRATING PRIMER thins 1 part of it to 2 - 3 parts of water or REMAL FORTE thins 1 part of it to 1 - 2 parts of water, apply by brush. It is easy to paint on dry and smooth surfaces. Temperature of the surface must be above 5 °C.

### RECOMMENDED APPLICATION:

Add max 10 % of water, mix properly and apply 2 coats. It applies by brush, roller or spray. Following coats apply when the surface dries thoroughly.

### TINTING:

The paint can be tinted by colour pastes: REMAKOL V 3502, REMAL V 3500P.

## R. BA | INTERIOR PAINT BASE



### PACK SIZES

- BASE A
- 1 kg
- 2 kg
- 5 kg
- 10 kg
- 25 kg

### PACK SIZES

- BASE B, C
- 1 kg
- 2 kg
- 4 kg
- 8 kg
- 20 kg

### COVERAGE (m<sup>2</sup>/kg)

up to 10

### USE

INTERIOR

### APPLICATION



### TINTING



### PRODUCT:

The bases A, B, C are designed for mixing centres. The water-based paint uses for coating on: plasters, concrete, drywalls, cement boards, chipboards and restoration plasters in interior. It has excellent opacity, permeability and durability. Wet abrasion resistance class 3 (CSN EN ISO 11998, classification EN 13300).

### SURFACE PREPARATION:

Smooth all loose, defective paint and thick coatings. Wash the surface to remove dirt, grease and dusty residue. Defects and cracks fill by REMAL SPATULA, acrylic putty uses for bigger one. Dirty spots cover by REMAL STAIN-STOP. The surface, especially absorbent and dusting, penetrates by REMAL, BARLET and SOICRAT penetrating primers. It is easy to paint on dry and smooth surfaces. Temperature of the surface must be above 5 °C.

### RECOMMENDED APPLICATION:

Add water to the paint according application tool, max 10 %, mix properly. Apply 2-3 coats by brush, roller or spray. Following coats apply when the surface dries thoroughly.

### TINTING:

Different colour shades are prepared by tinting system TELURMIX and RAINBOW.

# REMAL

# VINYL MAT

## R. VI | EXTRA DURABLE INTERIOR PAINT

### PRODUCT:

The water-based premium interior wall paint has excellent opacity, whiteness, durability and satin matt finish. The finish is carefully washable. The product uses for walls and ceilings in design interiors, both living and commercial, on plasters, drywalls and similar substrates. It applies easy, it is harmless to health and ecologically safety. Wet abrasion resistance class 2 (CSN EN ISO 11998, classification EN 13300).

### SURFACE PREPARATION:

Sand all loose, defective and thick coatings. Wash the surface to remove dirt, grease and dusty residue. The surface penetrates by REMAL DEEP-PENETRATING PRIMER to fix it, unify absorbency and improve adhesion, drying time 4 hours. Defects and cracks fill by REMAL SPATULA, an acrylic putty uses for bigger one. Dirty spots cover by REMAL STAIN-STOP.

### RECOMMENDED APPLICATION:

Mix properly before use, the product is ready to use. Thin up 5 % of water in case of need. Apply by a roller REMAL VINYL with short hair. The paint has sufficient opacity in one coat. Recoat after 4 hours in case of need. Application temperature is 15 to 25 °C. Clean all dirty spots and tools by clean water immediately, dry paint removes worse.

### PACK SIZES

4 kg

7,5 kg

15 kg

### COVERAGE (m<sup>2</sup>/kg)

up to 12

### USE

INTERIOR

### APPLICATION



# REMAL

# VINYL COLOR MAT

## R. VI | EXTRA DURABLE COLOURED INTERIOR PAINT

### PRODUCT:

The water-based washable paint is supplied in ready-mix colours. It has satin finish, excellent opacity, permeability and durability. It uses for painting on: plasters, drywalls, cement boards, chipboards and restoration plasters in interior. Wet abrasion resistance class 3 (CSN EN ISO 11998, classification EN 13300).

### SURFACE PREPARATION:

Smooth all loose, defective paint and thick coatings. Wash the surface to remove dirt, grease and dusty residue. Defects and cracks fill by REMAL SPATULA, acrylic putty uses for bigger one. Dirty spots cover by REMAL STAIN-STOP. The surface, especially absorbent and dusting, penetrates by deep-penetrating primers. It is easy to paint on dry and smooth surfaces. Temperature of the surface must be above 5 °C.

### RECOMMENDED APPLICATION:

Add max 20 % of water to the paint according application, mix properly and apply 1-2 coats by brush or roller. Following coat applies when the surface dries thoroughly. Recommended thinning: for brush max 0.2 L of water (20 %) to 1 Kg of the paint, for roller max 0.1 L of water (10 %) to 1 Kg of the paint.

### PACK SIZES

0,25 kg

3,2 kg

### COVERAGE (m<sup>2</sup>/kg)

up to 12

### USE

INTERIOR

### APPLICATION



830 vine red	600 vanilla yellow	620 summer yellow	110 dove grey
240 chocolate brown	220 cinnamon brown	210 coffee brown	200 safari beige
340 lilac purple	310 lavender purple	410 pastel blue	430 azure blue
420 turquoise blue	540 emerald green	810 rosehip pink	820 coral red
640 saffron yellow	610 pastel yellow	500 spring green	510 moss green

# REMAL

# VINYL BÁZE

## R. VI | EXTRA DURABLE INTERIOR PAINT BASE



### PACK SIZES BASE A, B, C

- 1 kg
- 4 kg
- 8 kg
- 20 kg

### COVERAGE (m<sup>2</sup>/kg)

- 8 - 14

### USE

INTERIOR

### APPLICATION



### TINTING



### PRODUCT:

The bases A, B, C are designed for mixing centres. The water-based washable paint has satin finish, excellent opacity, permeability and durability. It uses for painting on: plasters, drywalls, cement boards, chipboards and restoration plasters in interior. Wet abrasion resistance class 2 (CSN EN ISO 11998, classification EN 13300).

### SURFACE PREPARATION:

Smooth all loose, defective paint and thick coatings. Wash the surface to remove dirt, grease and dusty residue. Defects and cracks fill by REMAL SPATULA, acrylic putty uses for bigger one. Dirty spots cover by REMAL STAIN-STOP. The surface, especially absorbent and dusting, penetrates by deep-penetrating primers. It is easy to paint on dry and smooth surfaces. Temperature of the surface must be above 5 °C.

### RECOMMENDED APPLICATION:

Add max 20 % of water to the paint according application, mix properly and apply 1 - 2 coats by brush, roller or spray. Following coat applies when the surface dries thoroughly. Recommended thinning: for brush max 0.2 l of water (20 %) to 1 kg of the paint, for roller max 0.1 l of water (10 %) to 1 kg of the paint.

Some deep shades based on base C (yellow, red, orange) have slightly lower opacity and 3 coats are necessary or use undercoat in similar shade based on base A or B. The temperature of the surface must be above 5 °C.

All dirty tools and places clean by water immediately! Dried paint is difficult to clean!

### TINTING:

Different colour shades are prepared by tinting system TELURMIX and RAINBOW.

# REMAL

# COLOR

## R. C | COLOURED INTERIOR PAINT



### PACK SIZES

- 4 kg
- 7,5 kg

### COVERAGE (m<sup>2</sup>/kg)

- up to 12

### USE

INTERIOR

### APPLICATION



### PRODUCT:

The water-based paint is supplied in ready-mix colours with aroma of fresh fruit. It has excellent opacity, permeability and durability. It uses for painting on: plasters, drywalls, cement boards, chipboards and restoration plasters in interior. Wet abrasion resistance class 5 (CSN EN ISO 11998, classification EN 13300).

### SURFACE PREPARATION:

Smooth all loose, defective paint and thick coatings. Wash the surface to remove dirt, grease and dusty residue. Defects and cracks fill by REMAL SPATULA, acrylic putty uses for bigger one. Dirty spots cover by REMAL STAIN-STOP. The surface, especially absorbent and dusting, penetrates by REMAL, BARLET and SOICRAT penetrating primers. It is easy to paint on dry and smooth surfaces. Temperature of the surface must be above 5 °C.

### RECOMMENDED APPLICATION:

Add 0.1 - 0.2 parts of water to 1 part of the paint and mix properly. Apply 1 - 2 coats by brush, roller or spray. Lighter shades prepare by mixing with white REMAL COLOR or REMAL SNOW WHITE. Following coats apply when the surface dries thoroughly.





# REMAL

# SILIKÁT

## R. SV | SILICATE INTERIOR PAINT

### PRODUCT:

The water-based silicate interior paint has excellent permeability and uses for painting of different substrates: plasters, concrete, aerated concrete, drywalls, chipboards etc. in interiors. Great permeability determines for painting of redevelopment plasters.

### SURFACE PREPARATION:

The surface has to be cleaned, dried and aged, rid of grease and bacteria, fungi and algae. Sand or scrape all loose, defective and thick coatings. Absorbent substrates penetrate by BARLET PENETRATION SILICATE, drying time 24 hours.

Unsuitable surfaces are incoherent, repaired by gypsum and non-mineral. Application temperature is 8 to 25 °C. Household equipment covers before painting, dry paint removes worse.

### RECOMMENDED APPLICATION:

Mix properly before use. Thin up 10 % of water according application. Paint in 2 coats by a brush or a roller, 24 hours between coats.

### PACK SIZES

7,5 kg

18 kg

### COVERAGE (m<sup>2</sup>/kg)

5

### USE

INTERIOR

### APPLICATION



# REMAL

# PROTIPLÍŠŇOVÝ

## R. EX | INTERIOR FUNGICIDAL PAINT

### PRODUCT:

The water-based paint prevents against mould growth: Penicillium Glaucum, Chaetomium Globosum, Aspergillus Niger, Alternaria Tenuis, Aureobasidium Pullulans, Sclerophona Pityophila. It also counteracts: fungi, yeasts, algae and bacteria. It has exceptional opacity, permeability, and durability with whiteness 91 %. It uses for fungicidal painting on: plasters, concrete, drywalls, cement boards in interior. Wet abrasion resistance class 5 (CSN EN ISO 11998, classification EN 13300).

Follow the rules for safe use of the product. Read carefully the text on the label and added information before use.

### SURFACE PREPARATION:

Treat places with mould by REMAL SANAL V 1405 and scrape them. Smooth all loose, defective paint and thick coatings. Wash the surface to remove dirt, grease and dusty residue. Defects and cracks fill by REMAL SPATULA, acrylic putty uses for bigger one. Dirty spots cover by REMAL STAIN-STOP. The surface, especially absorbent and dusting, penetrates by REMAL, BARLET and SOICRAT penetrating primers. It is easy to paint on dry and smooth surfaces. Temperature of the surface must be above 5 °C.

### RECOMMENDED APPLICATION:

Add max 0.4 l (40 %) of water to 1 kg of the paint for 1st coat and mix properly. 2nd coat with additional max 0.3 l (30 %) of water to 1 kg of the paint. It applies by brush, roller or spray. Following coats apply when the surface dries thoroughly.

### TINTING:

The paint can be tinted by colour pastes: REMAKOL V 3502, REMAL V 3500P.

### PACK SIZES

1 kg

4 kg

7,5 kg

15 kg

40 kg

### COVERAGE (m<sup>2</sup>/kg)

up to 13

### USE

INTERIOR

### APPLICATION



### TINTING



## R. AK | WHITE INTERIOR PAINT WITH BACTERICIDAL AND FUNGICIDAL RESISTANCE



### PACK SIZES

15 kg

### COVERAGE (m<sup>2</sup>/kg)

up to 10

### USE

INTERIOR

### APPLICATION



### TINTING



### PRODUCT:

The water-based interior paint resists moulds and bacteria tested on *Penicillium Chrysogenum*, *Aspergillus Niger* and bacteria *Escherichia Coli* a *Staphylococcus Aureus*. The paint is designed for hospitals, food productions, where resistance against moulds and bacteria is asked. It has excellent opacity and durability.

### SURFACE PREPARATION:

Treat places with mould by REMAL SANAL V 1405 and scrape it. Smooth all loose, defective paint and thick coatings. Wash the surface to remove dirt, grease and dusty residue. Defects and cracks fill by REMAL SPATULA, acrylic putty uses for bigger one. Dirty spots cover by REMAL STAIN-STOP. The surface, especially absorbent and dusting, penetrates by deep-penetrating primers. It is easy to paint on dry and smooth surfaces. Temperature of the surface must be above 5 °C.

### RECOMMENDED APPLICATION:

Add water to the paint according application tool, max 10 %, mix properly. It applies by brush, roller or spray in 2 - 3 coats, between coats 4 hours.

### TINTING:

The paint can be tinted by some colour pastes: REMAKOL EX-S and inorganic pigments.

## R. TKO | INTERIOR THERMO-INSULATING AND ANTI-CONDENSATING PAINT



### PACK SIZES

4 kg

### COVERAGE (m<sup>2</sup>/kg)

2 - 3

### USE

INTERIOR

### APPLICATION



### TINTING



### PRODUCT:

The water-based paint increases thermal insulation and prevents condensation, it has great opacity. It uses for painting on: plasters, concrete, wood, chipboards, cement boards, drywalls in interior. It can be also used as topcoat on metal. Wet abrasion resistance class 2 (CSN EN ISO 11998, classification EN 13300).

### SURFACE PREPARATION:

Smooth all loose, defective paint and thick coatings. Wash the surface to remove dirt, grease and dusty residue. Defects and cracks fill by REMAL SPATULA, acrylic putty uses for bigger one. Dirty spots cover by REMAL STAIN-STOP. The surface, especially absorbent and dusting, penetrates by REMAL, BARLET and SOICRAT penetrating primers. It is easy to paint on dry and smooth surfaces. Temperature of the surface must be above 5 °C.

### RECOMMENDED APPLICATION:

Mix properly before use. The paint is ready to use, it shouldn't be thinned. Add max 0.1 l of water (10 %) to 1 kg of the paint for easy painting. Apply 2 - 3 coats by roller or brush in interval 4 hours between coats. All dirty tools and places clean immediately! Dried paint is difficult to clean!

### TINTING:

The paint can be tinted by colour pastes: REMAKOL V 3502, REMAL V 3500P.

# REMAL

# FLEK-STOP

## R. FS | STAIN-STOP

### PRODUCT:

The water-based primer covers and isolates stains (smoke, nicotine, leaking water, crayons, coffee and grease) in interior and exterior. It prevents the migration of stains through the finish paint film. It is easy to recoat by interior paints.

### SURFACE PREPARATION:

Smooth all loose, defective paint and thick coatings. Wash the surface to remove dirt, grease and dusty residue. Defects and cracks fill by REMAL SPATULA, acrylic putty uses for bigger one. Dirty spots cover by REMAL STAIN-STOP. The surface, especially absorbent and dusting, penetrates by REMAL, BARLET and SOICRAT penetrating primers. It is easy to paint on dry and smooth surfaces. Temperature of the surface is 10 - 25 °C.

### RECOMMENDED APPLICATION:

Apply 1 - 2 coats by brush or roller. Thin by water max 10 % (thinning lower isolation). It dries 2 - 4 hours between coats at 20 °C (lower temperature and high humidity, slower drying). Apply 2 coats by interior paint REMAL when dries.

### PACK SIZES

1 kg

5 kg

### COVERAGE (m<sup>2</sup>/kg)

up to 8

### USE

INTERIOR

EXTERIOR

### APPLICATION



# REMAL

# STRUKTURA

## R. ST | INTERIOR PAINT WITH GRAINS UP TO 0.5 MM

### PRODUCT:

The water-based interior paint contains grains up to 0.5 mm. It imitates plaster surface and uses for painting on plasters, concrete, drywalls, cement boards, chipboards and restoration plasters in interior. It has exceptional opacity, permeability, durability with whiteness 91 %.

### SURFACE PREPARATION:

Smooth all loose, defective paint and thick coatings. Wash the surface to remove dirt, grease and dusty residue. Defects and cracks fill by REMAL SPATULA, acrylic putty uses for bigger one. Dirty spots cover by REMAL STAIN-STOP. The surface, especially absorbent and dusting, penetrates by REMAL, BARLET and SOICRAT penetrating primers. It is easy to paint on dry and smooth surfaces. Temperature of the surface must be above 5 °C.

### RECOMMENDED APPLICATION:

Add max 5 % of water, mix properly and apply 1 - 2 coats. It applies by brush, roller or spray. Following coats apply when the surface dries thoroughly.

### TINTING:

The paint can be tinted by colour pastes: REMAKOL V 3502, REMAL V 3500P.

### PACK SIZES

1 kg

4 kg

7,5 kg

15 kg

### COVERAGE (m<sup>2</sup>/kg)

up to 4

### USE

INTERIOR

### APPLICATION



# REMAL

# FASÁDA

## V 4016 | FAÇADE PAINT



### PACK SIZES

- 1 kg
- 4 kg
- 7,5 kg
- 15 kg
- 40 kg

### COVERAGE (m<sup>2</sup>/kg)

- up to 5

### USE

- INTERIOR
- EXTERIOR

### APPLICATION



### TINTING



### PRODUCT:

The water-based white acrylic paint uses for coating on lime-concrete plasters, masonry, concrete panels, brizolit and chipboards. It is washable, permeable with high opacity and it resists weather conditions.

### SURFACE PREPARATION:

The surface has to be dried and aged to prevent colour changing, binder saponification, reduction of the paint adhesion and lime efflorescence on the coat surface. Remove moulds and algae. New plaster needs to be aged 4 weeks. It could be forced when local repairs by a salt REMAL TELSAL V 2026. The porous, dusting surfaces penetrate (fix) by impregnating primer REMAL, BARLET or SOICRAT.

### RECOMMENDED APPLICATION:

Apply 2 coats thinned by small amount of water with interval 4 - 6 hours between coats. 1st coat applies by brush, 2nd by brush or roller. The temperature of the surface and environment needs to be above 8 °C.

# REMAL TEKUTÁ TÓNOVACÍ BARVA

## V 3500 P | LIQUID TINTING PAINT



### PACK SIZES

- 0,25 kg
- 0,5 kg
- 1 kg

### USE

- INTERIOR

### PRODUCT:

The water-based tinting paste uses for tinting of interior paints. Colours are stable and have high colouring ability. Colours: black, brown, ochre and russet can be used in exterior too.

### RECOMMENDED APPLICATION:

Mix properly before use. Add amount of paste according swatch and is better to mix it in water for thinning than the mixture pour in the paint. Check the shade by reference coat.



# REMAL

# EFEKT

## R. EF | DECORATIVE GLOSSY PAINT

### PRODUCT:

The water-based paint has fancy metal and pearl finish. It uses on: plasters, wooden surfaces, drywalls, both interior and exterior. Make a decorative roller and a painting line. The effect depends on a technique, a shade of the surface and imagination of a maker. It can be used for limited time outside. The paint can be tinted by small amount of coloured paste REMAL V 3500P and REMAKOL EX-S for more combinations.

### SURFACE PREPARATION:

Smooth all loose, defective paint and thick coatings. Wash the surface to remove dirt, grease and dusty residue. Defects and cracks fill by REMAL SPATULA, acrylic putty uses for bigger one. Dirty spots cover by REMAL STAIN-STOP. The surface, especially absorbent and dusting, penetrates by REMAL, BARLET and SOICRAT penetrating primers. It is easy to paint on dry and smooth surfaces. Temperature of the surface must be above 5 °C.

Paint by REMAL or REMAL VINYL in different shade at first.

### RECOMMENDED APPLICATION:

Mix properly before use. Slight sediment isn't the problem. The paint thins according application 1 part of the paint and 0.1 part of water. The paint applies by brush, decorative roller with short hair, sponge, spray, piece of cloth and painting template. Surrounding places protect against dirt. Dirt places clean immediately, because dried paint is difficult to clean. Optimal temperature for application is 15 - 25 °C.

### PACK SIZES

0,4 kg

### COVERAGE (m<sup>2</sup>/kg)

up to 7

### USE

INTERIOR

### APPLICATION



# REMAL

# TELSAL

## V 2026 | SALT FOR NEUTRALIZATION

### PRODUCT:

The salt uses for neutralization of fresh dried plasters against efflorescence of soluble salts and lime, for restoration of smoke stains and leaked water stains.

**Follow the rules for safe use of the product. Read carefully the text on the label and added information before use.**

### SURFACE PREPARATION:

The surface has to be dried, free of grease, dust. Remove all loose, defective paints and thick coats.

### RECOMMENDED APPLICATION:

The salt dissolves in water in ratio: 1 kg of it to 5 kg of water and it applies on places. If old paints swell, remove them. Use only adequate amount of solution not to run and prevent creating of glossy spots that are difficult to recoat and could swell following paint! Then apply paints when it dries thoroughly. Don't use it under silicate paints.

### PACK SIZES

1 kg

3 kg

### COVERAGE (m<sup>2</sup>/kg)

40

### USE

INTERIOR

EXTERIOR

### APPLICATION



# REMAL

# SANAL NA ZDIVO

## V 1406 | FUNGICIDAL AND PROTECTING CONCENTRATE



### PACK SIZES

0,9 kg

5 kg

### COVERAGE (m<sup>2</sup>/kg)

up to 70

### USE

INTERIOR

EXTERIOR

### APPLICATION



### PRODUCT:

The water-based concentrate uses for restoration and for protection of plasters, masonry, stones, concrete and other building materials against moulds, fungi, algae, lichens and bacteria.

**Follow the rules for safe use of the product. Read carefully the text on the label and added information before use.**

### SURFACE PREPARATION:

Places secure against raising damp, water leaking and insulate them.

### RECOMMENDED APPLICATION:

The product thins by water in ratio 1 : 9, 1 : 5 for masonry. Places coat by dissolved solution with brush and scrape them while wet. Coat repeats once or twice. Total consumption of dissolved solution is 250 g/m<sup>2</sup>. It is suitable to use REMAL INTERIOR FUNGICIDAL PAINT after it dries thoroughly.

# REMAL

# STĚRKA

## V 5010 | SPATULA



### PACK SIZES

1,5 kg

7,5 kg

15 kg

30 kg

### COVERAGE (kg/m<sup>2</sup>)

1,7 - 1,9

### USE

INTERIOR

### APPLICATION



### PRODUCT:

The water-based spatula uses for a surface levelling of walls and ceilings on plasters, masonry, drywalls in interior. It isn't designed for joint covering. It has high whiteness, spreads and sands easy.

### SURFACE PREPARATION:

The surface has to be dried, aged and rid of all loose particles. Fix it by penetrating primer REMAL, BARLET or SOICRAT. The temperature of the surface has to be 5 to 28 °C.

### RECOMMENDED APPLICATION:

Spread max twice with thickness 1.5 - 2 mm of each by stainless steel trowel.

The surface sands when dries thoroughly by grinding grid or sandpaper depending on temperature and humidity, at least 24 hours.

# REMAL

# ŠTUKOVÁ HMOTA

## STUCCO

### PRODUCT:

The water-based stucco uses for finishing of walls and ceilings on mortar, concrete panels, aerated concrete blocks, drywalls, especially suitable for reconstruction of prefab flats after wallpaper removing and wall repairs before painting. It could substitute painting with its whiteness in less demanding rooms.

### SURFACE PREPARATION:

The surface prepares in usual manner: joints cover, protrusions remove and dust off. Bare metal parts protect by anticorrosive primer. Smooth concrete surfaces, aerated concretes and drywalls penetrate by REMAL, SOICRAT penetrating primer. The surface damps.

### RECOMMENDED APPLICATION:

Mix properly before use, it could be damped by water. Spread in 1 - 5 mm (recommended 2 mm) with stainless steel trowel from bottom to top on walls. Smooth by circular movement of a foam or felt float after partial drying. The temperature of the surface has to be above 5 °C. Painting performs when aged at least 4 weeks.

### PACK SIZES

8 kg

15 kg

25 kg

40 kg

### COVERAGE

(kg/m<sup>2</sup>)

2 - 3

### USE

INTERIOR

### APPLICATION



# LATEX

LATEX PAINTS FOR INTERIOR  
AND EXTERIOR





# LATEX

# BARVA NA LAJNOVÁNÍ

## V 2021 | LINE MARKING PAINT

### PRODUCT:

The water-based white line marking paint uses on outdoor football and sport fields.

### SURFACE PREPARATION:

The surface has to be dried.

### RECOMMENDED APPLICATION:

Mix properly before use and thin according application. Recommended ratio is 1 part of paint to 1 - 2 parts of water. The paint applies on dry and mowed lawn by different type of a wheel marker, spraying, a brush or a roller.

### PACK SIZES

5 kg

10 kg

### COVERAGE

10 kg of the paint to the football field (diluting 1 : 1)

### USE

EXTERIOR

### APPLICATION



white



# LATEX

# UNIVERZÁLNÍ

## V 2020 | LATEX PAINT

### PRODUCT:

The water-based paint uses on wood, chip and fibreboards, paper, both interior and exterior. The washable finish has high whiteness and opacity. Not suitable for humid environment.

### SURFACE PREPARATION:

Too absorbent, dusting and loose surface penetrates (fixes) by penetrating primers: REMAL, BARLET or SOICRAT.

### RECOMMENDED APPLICATION:

Mix properly before use. Apply 2 coats by brush, roller or spray at the temperature 10 - 25 °C. Recoat after 4 hours.

### PACK SIZES

0,8 kg

5 kg

10 kg

15 kg

25 kg

### COVERAGE (m<sup>2</sup>/kg)

up to 8

### USE

INTERIOR

EXTERIOR

### APPLICATION



white



# LATEX

# VNITŘNÍ

## V 2064 | INTERIOR LATEX PAINT



white



### PACK SIZES

0,8 kg

5 kg

10 kg

15 kg

### COVERAGE (m<sup>2</sup>/kg)

up to 8

### USE

INTERIOR

### APPLICATION



### PRODUCT:

The water-based latex paint uses on plasters, wood, chipboard and paper. The washable finish has high whiteness and opacity. Not suitable for humid environment.

### SURFACE PREPARATION:

Too absorbent, dusting and loose surface penetrates (fixes) by penetrating primers: REMAL, BARLET or SOICRAT.

### RECOMMENDED APPLICATION:

Mix properly before use. Apply 2 coats by brush, roller or spray at the temperature 10 - 25 °C. Recoat after 4 hours.

# LATEX

# VENKOVNÍ

## V 2065 | EXTERIOR LATEX PAINT



white



### PACK SIZES

0,8 kg

5 kg

10 kg

15 kg

### COVERAGE (m<sup>2</sup>/kg)

up to 8

### USE

INTERIOR

EXTERIOR

### APPLICATION



### PRODUCT:

The water-based latex paint uses on masonry, wood, chip and fibreboards, paper. The washable finish has high whiteness and opacity. Not suitable for humid environment.

### SURFACE PREPARATION:

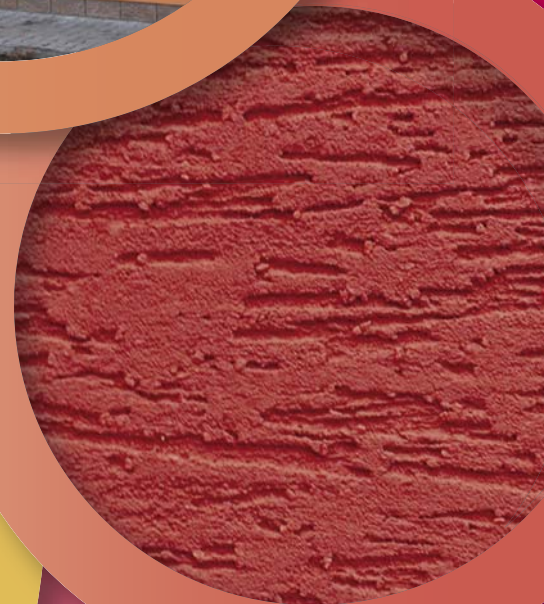
Too absorbent, dusting and loose surface penetrates (fixes) by penetrating primers: REMAL, BARLET or SOICRAT.

### RECOMMENDED APPLICATION:

Mix properly before use. Apply 2 coats by brush, roller or spray at the temperature 10 - 25 °C. Recoat after 4 hours.

# BARLET

PENETRATING PRIMERS,  
FACADE PAINTS, DECORATIVE  
PLASTERS AND MOSAICS



# BARLET PENETRACE AKRYL. UNIVERZÁLNÍ

## V 1307 | UNIVERSAL PENETRATING PRIMER



### PACK SIZES

5 kg

10 kg

### COVERAGE (m<sup>2</sup>/kg)

5 - 30

### USE

INTERIOR

EXTERIOR

### APLICACION



### PRODUCT:

The water-based acrylic penetrating primer uses on porous surfaces (plasters, wood). The primer reduces and unifies substrate absorbency, fixes the surface and improves adhesion of façade systems BARLET. It reduces consumption of finish.

### SURFACE PREPARATION:

The surface has to be cleaned, dried and aged.

### RECOMMENDED APPLICATION:

The penetrating primer thins by water in ratio 1 part of the penetration and up to 5 parts of water depending on the surface absorbency. Apply 1 - 2 coats by brush, roller or spray. The paint applies after drying.

# BARLET PENETRACE AKRYL. HLOUBKOVÁ

## V 1308 | DEEP-PENETRATING PRIMER



### PACK SIZES

5 kg

10 kg

### COVERAGE (m<sup>2</sup>/kg)

5 - 30

### USE

INTERIOR

### APLICACION



### PRODUCT:

The water-based acrylic deep-penetrating primer reduces and unifies substrate absorbency, fixes the surface and improves adhesion of plasters, facades, uses before tiling and paving, self-levelling, local repairing of concrete floors. It has small particles, thus deeply penetrates the surface.

### SURFACE PREPARATION:

The surface has to be cleaned, dried and aged.

### RECOMMENDED APPLICATION:

The deep-penetrating primer thins till ratio 1 : 5 (1 part of primer to 5 parts of water) depending on the surface absorbency. It applies in 1 - 2 coats by brush or spray. Apply paint when the surface dries thoroughly.



# BARLET ZÁKLADNÍ NÁTĚŘ NA MIKROTRHLINY

## V 4012 | MICRO CRACK FILLER UNDER FAÇADE AND INTERIOR PAINTS

### PRODUCT:

The water-based micro crack filler uses till 0.5 mm under acrylic or silicone façade paints BARLET and interior paints REMAL. It contains quartz sand with particles up 0.5 mm. The paint has structure of a fine plaster.

### SURFACE PREPARATION:

The surface has to be dried and aged, rid of loose particles and dust. Don't apply during rain, fog, strong wind and direct sunlight. Application temperature is 15 to 25 °C, not below 7 and above 30 °C when drying. Higher humidity and lower temperature affect drying time.

### RECOMMENDED APPLICATION:

Mix properly before use, the product is ready to use. Thin up 10 % of water in case of need. The paint applies by a brush into cracks. Multiply application for bigger ones, always after previous paint dries thoroughly. Crossing of painting is recommended. Recoat by a façade or an interior paint after 4 hours. Clean all dirty spots immediately, dried paint removes worse. Don't use spraying. It is possible to cover 1 mm cracks by multiple application.

### PACK SIZES

25 kg

### COVERAGE (m<sup>2</sup>/kg)

it depends on number and size of microcracks

### USE

INTERIOR

EXTERIOR

### APPLICATION



white



# BARLET

# AKRYLÁT PLUS

## V 4013 | ACRYLIC FACADE PAINT

### PRODUCT:

The water-based acrylic façade paint has high opacity with reduced consumption, overlaps micro cracks and is created for renovation of façade insulating systems. The paint uses on lime-concrete plasters, concrete, aerated concrete, chipboards and restoration plasters both exterior and interior.

### SURFACE PREPARATION:

The surface has to be dried and aged to prevent colour changing, binder saponification, reduction of the paint adhesion and lime efflorescence on the coat surface. Remove mould and algae. A new plaster needs to be aged 4 weeks. Porous, dusting surfaces penetrate (fix) by penetrating primer REMAL, BARLET or SOICRAT. The painting temperature needs to be between 15 - 25 °C, not lower 7 °C and not above 30 °C.

### RECOMMENDED APPLICATION:

Mix properly before use. It is possible to thin by 5 - 10 % of water. Apply 2 coats by brush or roller. Other coat applies after complete drying.

### PACK SIZES

1 kg

5 kg

10 kg

15 kg

25 kg

### COVERAGE (m<sup>2</sup>/kg)

up to 8

### USE

INTERIOR

EXTERIOR

### APPLICATION



white



# BARLET

# AKRYLÁT PLUS BÁZE

## V 4013 | ACRYLIC FAÇADE PAINT BASE



### PACK SIZES

#### BASE A

0,8 kg  
5 kg  
10 kg  
25 kg

### PACK SIZES

#### BASE B, C

0,8 kg  
4,6 kg  
9,2 kg  
20 kg

### COVERAGE

(m<sup>2</sup>/kg)

up to 8

### USE

INTERIOR

EXTERIOR

### APPLICATION



### TINTING



### PRODUCT:

The bases A, B, C are designed for mixing centres. The water-based acrylic façade paint has high opacity with reduced consumption, overlaps micro cracks and is created for renovation of façade insulating systems. The paint uses on lime-concrete plasters, concrete, aerated concrete, chipboards and restoration plasters, both exterior and interior.

### SURFACE PREPARATION:

The surface has to be dried and aged to prevent colour changing, binder saponification, reduction of the paint adhesion and lime efflorescence on the coat surface. Remove mould and algae. A new plaster needs to be aged 4 weeks. Porous, dusting surfaces penetrate (fix) by penetrating primer REMAL, BARLET or SOICRAT. The painting temperature needs to be between 15 - 25 °C, not lower 7 °C and not above 30 °C.

### RECOMMENDED APPLICATION:

Mix properly before use. It is possible to thin by 5 - 10 % of water. Apply 2 coats by brush or roller. Other coat applies after complete drying.

### TINTING:

Different colour shades are prepared by tinting system TELURMIX and RAINBOW.

# BARLET AKRYLÁT PLUS S PLNIVEM

## V 4011 | ACRYLIC FAÇADE PAINT WITH FINE STRUCTURE



white



### PACK SIZES

1 kg  
5 kg  
10 kg  
15 kg  
25 kg

### COVERAGE

(m<sup>2</sup>/kg)

up to 5

### USE

INTERIOR

EXTERIOR

### APPLICATION



### PRODUCT:

The water-based acrylic façade paint has high opacity with reduced consumption, overlaps micro cracks and is created for renovation of façade insulating systems. The paint uses on lime-concrete plasters, concrete, aerated concrete, chipboards and restoration plasters, both exterior and interior.

### SURFACE PREPARATION:

The surface has to be dried and aged to prevent colour changing, binder saponification, reduction of the paint adhesion and lime efflorescence on the coat surface. Remove mould and algae. A new plaster needs to be aged 4 weeks. Porous, dusting surfaces penetrate (fix) by penetrating primer REMAL, BARLET or SOICRAT. The painting temperature needs to be between 15 - 25 °C, not lower 7 °C and not above 30 °C.

### RECOMMENDED APPLICATION:

Mix properly before use. It is possible to thin by 5 - 10 % of water. Apply 2 coats by brush or roller. Other coat applies after complete drying. It contains fine quartz that gives structure to the finish – don't spray it.

# BARLET AKRYLÁT PLUS S PLNIVEM BÁZE

## V 4011 | ACRYLIC FAÇADE PAINT WITH FINE STRUCTURE BASE

### PRODUCT:

The bases A, B, C are designed for mixing centres. The water-based acrylic façade paint has high opacity with reduced consumption, overlaps micro cracks and is created for renovation of façade insulating systems. The paint uses on lime-concrete plasters, concrete, aerated concrete, chipboards and restoration plasters both exterior and interior.

### SURFACE PREPARATION:

The surface has to be dried and aged to prevent colour changing, binder saponification, reduction of the paint adhesion and lime efflorescence on the coat surface. Remove mould and algae. A new plaster needs to be aged 4 weeks. Porous, dusting surfaces penetrate (fix) by penetrating primer REMAL, BARLET or SOICRAT. The painting temperature needs to be between 15 - 25 °C, not lower 7 °C and not above 30 °C.

### RECOMMENDED APPLICATION:

Mix properly before use. It is possible to thin by 5 - 10 % of water. Apply 2 coats by brush or roller. Other coat applies after complete drying. It contains fine quartz that gives structure to the finish – don't spray it.

### TINTING:

Different colour shades are prepared by tinting system TELURMIX and RAINBOW.

### PACK SIZES

#### BASE A

0,8 kg

5 kg

10 kg

25 kg

### PACK SIZES

#### BSEE B, C

0,8 kg

4,6 kg

9,2 kg

20 kg

### COVERAGE

(m<sup>2</sup>/kg)

up to 5

### USE

INTERIOR

EXTERIOR

### APPLICATION



### TINTING



# BARLET PENETRACE SILIKON

## V 4018 | SILICONE IMPREGNATING PRIMER

### PRODUCT:

The water-based silicone impregnating primer uses on absorbent plasters to fix surfaces and improve adhesion of silicone façade paints. The primer reduces and unifies substrate absorbency, it reduces consumption of the finish.

### SURFACE PREPARATION:

The surface has to be cleaned, dried and aged.

### RECOMMENDED APPLICATION:

The impregnating primer doesn't thin. It applies by brush or spray. The façade paint uses after drying for at least 4 hours.

### PACK SIZES

5 kg

10 kg

### COVERAGE

(m<sup>2</sup>/kg)

up to 7

### USE

INTERIOR

EXTERIOR

### APPLICATION



# BARLET

## V 4018 | SILICONE FAÇADE PAINT



white



### PACK SIZES

5 kg

10 kg

25 kg

### COVERAGE (m<sup>2</sup>/kg)

up to 5

### USE

INTERIOR

EXTERIOR

### APPLICATION



# SILIKON

### PRODUCT:

The water-based silicone façade paint is water-repellent, self-cleaning and permeable coating. It uses on lime-concrete plasters, concrete, aerated concrete, chipboards, both exterior and interior. The finish is extremely weather resistant.

### SURFACE PREPARATION:

The surface has to be dried and aged to prevent colour changing, binder saponification, reduction of the paint adhesion and lime efflorescence on the coat surface. Remove mould and algae. A new plaster needs to be aged 4 weeks. Porous, dusting surfaces penetrate (fix) by silicone penetrating primer BARLET. The painting temperature needs to be between 15 - 25 °C, not lower 7 °C and not above 30 °C.

### RECOMMENDED APPLICATION:

Mix properly before use. It can be thinned by max. 5 % of water. Apply 2 coats by brush or roller. Recoat when the surface dries thoroughly.

# BARLET

## V4018 | SILICONE FAÇADE PAINT BASE



### PACK SIZES

#### BASE A

0,8 kg

5 kg

10 kg

25 kg

### PACK SIZES

#### BASE B

0,8 kg

4,6 kg

9,2 kg

23 kg

### PACK SIZES

#### BASE C

0,8 kg

4,6 kg

9,2 kg

20 kg

### COVERAGE (m<sup>2</sup>/kg)

up to 5

### USE

INTERIOR

EXTERIOR

### APPLICATION



### TINTING



### PRODUCT:

The bases A, B, C are designed for mixing centres. The water-based silicone façade paint is water-repellent, self-cleaning and permeable coating. It uses on lime-concrete plasters, concrete, aerated concrete, chipboards, both exterior and interior. The finish is extremely weather resistant.

### SURFACE PREPARATION:

The surface has to be dried and aged to prevent colour changing, binder saponification, reduction of the paint adhesion and lime efflorescence on the coat surface. Remove mould and algae. A new plaster needs to be aged 4 weeks. Porous, dusting surfaces penetrate (fix) by silicone penetrating primer BARLET. The painting temperature needs to be between 15 - 25 °C, not lower 7 °C and not above 30 °C.

### RECOMMENDED APPLICATION:

Mix properly before use. It can be thinned by max. 5 % of water. Apply 2 coats by brush or roller. Recoat when the surface dries thoroughly.

### TINTING:

Different colour shades are prepared by tinting system TELURMIX and RAINBOW.

# SILIKON BÁZE



# BARLET

# PENETRACE SILIKÁT

## V 4015 FX | SILICATE IMPREGNATING PRIMER

### PRODUCT:

The water-based silicate impregnating primer uses on absorbent plasters to fix surfaces and improve adhesion of silicate façade paints. The primer reduces and unifies substrate absorbency, reduces consumption of the finish and thins silicate façade paint BARLET.

### SURFACE PREPARATION:

The surface has to be cleaned, dried and aged.

### RECOMMENDED APPLICATION:

It doesn't thin before use. The primer applies by brush. The silicate façade paint uses after drying for at least 4 hours.

### PACK SIZES

5 kg

10 kg

### COVERAGE (m<sup>2</sup>/kg)

up to 7

### USE

INTERIOR

EXTERIOR

### APPLICATION



# BARLET

# SILIKÁT

## V 4015 | SILICATE FAÇADE PAINT

### PRODUCT:

The water-based silicate façade paint makes highly permeable and long-lasting finish. It uses on aged lime-concrete plasters, restoration plasters, concrete, aerated concrete, both exterior and interior. Gypsum substrate isn't suitable for painting.

### SURFACE PREPARATION:

The surface has to be dried and aged to prevent colour changing, binder saponification, reduction of the paint adhesion and lime efflorescence on the coat surface. Remove mould and algae. A new plaster needs to be aged 4 weeks. Porous, dusting surfaces penetrate (fix) by silicate penetrating primer BARLET. The painting temperature needs to be between 15 - 25 °C, not lower 7 °C and not above 30 °C.

### RECOMMENDED APPLICATION:

Mix properly before use. It can be thinned by the silicate impregnating primer. The silicate façade paint applies by a brush after primer drying for at least 24 hours. Apply 2nd coat after 24 hours. The brush is recommended for both coatings. Use of a roller could cause colour defects. Treat coating by hydrophobic agent BARLET FOB for long-lasting finish after at least 24 hours.

### TINTING:

It is supplied in white shade. Colour shades would be mixed by inorganic pigments only.

### PACK SIZES

5 kg

10 kg

25 kg

### COVERAGE (m<sup>2</sup>/kg)

up to 5

### USE

INTERIOR

EXTERIOR

### APPLICATION



white



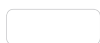
# BARLET

# VÁPENNÁ BARVA

## V 4019 | LIME FAÇADE PAINT



white



### PACK SIZES

25 kg

### COVERAGE (m<sup>2</sup>/kg)

up to 5

### USE

INTERIOR

EXTERIOR

### APPLICATION



### PRODUCT:

The water-based lime façade paint is highly permeable. It uses on restoration plasters, lime-concrete plasters, concrete and aerated concrete, both exterior and interior.

### SURFACE PREPARATION:

The surface has to be dried and aged to prevent colour changing, binder saponification, reduction of the paint adhesion and lime efflorescence on the coat surface. Remove mould and algae. A new plaster needs to be aged 4 weeks. Porous, dusting surfaces penetrate (fix) by penetrating primer REMAL, BARLET or SOICRAT. The painting temperature needs to be between 15 - 25 °C, not lower 7 °C and not above 30 °C.

### RECOMMENDED APPLICATION:

Mix properly before use. It can be thinned by max 10 % of water. Apply the lime paint by brush after the penetrated surface dries thoroughly, at least 4 hours. Apply 2nd coat after 4 - 6 hours. Treat coating by hydrophobic agent BARLET FOB for long-lasting finish after at least 3 days.

### TINTING:

It is supplied in white shade. Colour shades would be mixed by inorganic pigments only.

# BARLET

# FOB

## V 4019 F | HYDROPHOBIC FINISH



### PACK SIZES

5 kg

10 kg

### COVERAGE (m<sup>2</sup>/kg)

up to 7

### USE

EXTERIOR

### APPLICATION



### PRODUCT:

The water-based hydrophobic agent makes water repellent finish on especially silicate and lime façade paints. The finish protects the façade paint and prolong the life of the coating.

### SURFACE PREPARATION:

The surface has to be dried.

### RECOMMENDED APPLICATION:

It is applied on especially rain stressed areas that are impregnated once with brush by BARLET HYDROPHOBIC FINISH. The coat is aged after 24 hours, until it protects against rain. It could cause highlighting (slight darkening) of the paint. Properly spread when it applies.

# BARLET ZÁKLADNÍ NÁTĚR POD OMÍTKY BÁZE

## M 6000 | PRIMER PAINT

### PRODUCT:

The water-based primer paint undercoats decorative and mosaic plasters to avoid defects in time of their smoothing. It fixes substrates, unifies its colour and absorbency, it provides a bridge for plasters.

### SURFACE PREPARATION:

The surface has to be dried, cleaned, levelled and aged, free of loose particles, dust, without cracks. Suitable substrates are stucco and mortar adhesives. Deep and dark shades are not recommended for façade insulating systems. Optimal temperature needs to be between 15 - 25 °C, not lower 7 °C, not above 30 °C. Higher humidity and lower temperature prolong drying time.

### RECOMMENDED APPLICATION:

Apply 1 coat by brush or roller 4 hours before plasters application. Dilute by 10 % of water. Don't apply when it rains, fog, strong wind and on direct sunlight areas. It contains fine quartz – don't spray.

### TINTING:

Different colour shades are prepared by tinting system TELURMIX and RAINBOW.

### PACK SIZES

5 kg

14 kg

### COVERAGE (m<sup>2</sup>/kg)

up to 4

### USE

INTERIOR

EXTERIOR

### APPLICATION



### TINTING



# BARLET PASTOVITÁ DEKORATIVNÍ OMÍTKA BÁZE

ACRYLIC, SILICONE, SILICATE PLASTERS GRAINED/GROOVED



## PACK SIZES

25 kg

## USE

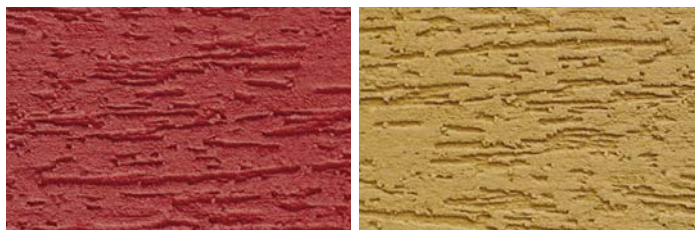
INTERIOR

EXTERIOR

## APPLICATION



## TINTING



## PRODUCT:

The water-based plasters makes highly decorative and weather resistant finish, both exterior and interior. Various shades are fade resistant and are available in acrylic, silicone and silicate versions grained/grooved with particles up to 1.5 mm and 2.0 mm.

## SURFACE PREPARATION:

The surface has to be dried, cleaned, levelled and aged, free of loose particles and dust, without cracks. Suitable substrates are all mineral plasters and mortar adhesives of façade insulating systems.

## RECOMMENDED APPLICATION:

### THE PRIMER

Apply BARLET PRIMER PAINT in asked shade to avoid defects when plaster smoothing 4 hours before. The primer paint dilute by 10 % of water and mix it.

### Application

Mix properly by slow-motion spiral mixer just before use. It can be diluted by small amount of water. It applies uniformly without interruption by stainless steel trowel in grain thickness. Final structure of the finish makes by plastic float after some time of drying.

Grooved structure makes by vertical, horizontal or circular motions.

Grained structure makes by smoothing, the finish unifies.

Different moves make a different structure.

### Conditions

Summer supports drying (temperature over 25 °C, hot substrate, and wind) and processing shortens (linking and making of the structure).

Spring and autumn (temperature between 5 - 12 °C, high humidity) extend drying.

Use variation "Z" without additives that prolong drying. Possibility of mechanical damage increases by weather conditions and its changing.

The temperature under 10 °C requires more careful work, under 5 °C isn't suitable.

### Consumption

The primer paint	0.25 kg/m <sup>2</sup>
The grained plaster size 1.5 mm	2.5 – 2.8 kg/m <sup>2</sup>
The grained plaster size 2.0 mm	3.0 – 3.2 kg/m <sup>2</sup>
The grooved plaster size 1.5 mm	2.1 – 2.3 kg/m <sup>2</sup>
The grooved plaster size 2.0 mm	2.3 – 2.5 kg/m <sup>2</sup>

Consumptions are approximate and depends on substrate (stucco and adhesive structure) and application.

## TINTING:

BASE and BASE S are tinted by system TELURMIX and RAINBOW, BASE also uses as white.



# BARLET

# MOZAIKOVÁ OMÍTKA

## M 5000 | MOSAIC PLASTER

### PRODUCT:

The mosaic plaster uses on house plinths, vertical walls and columns, exposed areas as entrances and corridors, both exterior and interior. The plaster makes decorative finish and resists to weather conditions. The product is available with coloured quartz stones (K), grains 1.6 mm and coloured crushed calcite (M), grains 2.0 mm. Recommended substrate is stucco and mortar adhesive. It is not suitable on humid horizontal areas.

### SURFACE PREPARATION:

The surface has to be cleaned, dried, aged and free of cracks, dust, loos particles and biological attack (mould and algae). The surface impregnates by BARLET PRIMER PAINT at first. And it is necessary to check proper plinth waterproofing.

### RECOMMENDED APPLICATION:

Apply coat by coloured BARLET PRIMER PAINT 6 hours before. The primer colour use similar to the mosaic plaster. The primer dilute by max 10 % of water. Mix the mosaic plaster by slow-motion spiral mixer just before application. Don't whip up and possibly not dilute. Dilute by max 2 % of water for smooth application.

It applies uniformly without interruption by stainless steel trowel in grain thickness. Smooth the whole area by the same trowel.

### Notice

The product contains different colour particles and it is necessary use the same production batch or different batches mix together before application. Protect surrounding against dirt, it is difficult to clean when dried. Do it immediately. Clouding can occur on fresh plaster, disappear when drying. Long term moisture could also cause it later on, disappear when drying.

### Weather conditions

Don't apply when it rains, fog, strong wind and on direct sunlight surfaces. Suitable temperature 15 - 25 °C, not lower 7 °C and not above 30 °C. Also for drying time. Higher humidity of air and lower temperature prolong drying time.

### PACK SIZES

K

6,75 kg

30 kg

### PACK SIZES

M

7,5 kg

30 kg

### COVERAGE

(kg/ m<sup>2</sup>)

K 4 - 4,5

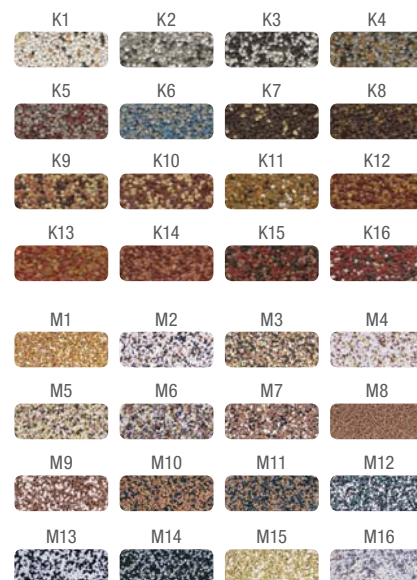
M 5 - 5,5

### USE

INTERIOR

EXTERIOR

### APPLICATION



# BARLET

# TEKUTÁ TÓNOVACÍ BARVA

## V 3504 | ACRYLIC TINTING PAINT

### PRODUCT:

The water-based acrylic tinting paint uses for tinting of different interior paints REMAL, façade paints and plasters BARLET and LATEX paints. The paint can be used directly too. It contains fade resistant pigments.

### SURFACE PREPARATION:

Mix properly before use. It can be diluted by small amount of water. BARLET ACRYLIC TINTING PASTE add into a product and properly mix together. Test the shade on reference area.

### PACK SIZES

300 g

700 g

### USE

INTERIOR

EXTERIOR







# BAKRYLEX

WATER-BASED PRIMERS,  
ENAMELS, WOOD STAINS  
AND TOPCOATS



# BAKRYLEX

# NAPOUŠTĚDLO

## V 1404B | DEEP-PENETRATING PRIMER ON WOOD



0000  
transparent



### PACK SIZES

0,75 kg

2,5 kg

### COVERAGE (m<sup>2</sup>/kg)

8 - 12

### USE

INTERIOR

EXTERIOR

### APPLICATION



### PRODUCT:

The water-based penetrating primer makes protective coating on wood. It penetrates structure of wood easy, protects it and enhances its natural beauty. It uses under wood stains, varnishes and topcoats in interior and exterior for windows, doors, roof trusses, pergolas, terraces, floors, railings, panelling, garden houses etc.

### SURFACE PREPARATION:

The surface has to be cleaned, dried, rid of loose particles, old putties and dust. Excessive resin and grease spots strip by thinner C6000. Sand in grain direction, dust off.

### RECOMMENDED APPLICATION:

Coat the surface by thinned product with a brush. Let it dry for 4 - 6 hours, sand the surface by fine sandpaper and paint by a decorative coat. Don't apply under direct sunlight, protect against rain during drying. Application temperature is 10 to 30 °C. Tools immediately clean by water.

# BAKRYLEX

# DISKOLOR

## V 2035 | SMOOTH WOOD STAIN WITH NATURE WAX



### PACK SIZES

0,7 kg

### COVERAGE (m<sup>2</sup>/kg)

6 - 8

### USE

INTERIOR

EXTERIOR

### APPLICATION



### PRODUCT:

The water-based smooth wood stain uses on wood, especially: garden pergolas, fences, saw timber, wooden gables, roofs and rooflines. It makes the flexible, silk finish that highlights beauty of wood. The coat resists weather conditions. It is suitable for painting of dry decorations, not for sealing surfaces of windows and doors.

### SURFACE PREPARATION:

Wood has to be cleaned, rid of grease, dust and loose old coats. Excessive resin has to be stripped. Sand in grain direction and dust off. It is recommended to treat the exterior wood against mould, fungi and insects by LAZUROL FUNGICIDAL PENETRATION S 1033.

### RECOMMENDED APPLICATION:

Mix properly before use. It shouldn't be thinned before application. Apply 2 - 3 coats by brush, between coats at least 4 hours and max 72 hours, at 20 °C. The stain residue wipes by dry brush from the surface after 10 minutes. The surface slightly sands by sandpaper no. 400 - 600 after 1st coat. Tools and dirty places clean immediately. BAKRYLEX DISKOLOR is not suitable for permanently humid environment.

0020 chestnut	0021 nut	0022 palisandr
0023 teak	0025 sipo	0060 pine
0062 pine	0064 beech	0065 larch
0080 mahogany	0085 fiery mahogany	0099 ebony



# BAKRYLEX

# DISKOLOR BÁZE

## V 2035 | SMOOTH WOOD STAIN WITH NATURE WAX BASE

### PRODUCT:

The base is designed for mixing centres. The water-based smooth wood stain uses on wood, especially: garden pergolas, fences, saw timber, wooden gables, roofs and rooflines. It makes the flexible, silk finish that highlights beauty of wood. The coat resists weather conditions. It is suitable for painting of dry decorations, not for sealing surfaces of windows and doors.

### SURFACE PREPARATION:

Wood has to be cleaned, rid of grease, dust and loose old coats. Excessive resin has to be stripped. Smooth in grain direction and dust off. It is recommended to treat the exterior wood against mould, fungi and insects by LAZUROL FUNGICIDAL PENETRATION S 1033.

### RECOMMENDED APPLICATION:

Mix properly before use. It shouldn't be thinned before application. Apply 2-3 coats by brush, between coats at least 4 hours and max 72 hours, at 20 °C. The stain residue wipes by dry brush from the surface after 10 minutes. The surface slightly sands by sandpaper no. 400 - 600 after 1st coat. Tools and dirty places clean immediately. BAKRYLEX DISKOLOR is not suitable for permanently humid environment.

### TINTING:

Different colour shades are prepared by tinting system RAINBOW.

### PACK SIZES

0,7 kg

2,5 kg

5 kg

### COVERAGE (m<sup>2</sup>/kg)

6-8

### USE

INTERIOR

EXTERIOR

### APPLICATION



TINTING



# BAKRYLEX

# UNIVERZÁL MAT

## V 2066 | ENAMEL FOR IRON AND WOOD MATT

### PRODUCT:

The water-based enamel matt uses on wood, metal, chipboard, masonry and paper, both interior and exterior. It has high opacity and weather resistance. Repainting is assumed for 3 - 5 years in exterior. The product meets requirements for coating of toys for children 3 years old. Wet abrasion resistance class 1 (CSN EN ISO 11998, classification EN 13300).

### SURFACE PREPARATION:

Absorbent surfaces penetrate by impregnating primer REMAL, BARLET or SOICRAT. Wood paints by BAKRYLEX PRIMER V 2070. Metal, free of grease, dust and rust.

### RECOMMENDED APPLICATION:

Mix properly before use. It is possible to thin by small amount of water. Apply 2 - 3 coats by brush, roller or spray at 10 - 25 °C. Recoat after 4 hours.

### PACK SIZES

0,7 kg

5 kg

10 kg

### COVERAGE (m<sup>2</sup>/kg)

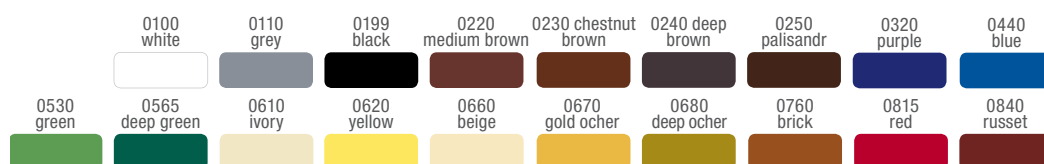
6 - 8

### USE

INTERIOR

EXTERIOR

### APPLICATION



# BAKRYLEX

## V 2066 | ENAMEL FOR IRON AND WOOD MATT BASE



### PACK SIZES BASE A

0,7 kg

5 kg

10 kg

### PACK SIZES BASE B, C

0,7 kg

4,6 kg

9,2 kg

### COVERAGE (m<sup>2</sup>/kg)

6 - 8

### USE

INTERIOR

EXTERIOR

### APPLICATION



### TINTING

### PRODUCT:

The bases are designed for mixing centres. The water-based enamel matt uses on wood, metal, chipboard, masonry and paper, both interior and exterior. It has high opacity and weather resistance. **Repainting is assumed for 3 - 5 years in exterior. The product meets requirements for coating of toys for children 3 years old.** Wet abrasion resistance class 1 (CSN EN ISO 11998, classification EN 13300)

### SURFACE PREPARATION:

Absorbent surfaces penetrate by impregnating primer REMAL, BARLET or SOICRAT. Wood paints by BAKRYLEX PRIMER V 2070. Metal, free of grease, dust and rust.

### RECOMMENDED APPLICATION:

Mix properly before use. It is possible to thin by small amount of water. Apply 2 - 3 coats by brush, roller or spray at 10 - 25 °C. Recoat after 4 hours.

### TINTING:

Different colour shades are prepared by tinting system RAINBOW.

# BAKRYLEX

# UNIVERZÁL LESK

## V 2066L | ENAMEL FOR IRON AND WOOD GLOSS



### PACK SIZES

0,7 kg

5 kg

### COVERAGE (m<sup>2</sup>/kg)

6 - 8

### USE

INTERIOR

EXTERIOR

### APPLICATION



### PRODUCT:

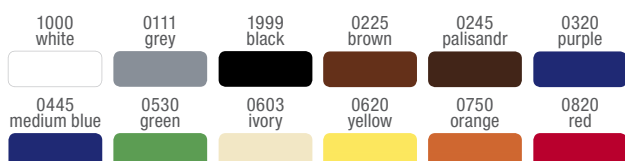
The water-based enamel gloss uses on wood, metal, chipboard, masonry and paper, both interior and exterior. It has high opacity and weather resistance. Repainting is assumed for 3 - 5 years in exterior. The product meets requirements for coating of toys for children 3 years old. Wet abrasion resistance class 1 (CSN EN ISO 11998, classification EN 13300).

### SURFACE PREPARATION:

Absorbent surfaces penetrate by impregnating primer REMAL, BARLET or SOICRAT. Wood paints by BAKRYLEX PRIMER V 2070. Metal, free of grease, dust and rust.

### RECOMMENDED APPLICATION:

Mix properly before use. It is possible to thin by small amount of water. Apply 2 - 3 coats by brush, roller or spray at 10 - 25 °C. Recoat after 4 hours.



# BAKRYLEX UNIVERZÁL LESK BÁZE

## V 2066L | ENAMEL FOR IRON AND WOOD GLOSS BASE

### PRODUCT:

The base is designed for mixing centres. The water-based enamel gloss uses on wood, metal, chipboard, masonry and paper, both interior and exterior. It has high opacity and weather resistance. **Repainting is assumed for 3 - 5 years in exterior. The product meets requirements for coating of toys for children 3 years old.** Wet abrasion resistance class 1 (CSN EN ISO 11998, classification EN 13300).

### SURFACE PREPARATION:

Absorbent surfaces penetrate by impregnating primer REMAL, BARLET or SOICRAT. Wood paints by BAKRYLEX PRIMER V 2070. Metal, free of grease, dust and rust.

### RECOMMENDED APPLICATION:

Mix properly before use. It is possible to thin by small amount of water. Apply 2 - 3 coats by brush, roller or spray at 10 - 25 °C. Recoat after 4 hours.

### TINTING:

Different colour shades are prepared by tinting system RAINBOW.

### PACK SIZES BASE A

0,7 kg

5 kg

10 kg

### PACK SIZES BASE B, C

0,7 kg

4 kg

8 kg

### COVERAGE (m<sup>2</sup>/kg)

6 - 8

### USE

INTERIOR

EXTERIOR

### TINTING



### APPLICATION



# BAKRYLEX

# PRIMER

## V 2070 | PRIMER FOR WOOD

### PRODUCT:

The water-based primer for wood has high opacity and dries quickly. The coat improves adhesion of a topcoat and isolates wood dyes.

### SURFACE PREPARATION:

The surface penetrates by impregnating primer REMAL, BARLET or SOICRAT, let dry 1 - 2 hours. It sands by sandpaper no. 320 - 600, dusts off.

### RECOMMENDED APPLICATION:

Apply 1 coat of BAKRYLEX PRIMER FOR WOOD by brush or spray, let dry at least 4 hours. It is not possible to sand the coat. Then apply 1 - 2 coats of BAKRYLEX ENAMEL FOR IRON AND WOOD V 2066, V 2066L.

### PACK SIZES

0,8 kg

### COVERAGE (m<sup>2</sup>/kg)

6 - 8

### USE

INTERIOR

EXTERIOR

### APPLICATION



0100  
white



# BAKRYLEX

# HOBBY TMEL

## V 5000 | PUTTY FOR WOOD



0100  
white



### PACK SIZES

0,75 kg

### COVERAGE (m<sup>2</sup>/kg)

up to 6

### USE

INTERIOR

EXTERIOR

### APPLICATION



### PRODUCT:

The water-based putty uses for levelling of smaller surface defects on wood, chipboard, plasters and concrete that are impregnated before. It is suitable for interior and exterior use. The product applies easy, dries and sands well.

### SURFACE PREPARATION:

Wood impregnates by impregnating primer: REMAL, BARLET or SOICRAT, drying 24 hours.

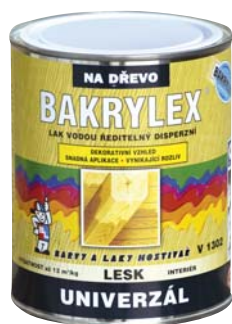
### RECOMMENDED APPLICATION:

Wood sands by sandpaper no. 240. Use a scraper for filling. Optimal thickness 150 µm, its number as needed, 4 hours between. The surface sands by sandpaper no. 240, a painting system applies, when the surface dries thoroughly for 24 hours.

# BAKRYLEX

# LAK UNIVERZÁL

## V 1302 | VARNISH FOR WOOD



0000  
gloss

0001  
matt



### PACK SIZES

0,6 kg

2 kg

5 kg

### COVERAGE (m<sup>2</sup>/kg)

8 - 12

### USE

INTERIOR

### APPLICATION



### PRODUCT:

The water-based varnish uses on hard and soft woods, especially: furniture, wooden panelling, plywood in interior. It is possible to use it as clear coat on acrylic enamels.

### SURFACE PREPARATION:

The surface has to be cleaned, rid of grease, dust and loose old coats. Excessive resin has to be stripped. Sand in grain direction and dust off. The surface impregnates by the varnish thinned with water in ratio 1 : 1 or impregnating primer: REMAL, BARLET or SOICRAT. Then it sands by sandpaper no. 400 - 600 after drying at least 4 hours.

### RECOMMENDED APPLICATION:

Mix properly before use. It shouldn't be thinned. Apply 2 - 3 coats. When applies on acrylic coat, the surface slightly sands and dusts off (without impregnation), apply 1 - 2 coats. The surface sands with sandpaper no. 400 - 600 when spraying after 4 hours and apply another coat. The temperature needs to be above 10 °C. Apply by brush, roller or spray.



# UNIFLEX

ADHESIVES



# UNIFLEX

# NA PVC KRYTINY

## V 7508 | VINYL FLOOR COVERING ADHESIVE



### PACK SIZES

1 kg

25 kg

### COVERAGE

(g/m<sup>2</sup>)

up to 400

### USE

INTERIOR

### APPLICATION



### PRODUCT:

The water based acrylic adhesive bonds vinyl floor covering, vinyl on textile, rubber and textile covering on concrete, anhydrite, gypsum, wood, chip and fibre boards. It can also bonds vinyl wallpapers, paper, upholstery textiles, foam, styrofoam and similar materials on absorbent surfaces.

### SURFACE PREPARATION:

The surface has to be cleaned, rid of dust, dirt, grease, paint and asphalt spots. Max humidity of concrete is allowed 4 %, anhydrite 3 %, wood and wood materials 10 %.

### RECOMMENDED APPLICATION:

The adhesive spreads by a notched trowel on one side (vinyl A1/A2, carpet B1/B2) at the surface temperature at least 15 °C in a strip width or the whole area according size, shape and application. Lay the floor covering and press it after 5 - 10 minutes (ventilation). The tack-up time is 15 - 20 minutes. Read carefully instructions of floor covering producers. Tools clean by water.

# UNIFLEX

# NA KOREK A PARKETY

## V 7510 | CORK AND PARQUET ADHESIVE



### PACK SIZES

1 kg

### COVERAGE

(g/m<sup>2</sup>)

up to 350

### USE

INTERIOR

### APPLICATION



### PRODUCT:

The water based acrylic adhesive uses for bonding of an unvarnished cork on walls and a cork on floors.

### SURFACE PREPARATION:

The surface has to be absorbent, cleaned, dried and solid. Thick old paints scrape, too absorbent and sanding substrates impregnate by SOICRAT, REMAL or BARLET IMPREGNATING PRIMER. It is possible to apply after 1 - 2 hours of drying.

### RECOMMENDED APPLICATION:

The adhesive doesn't thin. Apply 1 - 3 mm by a notched trowel A2/A3 at the surface temperature at least 15 °C. Lay a cork immediately, don't let the adhesive dry on the surface. It is possible to coat the cork by varnish (BAKRYLEX AKRYLUREX V 1301) after 72 hours from bonding. Tools clean by water.

# UNIFLEX NA POLYSTYREN

## V 7510L | STYROFOAM ADHESIVE

### PRODUCT:

The water based acrylic adhesive uses for bonding of styrofoam decorative tiles on walls and ceilings.

### SURFACE PREPARATION:

The surface has to be absorbent, cleaned, dried and solid. Thick old paints scrape, too many absorbent and sanding substrates impregnate by SOICRAT, REMAL or BARLET IMPREGNATING PRIMERS. It is possible to apply after 4 hours of drying.

### RECOMMENDED APPLICATION:

The adhesive doesn't thin. Apply spots 1 - 2 mm at corners and centre on reverse side of a tile. Press immediately on a surface and hold for 10 sec. The surface temperature must be at least 15 °C. Tools clean by water.

### PACK SIZES

1 kg

3 kg

### COVERAGE

(g/m<sup>2</sup>)

up to 230

### USE

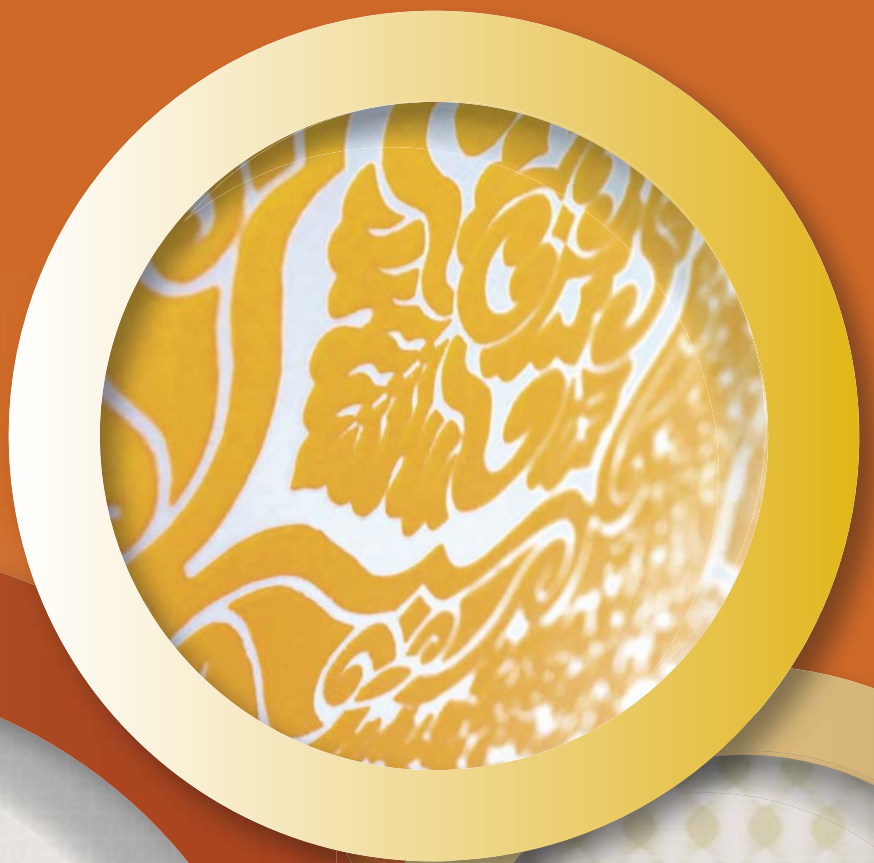
INTERIOR

### APPLICATION



# APEKO

WALLCOVERING ADHESIVE





# APEKO

# LEPIDLO NA TAPETY

## V 1306 | WALLPAPER ADHESIVE

### PRODUCT:

The water based acrylic adhesive uses for hanging of reflective, paper and vinyl wallpapers with paper backing on plasters, concrete, wood, chip and fibre boards in interior. It can be used as sizing agent into wall paints.

### SURFACE PREPARATION:

The surface has to be levelled, dried, smoothed, cleaned and solid without cracks. Metal paints by an anticorrosive primer. Usual material (plaster, concrete, chip and fibre boards) bonds directly. If the surface is painted by wall paint with sizing agent, it is necessary to remove it (wet and scrape). Fix the surface and penetrate it with the adhesive thinned by water in ratio till 1 : 5. Let it dry for at least 2 hours.

Bigger unevenness repairs with gypsum and it sands.

### RECOMMENDED APPLICATION:

Thin the adhesive for different wallpapers based on: paper in ratio 2 : 1 (1 kg of the adhesive to 0.5 l of water), vinyl 3 : 1 (1 kg of the adhesive to 0.33 l of water), and reflective doesn't thin. Cut the wallpaper as needed before hanging. Wet in water for 3 - 10 minutes. Apply the adhesive by brush, roller or spray (e.g. TITAN STORCH) and hang after 2 minutes. The wallpaper hangs from top and smoothes by a soft brush, a sponge, a rubber roller, the adhesive residue removes by a wet sponge or a cloth. The wallpaper could be slightly washed with lukewarm water with a detergent after 5 days, if it is covered by a varnish. The surface temperature must be at least 10 °C.

### PACK SIZES

1 kg

### COVERAGE (g/m<sup>2</sup>)

up to 190

### USE

INTERIOR

### APPLICATION



# APEKO NA SKLOVLÁKNITÉ TAPETY

## V 1312 | FIBREGLASS WALLCOVERING ADHESIVE

### PRODUCT:

The water based acrylic adhesive uses for hanging of a heavy textile wallcovering especially fibreglass on plasters, drywalls, wood, formica, concrete, chip and fibre boards.

### SURFACE PREPARATION:

The surface has to be cleaned, dried, free of dust, loose particles and grease. Old painting remove (wet and scrape). Cracks and unevenness repair by gypsum, spatula. Metal paints by an anticorrosive primer.

### RECOMMENDED APPLICATION:

Apply the adhesive and hang a wallcovering till 2 minutes. Cut the wallcovering to needed length and shape before, don't wet it. Hang the wallcovering from top, the adhesive spread by a brush, a roller or a notched trowel. Press the wallcovering with rubber roller from top and to the sides. The adhesive residue removes by a wet sponge. Don't spread the adhesive on a surface ahead, because it isn't possible to hang on slightly dried adhesive. The temperature of the surface must be at least 10 °C.

### PACK SIZES

1 kg

### COVERAGE (g/m<sup>2</sup>)

up to 190

### USE

INTERIOR

### APPLICATION



# SOICRAT

UNIVERSAL IMPREGNATING  
PRIMERS



# SOICRAT

# KONCENTRÁT 2802A

## V 1309 | CONCENTRATE PENETRATING PRIMER

### PRODUCT:

The water based acrylic primer penetrates a surface after thinning and improves properties of building mixtures containing concrete and calcium hydrate.

### RECOMMENDED APPLICATION:

**An Absorbent surfaces:** Part of SOICRAT thins by 3 - 15 parts of water (the more absorbent, the more thinning).

**Concrete sealing – dustless:** Part of SOICRAT thins by 10 parts of water and add 4 - 5 volume parts of concrete. Mix properly and coat a surface.

**Mortar for tiling and paving:** Mix 2 parts of sand and 1 part of Portland cement. Add SOICRAT thinned by 1 - 2 parts of water while mixing to the asked viscosity. Don't wet both a surface and tiles.

**Lime mortar:** The basis is sand and calcium hydrate. Add 10 parts of SOICRAT to 100 g of calcium hydrate and add water to the asked viscosity. The mortar has increased adhesion to a surface, is flexible and suitable for masonry and fasten roof tiles.

**Concrete or cement mortar:** Add 4 - 10 L of SOICRAT to 100 g of cement. Add SOICRAT after mixing of cement mixture and finally add water.

### PACK SIZES

1 kg

3 kg

5 kg

10 kg

### USE

INTERIOR

EXTERIOR

### APPLICATION



# SOICRAT

# PENETRACE 2802A

## V 1310 | UNIVERSAL PENETRATING PRIMER

### PRODUCT:

The water-based acrylic penetration uses as primer on porous surfaces (plasters, wood). The primer reduces and unifies substrate absorbency, fixes the surface and improves adhesion of interior wall and latex paints.

### SURFACE PREPARATION:

The surface has to be cleaned, dried and aged, rid of dust and dirt.

### RECOMMENDED APPLICATION:

The penetration primer thins by water in ratio 1 part of the penetration and up to 3 - 10 parts of water depending on the surface absorbency. Apply 1 - 2 coats. Apply the paint when the surface dries thoroughly.

### PACK SIZES

1 kg

5 kg

### USE

INTERIOR

EXTERIOR

### APPLICATION



# OTHER PRODUCTS





# ODSTRAŇOVAČ

# STARÝCH NÁTĚRŮ

## P 8214 | STRIPPER

### PRODUCT:

The mixture of solvents in paraffin removes old paints from wood, metal (excluding aluminium) and stone. It removes oil, alkyd, acrylic, nitrocellulose and two-pack paints.

### RECOMMENDED APPLICATION:

Mix properly before use. Apply 1 - 2 mm on old paint by soft brush with long hair. It does not run from vertical surfaces. Let it work at 15 - 25 °C for 15 - 45 min. Time for removing depends on type of the coat, its age and number of coatings. Old paints remove by a scraper after disturbing of the surface. If there are more coatings, the process repeats to the complete removing. Rest of paints remove by water, THINNER C 6000, P 6401 to achieve clean surface. If you don't have clean surface, adhesion of the new paint could be worse. Be careful in case of wooden surfaces, because stripper contains paraffin.

### PACK SIZES

0,6 l

### COVERAGE (m<sup>2</sup>/kg)

3 - 5

### APPLICATION



# ASFALTOVÝ LAK

# PROTI VLHKOSTI

## A 1010 | HUMIDITY BARRIER PAINT

### PRODUCT:

The solvent-based paint protects steel, cast-iron, wood, concrete, especially: different basins, cesspools and plasters against humidity. It makes waterproofing surfaces on building constructions, where lasting plasticity of barrier is asked. The finish is highly durable and water resistant. It is not resistant to solvents and temperature above 40 °C.

### SURFACE PREPARATION:

The surface has to be cleaned, dried and free of grease, old poorly adhering coats.

### THINNER S 6006

### RECOMMENDED APPLICATION:

Mix properly before use. Porous surfaces penetrate by THINNED A 1010 after 12 hours. Apply 1 - 2 coats by brush or roller with interval 24 hours between coats.

### PACK SIZES

1 kg

9 kg

### COVERAGE (m<sup>2</sup>/kg)

5 - 7

### USE

### EXTERIOR

### APPLICATION



1999  
black



# ISOBAL

## S 1901 | INSULATING VARNISH



### PACK SIZES

15 kg

190 kg

### APPLICATION



### VACUUM APPLICATION

### PRODUCT:

The solvent-based varnish uses on winding of rotating machine rotors and stators, for transformer windings and device coils. It is suitable for traction and mining motors, small motors and low-current devices. It uses for emblazoned glass wires and wires coated by varnishes class E and B. It resists chemical vapours, water, humidity and hot transformer oils. It does not attack wires coated by polyamide, polyterephthalate, polyurethane and polyesterimide varnishes.

### THINNER S 6006

### RECOMMENDED APPLICATION:

Remove humidity from winding at 105 - 110 °C. Apply after cooling to 30 °C. Vacuum application in an autoclave prefers for densely wound that is frequently combines with overpressure after vacuum cancelling. More densely wound can't dip (ignition coils, transformers where conductors are isolated by many paper sheets). Application can be forced by temperature at 30 - 40 °C or by addition of thinner in amount 5 %. More thinned varnish speeds up process and hardening, but lower insulating effect and elasticity. An oven pre-dries at 70 - 75 °C while intensive ventilation.

The varnish hardens at 125 - 130 °C for 12 - 24 hours after solvents evaporation. Usual winding coats once, than use 1 topcoat. Apply twice on winding for high humid environment and 2 - 3 topcoats apply.

# ISOBAL

## S 1903 | ELECTROINSULATING VARNISH CLASS F



### PACK SIZES

15 kg

190 kg

### APPLICATION



### VACUUM APPLICATION

### PRODUCT:

The solvent-based varnish uses for coating on front of winding generators, transformers and other electrical devices with operating temperature class F (155 °C). It uses for printed circuit boards to minus 60 °C, for installation and insulating on transformer sheets and coating of small motors (winding thickness 5 cm) without baking. The varnish contains thermosetting additive that gives electroinsulating of baked varnishes.

### THINNER S 6003

### RECOMMENDED APPLICATION:

Printed circuit boards: The varnish thins by alcohol, applies and dries at 23 ± 2 °C for 8 hours. It can be forced at 80 °C for 1 hour or 100 °C for half an hour. It solders by tin wave.

Transformer sheets: The varnish thins S 6003 as needed. Transformer sheets dip and dry (can be forced till 100 °C). Stack them after drying and blind together by operating temperature.

Small motors: The varnish thins S 6003 as needed. It applies by dipping or vacuum application, usually twice. Drying can be forced till 100 °C.

# ISOBAL

## S 1942 | BAKED VARNISH ON DYNAMO AND TRANSFORMER SHEETS

### PRODUCT:

The solvent-based varnish uses on enblazoned glass wires and coated electric motor wires, transformers and others that operates in class F (155 °C). It uses on dynamo sheets and accessories, where insulation, rust resistance and resistance to thermal oxidative degradation are asked. It doesn't attack conducts coated by polyamide, polyvinyl formal, terephthalate, polyesterimide and polyurethane paints.

### THINNER S 6003

### RECOMMENDED APPLICATION:

The varnish thins by S 6003 for flow viscosity 25 - 35 s (Ford cup 4 mm at 23 °C). Dip at room temperature for 1 hour, drained for 1 hour. Solvents evaporate at 80 °C for 3 hours. Harden at 125 °C for 16 hours. Vacuum application makes in 2 coats on winding. Harden at 125 °C after solvents evaporation.

### PACK SIZES

15 kg

190 kg

### APPLICATION



### VACUUM APPLICATION



# SIGNOCRYL T

## S 2856 | ROAD MARKING PAINT

### PRODUCT:

The solvent-based paint uses for road marking on asphalt and concrete surfaces. The product is listed in official catalogue of approved products issued by the Ministry of transport CR.

### SURFACE PREPARATION:

The surface has to be cleaned and dried, free of grease and impurities.

### THINNER P 6406

### RECOMMENDED APPLICATION:

Apply 1 coat by conventional or airless spraying, other technique using masking template. The paint is ready to use for application machine. It can be thinned by P 6406 in case of need. Mix properly the paint before use and mix it regularly in machine tanks. It dries on air by evaporating of solvents at min 5 °C, humidity max 75 % for 7 min. Optimal wet film thickness is 500 µm (680 g/m<sup>2</sup>), dried coat is 220 µm. Balottini Swarco T 14 G20 adds in amount 300 - 350 g/m<sup>2</sup> immediately for retroflex and roughness. The paint can be passing away at 20 ± 1 °C, humidity 75 %, after 30 min. The lower is temperature and the higher is humidity, the slower is drying. Water mustn't get into the product during handling, it spoils the paint.

### PACK SIZES

4 l

18 l

### COVERAGE (m<sup>2</sup>/l)

2

### USE

### EXTERIOR

### APPLICATION



0100  
white

0620  
yellow



# AMARIT

# MODRÝ

## A. BS | SHIELDING PAINT



blue



### PACK SIZES

1 kg

5 kg

20 kg

### COVERAGE (m<sup>2</sup>/ kg)

up to 40

### USE

INTERIOR

EXTERIOR

### APPLICATION



### PRODUCT:

The water based paint uses for glass houses and hotbeds shielding against burning effect of direct sunlight.

### RECOMMENDED APPLICATION:

Mix properly before use. Thin the paint in ratio 1 part of it to 1 to max 2 parts of water and mix together. The paint is ready to use and mix it periodically to avoid sedimentation and process it till 24 hours. Apply 1 - 2 coats by brush or spray. Fresh coat protects against rain for 24 hours. Dry coat resists to rain, it can be removed mechanically (a brush and hot water). Life of the coating on glass is one year. The temperature of the surface must be at least 5 °C.

# REMAKOL

## V 3502 | TINTING PASTE



### PACK SIZES

0,25 kg

### USE

INTERIOR

### PRODUCT:

The water-based paste uses for tinting of interior wall and latex paints in interior. The shades: 0197, 0264, 0274, 0284, 0482, 0684 and 0847 can be used for tinting of acrylic and silicone façade paints.

### RECOMMENDED APPLICATION:

Thin the paste by water, add into a paint and mix properly. The colour of dry paint is lighter than the liquid mixture.

0102 white



0197 black



0264 medium brown



0274 chestnut



0284 deep brown



0482 blue



0550 green



0622 yellow



0632 yolky



0684 ocher



0816 light red



0833 red



0847 redbrown





# FRONTON

# PRÁŠKOVÁ BARVA

## F. PB | POWDER PAINT

### PRODUCT:

The pigment powder uses for tinting paints, concrete and other building materials, both exterior and interior. Colour shades are fade resistant.

### SURFACE PREPARATION

The surface has to be cleaned, dried, aged, solid and rough. Remove multiple lime paints by scraper while wet. Plasters covered by oil paints aren't suitable.

### RECOMMENDED APPLICATION:

Tint the paint by FRONTON and properly mix. Apply by brush. Recoat after 2 - 5 hours.

**Pastel shades:** Add 5 Kg of FRONTON into 3 L of water and properly mix. The mixture add into 50 L of the paint after 2 - 3 hours.

**Deep shades:** Add 10 Kg of FRONTON into 3 L of water and properly mix. The mixture add into 50 L of the paint after 2 - 3 hours.

The temperature has to be above 5 °C. Don't apply in strong sunshine.

### PACK SIZES

0,8 kg

4 kg

USE

INTERIOR

EXTERIOR



0100 white	0191 grey	0199 black
0261 medium brown	0271 chestnut brown	0281 deep brown
0610 light yellow	0452 signal blue	0551 deep green
0651 yellow	0664 ocher	0731 brick red
0847 deep red		





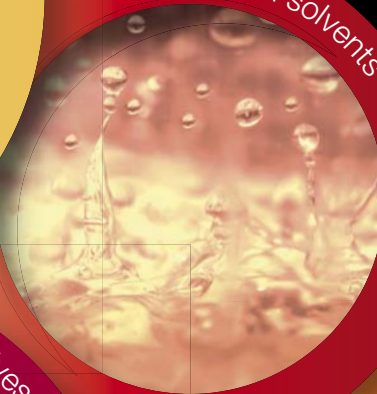


**BARVY A LAKY  
TELURIA®**

special paints



thinners and solvents



adhesives



coatings on concrete



BARVY A LAKY TELURIA, s.r.o.  
Skrchov 1, 679 61 Letovice  
Česká republika  
Tel.: (+420) 516 474 211-2  
fax: (+420) 516 474 257

[www.teluria.cz](http://www.teluria.cz)